



*Office of Information, Analysis and Planning — November 2014*

# 2014–15 FACT BOOK



## Table of Contents

<b>STUDENTS</b> .....	<b>1</b>
Fall Enrollment Trends .....	1
Fall Enrollment by Gender.....	2
Fall Enrollment by Ethnicity .....	3
Fall Enrollment Percentages .....	5
Fall Enrollment by Primary Major.....	6
Fall Enrollment by Residence .....	10
Fall Enrollment by Age Category .....	10
Fall Enrollment by State of Origin.....	11
International Students .....	12
First Generation College Students from Entering Freshman Class .....	12
Programs Offered.....	13
Degrees Granted by Department and Major .....	14
Admissions.....	16
Average SAT Scores for First-time Full-time Freshmen.....	16
Undergraduate Retention of First-time Full-time Freshmen .....	17
Graduation Rates for First-time Full-time Freshmen .....	18
Student Credit Hours by Department and Subject.....	19
Student Development .....	22
Leadership Institute .....	23
University College Programs and Services.....	23
Civic Engagement.....	24
Career Placement of 2013 Graduates .....	25
Athletics.....	26
<b>FACULTY AND STAFF</b> .....	<b>27</b>
Staff by Category and Gender.....	27
Faculty by Gender and Tenure Status .....	28
Part-time Faculty .....	29
Full-time Faculty by Department.....	29
Full-time Faculty Degrees.....	30
Faculty and Staff by Ethnicity .....	31

<b>ORGANIZATIONAL CHARTS.....</b>	<b>32</b>
Administrative .....	32
Finance and Support Operations .....	33
Provost .....	34
Enrollment Services.....	35
Information Technology Services .....	36
Library.....	37
Advancement .....	38
Student Affairs .....	39
Marketing/Communications .....	44
<b>FINANCES.....</b>	<b>45</b>
Statement of Activities.....	45
Endowment and Other Long-Term Investments .....	46
Tuition, Fees, Room and Board Charges .....	47
Tuition Comparison, Wilkes and Other Institutions.....	49
Student Financial Aid.....	50
Wilkes Alumni .....	51
Alumni by Graduation Year .....	51
Alumni Giving.....	51
Funds Raised .....	52
<b>FACILITIES .....</b>	<b>53</b>
Building Inventory – Assignable Square Footage .....	53
Eugene S. Farley Library .....	55
Computing Inventory .....	56
<b>ACCREDITATIONS.....</b>	<b>56</b>
<b>GLOSSARY.....</b>	<b>57</b>

# STUDENTS

## *Fall Enrollment Trends*

As of official census date

	<u>2010</u>	<u>2011</u>	<u>2012</u>	<u>2013</u>	<u>2014</u>
<b>Undergraduate</b>					
Full-time	1,968	2,023	2,095	2,181	2,217
Part-time	216	188	207	207	143
<b>Total</b>	<b>2,184</b>	<b>2,211</b>	<b>2,302</b>	<b>2,388</b>	<b>2,360</b>
FTE	2,033	2,089	2,165	2,251	2,273
<b>Graduate</b>					
Full-time	231	248	183	201	197
Part-time	3,232	2,425	2,260	1,788	1,716
<b>Total</b>	<b>3,463</b>	<b>2,673</b>	<b>2,443</b>	<b>1,989</b>	<b>1,913</b>
FTE	1,704	1,332	1,221	1,011	973
<b>First-Professional</b>					
Full-time	278	276	285	288	288
Part-time	1	3	0	0	1
<b>Total</b>	<b>279</b>	<b>279</b>	<b>285</b>	<b>288</b>	<b>289</b>
FTE	278	277	285	288	288
<b>Total</b>					
Full-time	2,477	2,547	2,563	2,670	2,702
Part-time	3,449	2,616	2,467	1,995	1,860
<b>Total</b>	<b>5,926</b>	<b>5,163</b>	<b>5,030</b>	<b>4,665</b>	<b>4,562</b>
FTE	4,015	3,697	3,671	3,550	3,534

## **Fall Enrollment by Gender**

As of official census date

	<u>2010</u>	<u>2011</u>	<u>2012</u>	<u>2013</u>	<u>2014</u>
<b>Undergraduate Students</b>					
Male Full-time	1,009	1,024	1,074	1,157	1,173
Female Full-time	<u>959</u>	<u>999</u>	<u>1,021</u>	<u>1,024</u>	<u>1,044</u>
Total	<u>1,968</u>	<u>2,023</u>	<u>2,095</u>	<u>2,181</u>	<u>2,217</u>
Male Part-time	115	96	110	105	69
Female Part-time	<u>101</u>	<u>92</u>	<u>97</u>	<u>102</u>	<u>74</u>
Total	<u>216</u>	<u>188</u>	<u>207</u>	<u>207</u>	<u>143</u>
<b>First Professional Students</b>					
Male Full-time	111	107	114	111	114
Female Full-time	<u>167</u>	<u>169</u>	<u>171</u>	<u>177</u>	<u>174</u>
Total	<u>278</u>	<u>276</u>	<u>285</u>	<u>288</u>	<u>288</u>
Male Part-time	0	1	0	0	0
Female Part-time	<u>1</u>	<u>2</u>	<u>0</u>	<u>0</u>	<u>1</u>
Total	<u>1</u>	<u>3</u>	<u>0</u>	<u>0</u>	<u>1</u>
<b>Graduate Students</b>					
Male Full-time	90	111	86	85	84
Female Full-time	<u>141</u>	<u>137</u>	<u>97</u>	<u>116</u>	<u>113</u>
Total	<u>231</u>	<u>248</u>	<u>183</u>	<u>201</u>	<u>197</u>
Male Part-time	927	696	648	512	506
Female Part-time	<u>2,305</u>	<u>1,729</u>	<u>1,612</u>	<u>1,276</u>	<u>1,210</u>
Total	<u>3,232</u>	<u>2,425</u>	<u>2,260</u>	<u>1,788</u>	<u>1,716</u>
<b>Total University</b>					
Male Full-time	1,210	1,242	1,274	1,353	1,371
Female Full-time	<u>1,267</u>	<u>1,305</u>	<u>1,289</u>	<u>1,317</u>	<u>1,331</u>
Total	<u>2,477</u>	<u>2,547</u>	<u>2,563</u>	<u>2,670</u>	<u>2,702</u>
Male Part-time	1,042	793	758	617	575
Female Part-time	<u>2,407</u>	<u>1,823</u>	<u>1,709</u>	<u>1,378</u>	<u>1,285</u>
Total	<u>3,449</u>	<u>2,616</u>	<u>2,467</u>	<u>1,995</u>	<u>1,860</u>

## Fall Enrollment by Ethnicity

As of official census date

	<u>2010</u>	<u>2011</u>	<u>2012</u>	<u>2013</u>	<u>2014</u>
<b>Undergraduate Students</b>					
<b>Full-time</b>					
White	1,548	1,555	1,679	1,679	1,627
American Indian/Alaskan	2	3	2	4	3
Asian	45	50	53	59	48
Black	66	71	77	73	68
Hawaiian/Pacific Island.	1	0	1	3	3
Hispanic	51	63	75	99	132
Non-Resident Alien	53	56	101	163	196
Two or more races	29	44	58	56	94
Unidentified	173	181	49	45	46
Total Full-time	<u>1,968</u>	<u>2,023</u>	<u>2,095</u>	<u>2,181</u>	<u>2,217</u>
<b>Part-time</b>					
White	86	102	120	148	104
American Indian/Alaskan	0	0	0	0	0
Asian	2	1	5	6	6
Black	5	2	4	8	4
Hawaiian/Pacific Island.	0	0	0	0	0
Hispanic	5	8	8	6	6
Non-Resident Alien	7	3	5	1	5
Two or more races	4	5	4	4	3
Unidentified	107	67	61	34	15
Total Part-time	<u>216</u>	<u>188</u>	<u>207</u>	<u>207</u>	<u>143</u>
<b>First-Professional Students</b>					
<b>Full-time</b>					
White	264	260	264	258	258
American Indian/Alaskan	0	0	0	0	0
Asian	4	7	8	9	9
Black	2	1	2	2	4
Hawaiian/Pacific Island.	0	0	0	0	0
Hispanic	1	1	3	3	4
Non-Resident Alien	1	1	1	1	1
Two or more races	2	2	5	10	8
Unidentified	4	4	2	5	4
Total Full-time	<u>278</u>	<u>276</u>	<u>285</u>	<u>288</u>	<u>288</u>
<b>Part-time</b>					
White	0	1	0	0	1
American Indian/Alaskan	0	0	0	0	0
Asian	0	0	0	0	0
Black	0	1	0	0	0
Hawaiian/Pacific Island.	0	0	0	0	0
Hispanic	0	0	0	0	0
Non-Resident Alien	1	1	0	0	0
Two or more races	0	0	0	0	0
Unidentified	0	0	0	0	0
Total Part-time	<u>1</u>	<u>3</u>	<u>0</u>	<u>0</u>	<u>1</u>

(Continued on following page)

**Fall Enrollment by Ethnicity (continued)**

	<u>2010</u>	<u>2011</u>	<u>2012</u>	<u>2013</u>	<u>2014</u>
<b>Graduate Students</b>					
<b>Full-time</b>					
White	166	151	127	128	138
American Indian/Alaskan	0	0	0	0	0
Asian	4	7	3	5	5
Black	10	13	8	9	8
Hawaiian/Pacific Island.	1	1	0	0	1
Hispanic	6	3	1	8	4
Non-Resident Alien	24	31	32	31	30
Two or more races	2	2	1	10	4
Unidentified	18	40	11	10	7
Total Full-time	<u>231</u>	<u>248</u>	<u>183</u>	<u>201</u>	<u>197</u>
<b>Part-time</b>					
White	2,799	2,113	2,006	1,598	1,512
American Indian/Alaskan	2	1	3	3	2
Asian	20	19	21	15	17
Black	24	32	40	34	31
Hawaiian/Pacific Island.	1	0	0	2	2
Hispanic	33	36	35	41	36
Non-Resident Alien	15	3	1	4	4
Two or more races	6	23	22	16	29
Unidentified	509	198	132	75	83
Total Part-time	<u>3,232</u>	<u>2,425</u>	<u>2,260</u>	<u>1,788</u>	<u>1,716</u>
<b>Total University</b>					
<b>Full-time</b>					
White	1,978	1,966	2,070	2,065	2,023
American Indian/Alaskan	4	3	2	4	3
Asian	53	64	64	73	62
Black	78	85	87	84	80
Hawaiian/Pacific Island.	2	1	1	3	4
Hispanic	58	67	79	110	140
Non-Resident Alien	78	88	134	195	227
Two or more races	33	48	64	76	106
Unidentified	195	225	62	60	57
Total Full-time	<u>2,477</u>	<u>2,547</u>	<u>2,563</u>	<u>2,670</u>	<u>2,702</u>
<b>Part-time</b>					
White	2,885	2,216	2,126	1,746	1,617
American Indian/Alaskan	2	1	3	3	2
Asian	22	20	26	21	23
Black	29	35	44	42	35
Hawaiian/Pacific Island.	1	0	0	2	2
Hispanic	38	44	43	47	42
Non-Resident Alien	17	7	6	5	9
Two or more races	30	28	26	20	32
Unidentified	427	265	193	109	98
Total Part-time	<u>3,449</u>	<u>2,616</u>	<u>2,467</u>	<u>1,995</u>	<u>1,860</u>

## Fall Enrollment Percentages

### Status

	Undergraduate	First Professional	Graduate	Total
Full-time	93.9%	99.7%	10.3%	59.2%
Part-time	6.1%	0.3%	89.7%	40.8%
<b>Full-time</b>				
White	73.4%	89.6%	70.1%	74.9%
American Indian/Alaskan	0.1%	0.0%	0.0%	0.1%
Asian	2.2%	3.1%	2.5%	2.3%
Black	3.1%	1.4%	4.1%	3.0%
Hawaiian/Pacific Islander	0.1%	0.0%	0.5%	0.1%
Hispanic	6.0%	1.4%	2.0%	5.2%
Non-Resident Alien	8.8%	0.3%	15.2%	8.4%
Two or more races	4.2%	2.8%	2.0%	3.9%
Unidentified	2.1%	1.4%	3.6%	2.1%
<b>Part-time</b>				
White	72.7%	100.0%	88.1%	86.9%
American Indian/Alaskan	0.0%	0.0%	0.1%	0.1%
Asian	4.2%	0.0%	1.0%	1.2%
Black	2.8%	0.0%	1.8%	1.9%
Hawaiian/Pacific Islander	0.0%	0.0%	0.1%	0.1%
Hispanic	4.2%	0.0%	2.1%	2.3%
Non-Resident Alien	3.5%	0.0%	0.2%	0.5%
Two or more races	2.1%	0.0%	1.7%	1.7%
Unidentified	10.5%	0.0%	4.8%	5.3%
<b>Total</b>				
White	73.3%	89.6%	86.3%	79.8%
American Indian/Alaskan	0.1%	0.0%	0.1%	0.1%
Asian	2.3%	3.1%	1.2%	1.9%
Black	3.1%	1.4%	2.0%	2.5%
Hawaiian/Pacific Islander	0.1%	0.0%	0.2%	0.1%
Hispanic	5.8%	1.4%	2.1%	4.0%
Non-Resident Alien	8.5%	0.3%	1.8%	5.2%
Two or more races	4.1%	2.8%	1.7%	3.0%
Unidentified	2.6%	1.4%	4.7%	3.4%

### Gender

	Undergraduate	First Professional	Graduate	Total
<b>Full-time</b>				
Male	52.9%	39.6%	42.6%	50.7%
Female	47.1%	60.4%	57.4%	49.3%
<b>Part-time</b>				
Male	48.3%	0.0%	29.5%	30.9%
Female	51.7%	100.0%	70.5%	69.1%
<b>Total</b>				
Male	52.6%	39.4%	30.8%	42.7%
Female	47.4%	60.6%	69.2%	57.3%



## Fall Enrollment by Primary Major

As of official census date

### Full-time Undergraduate

	Fall 2010	Fall 2011	Fall 2012	Fall 2013	Fall 2014
<b>Division of Biology &amp; Health Sciences</b>	<b>121</b>	<b>149</b>	<b>139</b>	<b>165</b>	<b>166</b>
Biology	116	141	123	151	155
Medical Laboratory Sciences	5	8	16	14	11
<b>Department of Chemistry</b>	<b>33</b>	<b>41</b>	<b>37</b>	<b>36</b>	<b>31</b>
Biochemistry	16	15	14	12	11
Chemistry	17	26	23	24	20
<b>Department of Finance, Accounting &amp; Management</b>	<b>235</b>	<b>217</b>	<b>209</b>	<b>233</b>	<b>256</b>
Accounting	68	72	78	89	86
Business Administration	167	145	98	49	33
Finance	-	-	7	19	41
Management	-	-	26	76	81
Sports Event Management	-	-	-	-	15
<b>Dept. of Entrepreneurship, Leadership &amp; Marketing</b>	<b>32</b>	<b>22</b>	<b>48</b>	<b>65</b>	<b>76</b>
Entrepreneurship	32	22	33	29	29
Marketing	-	-	15	36	47
<b>Department of Communication Studies</b>	<b>85</b>	<b>77</b>	<b>73</b>	<b>67</b>	<b>63</b>
Communication Studies	85	77	73	67	63
<b>Department of Education</b>	<b>124</b>	<b>121</b>	<b>90</b>	<b>81</b>	<b>75</b>
Elementary & Early Childhood Education	1	3	14	19	20
Elementary Education	52	41	20	-	-
Middle School Education	1	6	11	10	8
Pre-Elementary Education	54	46	29	40	40
Pre-Middle School Education	16	25	16	12	7
<b>Electrical Engineering, Bioengineering &amp; Physics Dept.</b>	<b>55</b>	<b>47</b>	<b>59</b>	<b>86</b>	<b>88</b>
Electrical Engineering	55	47	59	83	85
Physics	-	-	-	3	3
<b>Mechanical Engineering &amp; Engineering Mgt Dept.</b>	<b>120</b>	<b>146</b>	<b>196</b>	<b>215</b>	<b>227</b>
Applied & Engineering Sciences	1	-	-	1	1
Engineering	15	21	52	44	34
Engineering Management	9	10	10	11	13
Mechanical Engineering	95	115	134	159	179
<b>Dept. of Environmental Engr. &amp; Earth Sciences</b>	<b>72</b>	<b>68</b>	<b>83</b>	<b>89</b>	<b>110</b>
Earth & Environmental Sciences	23	17	24	30	30
Environmental Engineering	49	51	59	59	80
<b>Division of Humanities</b>	<b>55</b>	<b>52</b>	<b>46</b>	<b>30</b>	<b>35</b>
English	53	50	44	29	33
Philosophy	2	2	2	1	2
<b>Division of Global History &amp; Languages</b>	<b>64</b>	<b>56</b>	<b>48</b>	<b>26</b>	<b>28</b>
History	57	48	44	20	21
Spanish	7	8	4	6	7

(Continued on following page)

## Fall Enrollment by Primary Major (continued)

### Full-time Undergraduate

	Fall 2010	Fall 2011	Fall 2012	Fall 2013	Fall 2014
<b>Integrative Media and Art Department</b>	<b>32</b>	<b>44</b>	<b>45</b>	<b>52</b>	<b>46</b>
Integrative Media	32	44	45	52	46
<b>Department of Math &amp; Computer Science</b>	<b>68</b>	<b>64</b>	<b>71</b>	<b>74</b>	<b>74</b>
Computer Info Systems	9	7	7	6	11
Computer Science	30	33	36	42	40
Mathematics	29	24	28	26	23
<b>School of Nursing</b>	<b>225</b>	<b>257</b>	<b>294</b>	<b>275</b>	<b>269</b>
<b>School of Pharmacy</b>	<b>137</b>	<b>132</b>	<b>134</b>	<b>141</b>	<b>145</b>
Pre-Pharmacy	130	130	131	141	145
Pharmaceutical Sciences	7	2	3	-	-
<b>Division of Behavioral and Social Sciences</b>	<b>262</b>	<b>273</b>	<b>280</b>	<b>289</b>	<b>290</b>
Criminology	91	104	106	107	90
International Studies	8	11	12	8	9
Political Science	36	34	27	29	27
Psychology	112	110	125	136	155
Sociology	15	14	10	9	9
<b>Division of Performing Arts</b>	<b>15</b>	<b>13</b>	<b>18</b>	<b>17</b>	<b>20</b>
Musical Theatre	7	5	9	7	9
Theatre Arts	8	8	9	10	11
<b>Individualized Studies</b>	<b>-</b>	<b>-</b>	<b>-</b>	<b>-</b>	<b>1</b>
<b>Undeclared</b>	<b>233</b>	<b>244</b>	<b>225</b>	<b>240</b>	<b>217</b>
<b>Total</b>	<b>1,968</b>	<b>2,023</b>	<b>2,095</b>	<b>2,181</b>	<b>2,217</b>

### Full-time Graduate

	Fall 2010	Fall 2011	Fall 2012	Fall 2013	Fall 2014
<b>Dept of Finance, Accounting &amp; Management</b>	<b>39</b>	<b>48</b>	<b>29</b>	<b>41</b>	<b>46</b>
Business Administration	39	48	29	41	46
<b>Graduate Teacher Education</b>	<b>73</b>	<b>92</b>	<b>51</b>	<b>46</b>	<b>47</b>
<b>Electrical Engr., Bioengineering &amp; Physics Dept</b>	<b>5</b>	<b>5</b>	<b>2</b>	<b>12</b>	<b>18</b>
Bioengineering	-	-	-	9	10
Electrical Engineering	5	5	2	3	8
<b>Mechanical Engineering &amp; Engineering Mgt Dept</b>	<b>8</b>	<b>22</b>	<b>28</b>	<b>19</b>	<b>14</b>
Engineering Management	6	18	20	10	6
Mechanical Engineering	2	4	8	9	8
<b>Creative Writing</b>	<b>81</b>	<b>72</b>	<b>66</b>	<b>71</b>	<b>58</b>
<b>Department of Math &amp; Computer Science</b>	<b>1</b>	<b>-</b>	<b>1</b>	<b>2</b>	<b>1</b>
Mathematics	1	-	-	2	1
<b>School of Nursing</b>	<b>20</b>	<b>5</b>	<b>-</b>	<b>7</b>	<b>11</b>
<b>Undeclared</b>	<b>4</b>	<b>4</b>	<b>6</b>	<b>3</b>	<b>2</b>
<b>Total</b>	<b>231</b>	<b>248</b>	<b>183</b>	<b>201</b>	<b>197</b>

### Full-time First-Professional

	Fall 2010	Fall 2011	Fall 2012	Fall 2013	Fall 2014
<b>School of Pharmacy</b>	<b>278</b>	<b>276</b>	<b>285</b>	<b>288</b>	<b>288</b>

(Continued on following page)

## Fall Enrollment by Primary Major (continued)

### Part-time Undergraduate

	Fall 2010	Fall 2011	Fall 2012	Fall 2013	Fall 2014
<b>Division of Biology &amp; Health Sciences</b>	<b>3</b>	<b>5</b>	<b>5</b>	<b>5</b>	<b>6</b>
Biology	3	4	4	5	6
Medical Laboratory Sciences	-	1	1	-	-
<b>Department of Chemistry</b>	<b>1</b>	<b>4</b>	<b>1</b>	<b>2</b>	<b>2</b>
Biochemistry	-	1	-	-	-
Chemistry	1	3	1	2	2
<b>Dept of Finance, Accounting and Management</b>	<b>28</b>	<b>32</b>	<b>33</b>	<b>28</b>	<b>28</b>
Accounting	5	3	3	2	3
Business Administration	23	29	28	21	20
Finance	-	-	1	1	-
Management	-	-	1	4	4
Sports & Event Management	-	-	-	-	1
<b>Dept. of Entrepreneurship, Leadership &amp; Marketing</b>	<b>2</b>	<b>-</b>	<b>-</b>	<b>2</b>	<b>3</b>
Entrepreneurship	2	-	-	2	2
Marketing	-	-	-	-	1
<b>Department of Communication Studies</b>	<b>2</b>	<b>2</b>	<b>2</b>	<b>3</b>	<b>-</b>
Communication Studies	2	2	2	3	-
<b>Department of Education</b>	<b>3</b>	<b>4</b>	<b>5</b>	<b>5</b>	<b>-</b>
Education	-	1	-	-	-
Elementary Education	1	3	1	1	-
Pre-Elementary Education	-	-	3	2	-
Pre-Middle School Education	2	-	1	1	-
<b>Electrical Engineering, Bioengineering &amp; Physics Dept</b>	<b>3</b>	<b>5</b>	<b>5</b>	<b>1</b>	<b>1</b>
Electrical Engineering	3	5	5	1	1
<b>Mechanical Engineering &amp; Engineering Mgt Dept</b>	<b>2</b>	<b>3</b>	<b>6</b>	<b>5</b>	<b>7</b>
Applied & Engineering Sciences	-	-	-	-	-
Engineering	1	1	1	2	1
Engineering Management	-	-	-	1	-
Mechanical Engineering	1	2	5	2	6
<b>Dept. of Environmental Engr. &amp; Earth Sciences</b>	<b>5</b>	<b>3</b>	<b>3</b>	<b>2</b>	<b>3</b>
Earth & Environmental Sciences	2	1	2	1	-
Environmental Engineering	3	2	1	1	3
<b>Division of Humanities</b>	<b>4</b>	<b>4</b>	<b>3</b>	<b>5</b>	<b>1</b>
English	4	4	3	5	1
Philosophy	-	-	-	-	-
<b>Department of Global History &amp; Foreign Languages</b>	<b>2</b>	<b>4</b>	<b>5</b>	<b>4</b>	<b>2</b>
History	2	4	5	2	2
Spanish	-	-	-	2	-
<b>Integrative Media Department</b>	<b>1</b>	<b>3</b>	<b>4</b>	<b>4</b>	<b>1</b>
Integrative Media	1	3	4	4	1
<b>Department of Math &amp; Computer Science</b>	<b>5</b>	<b>7</b>	<b>5</b>	<b>6</b>	<b>9</b>
Computer Info Systems	-	2	-	-	1
Computer Science	2	2	2	3	5
Mathematics	3	3	3	3	3
<b>School of Nursing</b>	<b>8</b>	<b>15</b>	<b>9</b>	<b>13</b>	<b>20</b>
<b>School of Pharmacy</b>	<b>1</b>	<b>-</b>	<b>1</b>	<b>-</b>	<b>-</b>
Pre-Pharmacy	1	-	1	-	-
Pharmaceutical Science	-	-	-	-	-

(Continued on following page)

## Fall Enrollment by Primary Major (continued)

### Part-time Undergraduate

	Fall 2010	Fall 2011	Fall 2012	Fall 2013	Fall 2014
<b>Division of Behavioral and Social Sciences</b>	<b>10</b>	<b>9</b>	<b>3</b>	<b>9</b>	<b>12</b>
Criminology	1	2	1	3	3
International Studies	-	2	1	-	-
Political Science	1	-	-	-	1
Psychology	2	4	1	4	7
Sociology	6	1	-	2	1
<b>Division of Performing Arts</b>	<b>-</b>	<b>-</b>	<b>2</b>	<b>1</b>	<b>-</b>
Musical Theatre	-	-	1	-	-
Theatre Arts	-	-	1	1	-
<b>Individualized Studies</b>	<b>-</b>	<b>-</b>	<b>-</b>	<b>-</b>	<b>-</b>
<b>Undeclared</b>	<b>136</b>	<b>88</b>	<b>115</b>	<b>112</b>	<b>48</b>
<b>Total</b>	<b>216</b>	<b>188</b>	<b>207</b>	<b>207</b>	<b>143</b>

### Part-time Graduate

	Fall 2010	Fall 2011	Fall 2012	Fall 2013	Fall 2014
<b>Dept of Finance, Accounting &amp; Management</b>	<b>146</b>	<b>134</b>	<b>115</b>	<b>119</b>	<b>135</b>
Business Administration	146	134	115	119	135
<b>Graduate Teacher Education</b>	<b>2,741</b>	<b>2,005</b>	<b>1,824</b>	<b>1,410</b>	<b>1,330</b>
<b>Electrical Engineering, Bioengineering &amp; Physics Dept.</b>	<b>6</b>	<b>6</b>	<b>5</b>	<b>5</b>	<b>10</b>
Bioengineering	-	-	-	3	7
Electrical Engineering	6	6	5	2	3
<b>Mechanical Engineering &amp; Engineering Mgt Dept.</b>	<b>9</b>	<b>20</b>	<b>23</b>	<b>23</b>	<b>14</b>
Engineering Management	-	-	11	12	10
Engineering Operations & Strategy	9	9	-	-	-
Mechanical Engineering	-	11	12	11	4
<b>Creative Writing</b>	<b>18</b>	<b>17</b>	<b>28</b>	<b>14</b>	<b>25</b>
<b>Department of Environmental Engr. &amp; Earth Sci.</b>	<b>-</b>	<b>3</b>	<b>5</b>	<b>2</b>	<b>2</b>
Sustainability Management	-	3	5	2	2
<b>Department of Math &amp; Computer Science</b>	<b>3</b>	<b>4</b>	<b>-</b>	<b>-</b>	<b>-</b>
Mathematics	3	4	-	-	-
<b>School of Nursing</b>	<b>43</b>	<b>87</b>	<b>135</b>	<b>132</b>	<b>136</b>
<b>Undeclared</b>	<b>266</b>	<b>149</b>	<b>125</b>	<b>83</b>	<b>64</b>
<b>Total</b>	<b>3,232</b>	<b>2,425</b>	<b>2,260</b>	<b>1,788</b>	<b>1,716</b>

### Part-time First-Professional

	Fall 2010	Fall 2011	Fall 2012	Fall 2013	Fall 2014
<b>School of Pharmacy</b>	<b>1</b>	<b>3</b>	<b>-</b>	<b>-</b>	<b>1</b>

## ***Fall Enrollment by Residence***

### **Full-time Students**

	<u>Fall 2013</u>		<u>Fall 2014</u>	
<b>Residence Halls</b>				
First-time Freshmen	460	79%	382	69%
Undergraduate Students (including First-time Freshmen)	958	44%	943	43%
First-Professional Students	<u>48</u>	17%	<u>48</u>	17%
<b>Total</b>	<b>1,006</b>	<b>41%</b>	<b>991</b>	<b>40%</b>

### **Off-Campus**

First-time Freshmen	124	21%	175	31%
Undergraduate Students (including First-time Freshmen)	1,223	56%	1,274	57%
First-Professional Students	<u>240</u>	83%	<u>240</u>	83%
<b>Total</b>	<b>1,463</b>	<b>59%</b>	<b>1,514</b>	<b>60%</b>

### **Total Full-time**

First-time Freshmen	584	557
Undergraduate Students (including First-time Freshmen)	2,181	2,217
First-Professional Students	<u>288</u>	<u>288</u>
<b>Total</b>	<b>2,469</b>	<b>2,505</b>

## ***Fall Enrollment by Age Category***

### **Fall 2014 Enrollment**

	Full-time			Part-time			Total
	Undergraduate	First-Professional	Graduate	Undergraduate	First-Professional	Graduate	
<b>Under 18</b>	4	-	-	18	-	-	<b>22</b>
<b>18 - 19</b>	852	2	-	18	-	-	<b>872</b>
<b>20 - 21</b>	832	97	-	19	-	-	<b>948</b>
<b>22 - 24</b>	374	167	57	30	1	98	<b>727</b>
<b>25 - 29</b>	109	16	56	23	-	602	<b>806</b>
<b>30 - 34</b>	26	3	34	7	-	323	<b>393</b>
<b>35 - 39</b>	15	1	16	6	-	206	<b>244</b>
<b>40 - 49</b>	3	2	15	17	-	312	<b>349</b>
<b>50 - 64</b>	2	-	17	3	-	167	<b>189</b>
<b>65 &amp; Over</b>	-	-	2	1	-	7	<b>10</b>
<b>Age unknown</b>	-	-	-	1	-	1	<b>2</b>
<b>Total</b>	<b>2,217</b>	<b>288</b>	<b>197</b>	<b>143</b>	<b>1</b>	<b>1,716</b>	<b>4,562</b>

## Fall Enrollment by State of Origin

### Fall 2014 Enrollment

	Full-time			Part-time			Total
	Undergraduate	First- Professional	Graduate	Undergraduate	First- Professional	Graduate	
Alabama	-	-	1	-	-	-	1
Arizona	-	-	8	-	-	39	47
Arkansas	-	-	1	-	-	1	2
California	2	-	1	-	-	19	22
Colorado	1	-	-	-	-	3	4
Connecticut	4	3	3	-	-	9	19
DC	-	-	1	-	-	1	2
Delaware	2	-	-	-	-	4	6
Florida	1	-	6	-	-	9	16
Georgia	-	-	1	-	-	3	4
Hawaii	1	-	-	-	-	-	1
Illinois	1	-	-	-	-	5	6
Indiana	1	1	1	-	-	2	5
Iowa	-	-	-	-	-	1	1
Louisiana	-	-	1	-	-	-	1
Maine	2	-	-	-	-	2	4
Maryland	16	3	1	2	-	6	28
Massachusetts	3	-	-	-	-	2	5
Michigan	-	-	3	1	-	1	5
Missouri	-	-	-	-	-	2	2
Nebraska	-	-	1	-	-	-	1
Nevada	-	-	2	-	-	1	3
New Hampshire	2	-	-	-	-	-	2
New Jersey	194	15	5	5	-	38	257
New Mexico	-	-	-	-	-	1	1
New York	103	35	6	1	1	12	158
North Carolina	2	-	1	-	-	4	7
Ohio	1	-	1	-	-	7	9
Oregon	-	-	1	-	-	1	2
Pennsylvania	1,677	230	112	129	-	1,451	3,599
Rhode Island	1	-	-	-	-	1	2
South Carolina	-	-	1	-	-	4	5
South Dakota	-	-	1	-	-	-	1
Tennessee	2	-	1	-	-	2	5
Texas	-	-	1	-	-	9	10
Utah	-	-	1	-	-	-	1
Vermont	-	-	1	-	-	-	1
Virginia	3	-	2	-	-	13	18
Washington	1	-	-	-	-	6	7
West Virginia	-	-	-	-	-	2	2
Canada	1	-	-	-	-	30	31
Foreign Country	196	1	32	5	-	25	259
<b>Total</b>	<b>2,217</b>	<b>288</b>	<b>197</b>	<b>143</b>	<b>1</b>	<b>1,716</b>	<b>4,562</b>
<b>In State</b>	<b>75.6%</b>	<b>79.9%</b>	<b>56.9%</b>	<b>90.2%</b>	<b>0.0%</b>	<b>84.6%</b>	<b>78.9%</b>
<b>Out of State</b>	<b>15.5%</b>	<b>19.8%</b>	<b>26.9%</b>	<b>6.3%</b>	<b>100.0%</b>	<b>12.2%</b>	<b>14.8%</b>
<b>Foreign</b>	<b>8.9%</b>	<b>0.3%</b>	<b>16.2%</b>	<b>3.5%</b>	<b>0.0%</b>	<b>3.2%</b>	<b>6.4%</b>

## ***International Students***

### **Fall 2014 Enrollment By Country of Origin**

	Undergraduate		First- Professional	Graduate		Total		Total
	International (NRA)	International (NRA)	International (NRA)	International (NRA)	International (Other)	International (NRA)	International (Other)	
Australia	-	-	-	-	1	-	1	1
Bahamas	1	-	-	-	-	1	-	1
Bangladesh	-	-	-	1	-	1	-	1
Canada	-	1	-	-	30	-	31	31
China	16	-	-	4	-	20	-	20
Egypt	-	-	-	-	1	-	1	1
Greece	1	-	-	-	-	1	-	1
India	1	-	-	9	3	10	3	13
Iran	-	-	-	1	-	1	-	1
Ireland	-	-	-	1	-	1	-	1
Kuwait	20	-	-	-	-	20	-	20
Libya	1	-	-	-	-	1	-	1
Malawi	1	-	-	-	-	1	-	1
Malaysia	-	-	-	-	1	-	1	1
Mexico	-	-	-	-	1	-	1	1
Oman	-	-	-	-	12	-	12	12
Saudi Arabia	152	-	-	18	-	170	-	170
S Korea	-	-	1	-	-	1	-	1
Thailand	1	-	-	-	-	1	-	1
Turkey	-	-	-	-	4	-	4	4
UAE	7	-	-	-	-	7	-	7
<b>Total</b>	<b>201</b>	<b>1</b>	<b>1</b>	<b>34</b>	<b>53</b>	<b>236</b>	<b>54</b>	<b>290</b>

### ***First Generation College Students from Entering Freshman Class\****

<u>2010</u>	<u>2011</u>	<u>2012</u>	<u>2013</u>	<u>2014</u>
49.2%	51.8%	48.8%	54.3%	52.8%

*\*A first generation student is defined as a student for whom neither parent graduated from a 4-year institution. The data is from a survey administered to incoming freshmen by University College.*

## **Programs Offered**

### **Undergraduate**

BA	Biology	BBA	Business Administration
BA	Chemistry	BBA	Entrepreneurship
BA	Communication Studies	BBA	Finance
BA	Computer Science	BBA	Marketing
BA	Criminology	BBA	Management
BA	Earth & Environmental Sciences	BBA	Sports & Event Management
BA	Elem. & Early Childhood Education	BS	Applied & Engineering Sciences
BA	English	BS	Accounting
BA	History	BS	Biochemistry
BA	Individualized Studies	BS	Biology
BA	Integrative Media	BS	Chemistry
BA	International Studies	BS	Computer Information Systems
BA	Mathematics	BS	Computer Science
BA	Middle Level Education	BS	Earth & Environmental Sciences
BA	Musical Theatre	BS	Electrical Engineering
BA	Philosophy	BS	Engineering Management
BA	Physics	BS	Environmental Engineering
BA	Political Science	BS	Individualized Studies
BA	Psychology	BS	Mathematics
BA	Sociology	BS	Mechanical Engineering
BA	Spanish	BS	Medical Laboratory Sciences
BA	Theatre Arts	BS	Nursing

### **Graduate**

MA	Creative Writing		
MBA	Business Administration		
MFA	Creative Writing		
MS	Education	<b>Doctoral</b>	
MS	Bioengineering	EDD	Educational Leadership
MS	Electrical Engineering		
MS	Engineering Management	<b>Doctoral</b>	<b>Professional Practice</b>
MS	Mathematics	DPH	Pharmacy
MS	Mechanical Engineering	DNP	Nursing Practice
MS	Nursing		

Source: Registrar



## Degrees Granted by Department and Major Bachelor's Degrees

Department	2009-10	2010-11	2011-12	2012-13	2013-14
<b>Division of Biology &amp; Health Sciences</b>	<b>30</b>	<b>21</b>	<b>21</b>	<b>19</b>	<b>27</b>
Biology	29	21	21	18	27
Medical Laboratory Sciences	1	-	-	1	-
<b>Department of Chemistry</b>	<b>7</b>	<b>2</b>	<b>6</b>	<b>6</b>	<b>4</b>
Biochemistry	3	-	2	2	1
Chemistry	4	2	4	4	3
<b>Department of Finance, Accounting &amp; Management</b>	<b>61</b>	<b>77</b>	<b>78</b>	<b>63</b>	<b>59</b>
Accounting	17	18	20	18	21
Business Administration	44	59	58	32	18
Finance	-	-	-	3	3
Management	-	-	-	10	17
<b>Dept. of Entrepreneurship, Leadership &amp; Marketing</b>	<b>8</b>	<b>9</b>	<b>9</b>	<b>8</b>	<b>18</b>
Entrepreneurship	8	9	9	6	10
Marketing	-	-	-	2	8
<b>Department of Communication Studies</b>	<b>27</b>	<b>32</b>	<b>18</b>	<b>24</b>	<b>20</b>
<b>Integrative Media and Art Department</b>	<b>10</b>	<b>6</b>	<b>10</b>	<b>7</b>	<b>13</b>
Integrative Media	10	6	10	7	13
<b>Department of Education</b>	<b>16</b>	<b>30</b>	<b>24</b>	<b>27</b>	<b>17</b>
Elementary Education	16	28	23	21	2
Early Childhood Education	-	1	-	-	9
Middle Level Education	-	1	1	6	6
<b>Electrical Engineering, Bioengineering &amp; Physics Dept</b>	<b>6</b>	<b>17</b>	<b>7</b>	<b>11</b>	<b>11</b>
Electrical Engineering	6	17	7	11	11
<b>Mechanical Engineering &amp; Engineering Management Dept</b>	<b>18</b>	<b>19</b>	<b>22</b>	<b>27</b>	<b>28</b>
Applied & Engineering Sciences	-	-	-	2	-
Engineering Management	1	1	2	1	3
Mechanical Engineering	17	18	20	24	25
<b>Department of Environmental Engineering &amp; Earth Sciences</b>	<b>10</b>	<b>24</b>	<b>13</b>	<b>18</b>	<b>12</b>
Earth & Environmental Sciences	5	9	6	5	6
Environmental Engineering	5	15	7	13	6
<b>Division of Humanities</b>	<b>28</b>	<b>11</b>	<b>16</b>	<b>15</b>	<b>15</b>
English	25	10	15	15	14
Philosophy	3	1	1	-	1
<b>Department of Global History &amp; Foreign Languages</b>	<b>18</b>	<b>25</b>	<b>22</b>	<b>21</b>	<b>11</b>
History	17	20	14	18	8
Spanish	1	5	8	3	3
<b>Department of Math &amp; Computer Science</b>	<b>15</b>	<b>9</b>	<b>17</b>	<b>16</b>	<b>12</b>
Computer Information Systems	8	2	4	3	-
Computer Science	1	1	5	6	6
Mathematics	6	6	8	7	6
<b>Department of Pharmaceutical Sciences</b>	<b>3</b>	<b>3</b>	<b>-</b>	<b>3</b>	<b>-</b>
<b>School of Nursing</b>	<b>56</b>	<b>49</b>	<b>37</b>	<b>65</b>	<b>68</b>

(Continued on following page)

## Degrees Granted by Department and Major (continued)

### Bachelor's Degrees

Department	2009-10	2010-11	2011-12	2012-13	2013-14
<b>Division of Behavioral and Social Sciences</b>	<b>81</b>	<b>58</b>	<b>73</b>	<b>67</b>	<b>72</b>
Criminology	22	11	16	24	27
International Studies	2	-	3	3	1
Political Science	11	8	11	6	6
Psychology	36	32	34	29	34
Sociology	10	7	9	5	4
<b>Division of Performing Arts</b>	<b>5</b>	<b>6</b>	<b>4</b>	<b>3</b>	<b>7</b>
Music Education	-	-	-	-	1
Musical Theatre	-	1	1	1	1
Theatre Arts	5	5	3	2	5
<b>Generic Bachelor of Science</b>	<b>57</b>	<b>64</b>	<b>69</b>	<b>62</b>	<b>69</b>
<b>Individualized Studies</b>	<b>-</b>	<b>-</b>	<b>-</b>	<b>-</b>	<b>-</b>
<b>Total</b>	<b>456</b>	<b>462</b>	<b>446</b>	<b>462</b>	<b>463</b>

### Master's Degrees

Department	2009-10	2010-11	2011-12	2012-13	2013-14
<b>Department of Finance, Accounting &amp; Management</b>	<b>85</b>	<b>69</b>	<b>50</b>	<b>55</b>	<b>62</b>
Business Administration	85	69	50	55	62
<b>Creative Writing</b>	<b>45</b>	<b>50</b>	<b>62</b>	<b>63</b>	<b>43</b>
<b>Graduate Teacher Education</b>	<b>1,073</b>	<b>1,150</b>	<b>1,145</b>	<b>852</b>	<b>750</b>
<b>Electrical Engineering, Bioengineering &amp; Physics Dept</b>	<b>16</b>	<b>3</b>	<b>5</b>	<b>6</b>	<b>2</b>
Electrical Engineering	16	3	5	6	2
<b>Mechanical Engineering &amp; Engineering Management Dept</b>	<b>9</b>	<b>8</b>	<b>5</b>	<b>17</b>	<b>21</b>
Engineering Management	-	6	5	13	10
Engineering Operations & Strategy	9	2	-	-	-
Mechanical Engineering	-	-	-	4	11
<b>Department of Math &amp; Computer Science</b>	<b>1</b>	<b>1</b>	<b>1</b>	<b>1</b>	<b>1</b>
Mathematics	1	1	1	1	1
<b>School of Nursing</b>	<b>16</b>	<b>19</b>	<b>30</b>	<b>3</b>	<b>16</b>
<b>Total</b>	<b>1,245</b>	<b>1,300</b>	<b>1,298</b>	<b>997</b>	<b>895</b>

### Doctoral Professional Practice

Department	2009-10	2010-11	2011-12	2012-13	2013-14
<b>School of Pharmacy</b>	<b>69</b>	<b>70</b>	<b>66</b>	<b>69</b>	<b>72</b>
<b>School of Nursing</b>	<b>-</b>	<b>-</b>	<b>-</b>	<b>14</b>	<b>31</b>
<b>Total</b>	<b>69</b>	<b>70</b>	<b>66</b>	<b>83</b>	<b>103</b>

### Doctoral Degrees

Department	2009-10	2010-11	2011-12	2012-13	2013-14
<b>Department of Education</b>	<b>-</b>	<b>3</b>	<b>7</b>	<b>10</b>	<b>18</b>

## Admissions

	<u>Fall 2010</u>	<u>Fall 2011</u>	<u>Fall 2012</u>	<u>Fall 2013</u>	<u>Fall 2014</u>
<b>Applied</b>	<b>2,951</b>	<b>3,275</b>	<b>3,440</b>	<b>3,656</b>	<b>3,198</b>
Freshman	2,485	2,811	2,998	3,120	2,812
Transfer	466	464	442	536	386
<b>Offered Admission</b>	<b>2,179</b>	<b>2,449</b>	<b>2,607</b>	<b>2,835</b>	<b>2,532</b>
Freshman	1,875	2,146	2,278	2,500	2,211
Transfer	304	303	329	335	321
<b>Offer Rate</b>	<b>73.8%</b>	<b>74.8%</b>	<b>75.8%</b>	<b>77.5%</b>	<b>79.2%</b>
Freshman	75.5%	76.3%	76.0%	80.1%	78.6%
Transfer	65.2%	65.3%	74.4%	62.5%	83.2%
<b>Enrolled*</b>	<b>654</b>	<b>719</b>	<b>769</b>	<b>771</b>	<b>736</b>
Freshman	513	558	611	606	568
Transfer	141	161	158	165	168
<b>Yield Rate</b>	<b>30.0%</b>	<b>29.4%</b>	<b>29.5%</b>	<b>27.2%</b>	<b>29.1%</b>
Freshman	27.4%	26.0%	26.8%	24.2%	25.7%
Transfer	46.4%	53.1%	48.0%	49.3%	52.3%

\*As of the beginning of the Fall semester

## Average SAT Scores for First-time Full-time Freshmen

Wilkes Freshmen	<u>Fall 2010</u>	<u>Fall 2011</u>	<u>Fall 2012</u>	<u>Fall 2013</u>	<u>Fall 2014</u>
<b>Verbal</b>	519	515	517	509	512
<b>Math</b>	542	537	537	531	531
<b>Writing</b>	513	509	508	498	499
<b>Total Math &amp; Verbal</b>	1060	1051	1054	1040	1043
<b>National Average</b>					
<b>Verbal</b>	501	497	496	496	497
<b>Math</b>	516	514	514	514	513
<b>Writing</b>	492	489	488	488	487
<b>Total Math &amp; Verbal</b>	1017	1011	1010	1010	1010

## Undergraduate Retention of First-time Full-time Freshmen

Entering Fall Term*		1st Fall	Retention Rates						
			2nd Fall	3rd Fall	4th Fall	5th Fall	6th Fall	7th Fall	8th Fall
2003	N	510	407	362	336	78	16	2	3
	%		79.8%	71.0%	65.9%	15.3%	3.1%	0.4%	0.6%
2004	N	551	443	390	371	70	9	4	3
	%		80.4%	70.8%	67.3%	12.7%	1.6%	0.7%	0.5%
2005	N	566	417	366	348	62	2	1	0
	%		73.7%	64.7%	61.5%	11.0%	0.4%	0.2%	0.0%
2006	N	571	453	387	354	78	16	2	1
	%		79.3%	67.8%	62.0%	13.7%	2.8%	0.4%	0.2%
2007	N	620	483	408	381	76	12	6	1
	%		77.9%	65.8%	61.5%	12.3%	1.9%	1.0%	0.2%
2008	N	561	447	355	337	72	7	5	
	%		79.7%	63.3%	60.1%	12.8%	1.2%	0.9%	
2009	N	527	417	359	337	70	13		
	%		79.1%	68.1%	63.9%	13.3%	2.5%		
2010	N	499	408	339	326	75			
	%		81.8%	67.9%	65.3%	15.0%			
2011	N	539	433	359	335				
	%		80.3%	66.6%	62.2%				
2012	N	589	462	402					
	%		78.4%	68.3%					
2013	N	584	459						
	%		78.6%						
2014	N	557							
	%								

\* As of official census date

Note: Includes retention of students who enter the School of Pharmacy.

## Graduation Rates for First-time Full-time Freshmen

Entering Fall Term*		1st Fall	Graduation Rates				
			within 4 yrs	within 5 yrs	within 6 yrs	within 7 yrs	within 8 yrs
2001	N	406 **	198	252	255	256	257
	%		48.8%	62.1%	62.8%	63.1%	63.3%
2002	N	471	224	266	272	277	278
	%		47.6%	56.5%	57.7%	58.8%	59.0%
2003	N	509 **	254	310	320	324	326
	%		49.9%	60.9%	62.9%	63.7%	64.0%
2004	N	550 **	288	349	355	357	359
	%		52.4%	63.5%	64.5%	64.9%	65.3%
2005	N	562 **	270	323	325	325	325
	%		48.0%	57.5%	57.8%	57.8%	57.8%
2006	N	570 **	279	334	346	348	350
	%		48.9%	58.6%	60.7%	61.1%	61.4%
2007	N	620	291	348	359	363	
			46.9%	56.1%	57.9%	58.5%	
2008	N	559 **	249	308	311		
	%		44.5%	55.1%	55.6%		
2009	N	527	250	303			
	%		47.4%	57.5%			
2010	N	499	240				
	%		48.1%				

\*As of official census date

\*\*Cohort adjusted in accordance with IPEDS regulations

## Student Credit Hours by Department and Subject

<b>Undergraduate</b>	<b>2009-10</b>	<b>2010-11</b>	<b>2011-12</b>	<b>2012-13</b>	<b>2013-14</b>
<b>Department of Aerospace Studies</b>	<b>205</b>	<b>231</b>	<b>184</b>	<b>174</b>	<b>171</b>
Aerospace Studies	205	231	184	174	171
<b>Division of Biology &amp; Health Sciences</b>	<b>3,826</b>	<b>3,899</b>	<b>4,040</b>	<b>3,997</b>	<b>4,323</b>
Biology	3,826	3,896	4,040	3,997	4,323
Marine Science	-	3	-	-	-
<b>Department of Chemistry</b>	<b>3,207</b>	<b>3,080</b>	<b>3,542</b>	<b>3,540</b>	<b>3,493</b>
Chemistry	3,207	3,080	3,542	3,540	3,493
<b>Department of Finance, Accounting &amp; Management</b>	<b>5,752</b>	<b>5,574</b>	<b>5,466</b>	<b>4,903</b>	<b>5,136</b>
Adult Business Administration	328	300	420	432	445
Accounting	1,285	1,215	1,284	1,263	1,314
Business Administration	4,139	4,059	3,762	1,456	1,471
Finance	-	-	-	438	582
Management	-	-	-	1,314	1,324
<b>Dept. of Entrepreneurship, Leadership &amp; Marketing</b>	<b>1,061</b>	<b>1,186</b>	<b>1,169</b>	<b>1,691</b>	<b>2,027</b>
Entrepreneurship	579	573	574	574	666
Leadership	-	-	-	189	249
Marketing	-	-	-	606	762
Personal & Professional Development	482	613	595	322	350
<b>Department of Communication Studies</b>	<b>2,841</b>	<b>2,747</b>	<b>2,470</b>	<b>2,487</b>	<b>2,419</b>
Communications	2,841	2,747	2,470	2,487	2,419
<b>Department of Education</b>	<b>2,854</b>	<b>3,294</b>	<b>3,025</b>	<b>2,303</b>	<b>1,900</b>
Education	2,569	2,661	2,452	1,850	1,465
Special Education	285	633	573	453	435
<b>Electrical Engineering, Bioengineering &amp; Physics</b>	<b>2,549</b>	<b>2,544</b>	<b>2,586</b>	<b>3,053</b>	<b>3,273</b>
Electrical Engineering	865	913	732	969	1,135
Physics	1,684	1,631	1,854	2,084	2,138
<b>Mechanical Engineering &amp; Engineering Mgt Dept</b>	<b>2,165</b>	<b>2,322</b>	<b>2,576</b>	<b>3,263</b>	<b>3,953</b>
Engineering	691	883	914	1,112	1,225
Engineering Management	183	146	184	216	392
Mechanical Engineering	1,291	1,293	1,478	1,935	2,336
<b>Dept. of Environmental Engr. &amp; Earth Sciences</b>	<b>1,872</b>	<b>2,129</b>	<b>1,992</b>	<b>2,159</b>	<b>2,497</b>
Earth & Environmental Sciences	1,230	1,420	1,467	1,604	1,873
Environmental Engineering	642	709	525	555	624
<b>Division of Humanities</b>	<b>5,562</b>	<b>5,358</b>	<b>5,185</b>	<b>5,378</b>	<b>5,359</b>
English	4,715	4,541	4,489	4,738	4,589
Philosophy	847	817	696	640	770
<b>Department of Global History &amp; Foreign Languages</b>	<b>4,338</b>	<b>3,826</b>	<b>3,303</b>	<b>3,657</b>	<b>3,520</b>
French	210	135	174	144	135
History	2,814	2,584	2,364	2,436	2,200
Spanish	1,314	1,107	765	1,077	1,185

(Continued on following page)

## Student Credit Hours by Department & Subject (continued)

<b>Undergraduate</b>	<b>2009-10</b>	<b>2010-11</b>	<b>2011-12</b>	<b>2012-13</b>	<b>2013-14</b>
<b>Integrative Media and Art Department</b>	<b>1,745</b>	<b>1,771</b>	<b>1,716</b>	<b>1,842</b>	<b>1,952</b>
Integrative Media	439	433	417	528	596
Art	1,306	1,338	1,299	1,314	1,356
<b>Interdisciplinary</b>	<b>2,135</b>	<b>2,070</b>	<b>2,132</b>	<b>2,395</b>	<b>2,299</b>
Cooperative Education	154	122	72	110	81
Career Planning	217	255	211	218	187
Freshman Foundations	1,677	1,635	1,776	1,953	1,911
Interdisciplinary Core Studies	-	3	-	-	-
Study Travel Experience	6	-	-	-	-
Women's Studies	81	55	73	114	120
<b>Department of Math &amp; Computer Science</b>	<b>6,337</b>	<b>6,320</b>	<b>6,559</b>	<b>6,951</b>	<b>7,707</b>
Computer Science	2,081	2,079	2,117	1,999	2,311
Mathematics	4,256	4,241	4,442	4,952	5,396
<b>School of Nursing</b>	<b>3,365</b>	<b>3,506</b>	<b>4,317</b>	<b>5,251</b>	<b>5,357</b>
Nursing	3,365	3,506	4,317	5,251	5,357
<b>School of Pharmacy</b>	<b>5,203</b>	<b>5,122</b>	<b>5,260</b>	<b>5,250</b>	<b>5,194</b>
Pharmacy	5,063	4,995	5,200	5,198	5,158
Pharmaceutical Sciences	140	127	60	52	36
<b>Division of Behavioral &amp; Social Sciences</b>	<b>9,917</b>	<b>9,261</b>	<b>9,243</b>	<b>9,110</b>	<b>9,721</b>
Anthropology	747	822	711	594	870
Economics	1,008	798	1,098	959	926
International Studies	6	3	9	12	3
Political Science	1,575	1,542	1,407	1,323	1,237
Psychology	4,049	3,828	3,783	3,682	3,969
Sociology	2,532	2,268	2,235	2,540	2,716
<b>Division of Performing Arts</b>	<b>2,462</b>	<b>2,079</b>	<b>2,240</b>	<b>2,274</b>	<b>2,206</b>
Dance	843	793	913.5	855	711
Music	902	731	793.5	778	880
Theatre Arts	717	555	533	641	615
<b>Total</b>	<b>67,396</b>	<b>66,319</b>	<b>67,005</b>	<b>69,678</b>	<b>72,507</b>

(Continued on following page)

## Student Credit Hours by Department & Subject (continued)

<b>Graduate</b>	<b>2009-10</b>	<b>2010-11</b>	<b>2011-12</b>	<b>2012-13</b>	<b>2013-14</b>
<b>Division of Biology &amp; Health Sciences</b>	<b>16</b>	<b>30</b>	<b>12</b>	<b>33</b>	<b>31</b>
Biology	16	30	12	33	31
<b>Department of Chemistry</b>	<b>6</b>	<b>15</b>	<b>-</b>	<b>-</b>	<b>36</b>
<b>Department of Finance, Accounting &amp; Management</b>	<b>4,137</b>	<b>3,272</b>	<b>2,815</b>	<b>2,362</b>	<b>2,558</b>
<b>Graduate Teacher Education</b>	<b>51,286</b>	<b>47,493</b>	<b>37,560</b>	<b>32,025</b>	<b>26,511</b>
Autism	102	150	60	129	207
Education	40,699	36,753	27,168	21,648	17,136
Special Education	492	468	450	396	246
Educational Advanced Methods	5,091	4,602	3,825	3,738	3,585
Education – International School Leadership	-	-	-	15	39
Education - Instructional Media	3,990	4,368	3,999	2,952	2,748
Education - Middle Level	-	-	531	1,368	636
English as a Second Language	240	357	849	1,074	1,110
School Business Leadership	672	795	678	705	804
<b>Electrical Engineering, Bioengineering &amp; Physics</b>	<b>194</b>	<b>168</b>	<b>165</b>	<b>165</b>	<b>306</b>
Bioengineering	-	-	-	99	192
Electrical Engineering	194	141	144	54	105
Physics	-	27	21	12	9
<b>Mechanical Engineering &amp; Engineering Management Dept</b>	<b>149</b>	<b>222</b>	<b>573</b>	<b>597</b>	<b>531</b>
Engineering Operations & Strategy	149	162	33	-	-
Engineering Management	-	-	333	372	249
Mechanical Engineering	-	60	207	225	282
<b>Creative Writing</b>	<b>1,887</b>	<b>1,827</b>	<b>1,639</b>	<b>1,443</b>	<b>1,441</b>
<b>Division of Humanities</b>	<b>51</b>	<b>54</b>	<b>28</b>	<b>33</b>	<b>18</b>
English	30	21	19	18	18
History	21	33	9	15	-
<b>Dept. of Environmental Engr. and Earth Sciences</b>	<b>3</b>	<b>18</b>	<b>30</b>	<b>48</b>	<b>51</b>
Earth & Environmental Sciences	3	15	-	-	-
Sustainability	-	3	30	48	51
<b>Department of Math &amp; Computer Science</b>	<b>65</b>	<b>49</b>	<b>44</b>	<b>34</b>	<b>67</b>
Computer Science	18	6	-	6	3
Mathematics	47	43	44	28	64
<b>School of Nursing</b>	<b>820</b>	<b>1,234</b>	<b>1,299</b>	<b>1,395</b>	<b>1,442</b>
<b>School of Pharmacy</b>	<b>4,817</b>	<b>4,652</b>	<b>4,485</b>	<b>4,836</b>	<b>4,932</b>
<b>Total</b>	<b>63,431</b>	<b>59,034</b>	<b>48,650</b>	<b>42,971</b>	<b>37,924</b>



## **Student Development**

The Student Development Office offers educational and social experiences that enhance the quality of student life and learning. A few of the programs offered include the Cultural Series and Adventure Education program, which both provide meaningful out of the classroom learning experiences. The Cultural Series introduces students to the world of art and performance by providing several opportunities each semester to experience visual art, music, theater and dance both locally and in larger Metropolitan areas such as New York City, Philadelphia and Washington DC. The Adventure Education program is an alternative learning experience designed to challenge students to engage in physically demanding activities that emphasize wellness and provide practical leadership tools and lessons on teamwork. Students will have the opportunity to sign up for adventures such as white water rafting, skydiving, hiking and mountain biking.

The Student Development Office also coordinates a weekend entertainment series, which gives students a variety of entertainment options to choose from each weekend. A few of the weekly attractions include free bowling, discounted movie passes and free admittance to local performances at the Little Theater of Wilkes-Barre. In addition, Student Development also coordinates periodic day trips to professional sporting events and theme parks. Several of the University's clubs are listed below.

### **Clubs and Organizations**

Air Force ROTC	Fencing Club	Pre-Law Club
Air & Waste Mgt. Assn.	Free Spirit Club	Pre-Pharmacy Club
Alternative Spring Break	Health & Fitness Club	Pre-Professional Health Club
Amateur Radio Club	Hindu Spirituality Club	Programming Board
Amnicola	History Club	PSEA Education Club
Anime Club	Hockey Club	Psychology Club
Art Club	IEEE Club	Robotics Club
ASME	Indian Cultural Association	Rock Climbing Club
BACCHUS	International Services Club	Rowing Club
The Beacon	Inter-Resident Hall Council	Running Club
Biology Club	Islamic Interest Society	Saudi Interest Club
Cheerleading	Lacrosse Club	Self Defense Club
Chemistry Club	Longboarding Club	Ski Club
Choral Club	Marketing Club	Society for the Advancement SAM
Christian Fellowship Club	MANUSCRIPT	Society of Automotive Engineers
College Democrats Club	Math Club	Society of Women Engineers
College Republicans	MBA Student Association	Sociology Club
Comic Book Club	Medieval Renaissance Club	Spanish Club
Communications Club	MENC Music Club	Student Alumni Association
Commuter Council	Multicultural Student Coalition	Student Health Advisory
Dance Team	Nursing Student Organization	Students for Envir. Sustainability
Debate Society	Off-Campus Council	Studio 20
Delta Epsilon Chi	PA Pharmacists Association	Swimming Club
Earth and Envir. Sciences Club	PA Society of Prof. Engineers	Television Club
ENACTUS	Paintball Club	Ultimate Frisbee
Environmental Club	Personal Finance Club	Wilkes African Cultural Association
Equestrian Club	Pool Players Club	Wilkes in the World

Source: Student Affairs

## **Leadership Institute**

The Student Affairs Leadership Institute, which functions as the coordinating body for all Student Affairs leadership programs, provides continuous opportunities to enhance the leadership skills of students and members of the community. By offering a variety of leadership programs that promote self-awareness, problem solving, service learning and multicultural issues, the Institute empowers students to explore their own personal leadership style. A few of the programs and services offered by the Institute include: Intercollegiate Leadership Wilkes-Barre, National Society of Leadership & Success Speaker Series, Sigma Alpha Pi Honor Society, Leadership Assessments, and a Step-Up Rock Wall and Ropes courses.

The Leadership Development Center, which is one of the elements of the Institute, is located on the first floor of the Henry Student Center. The center contains a leadership library and provides space for small group activities and leadership training.

Source: Student Affairs

## **University College Programs and Services**

ACT 101 Program	A program funded by the Pennsylvania Department of Education to provide academic support and guidance for eligible students.
Advising Services	University College coordinates services for faculty and students to support the advising process. This includes providing advising for “deciding” students and for those who intend to apply for restricted majors.
Career Services	The Office of Career Services offers comprehensive career education and support for professional career development for the Wilkes community.
Disability Support Services	Staff coordinates services and support for self-identified and certified students with disabilities.
First Year Program	A program for first-year students who may benefit from a guided transition to college studies.
Learning Skills Program	This program provides one-on-one assistance as well as workshops and presentations designed to support student success.
Prior Learning Assessment (PLA)	UC coordinates the process to award credit for life experience and serves as the point of contact for interested students.
Supplemental Instruction	Supplemental instruction is intensive academic support available for a number of courses for which review sessions have been deemed particularly beneficial.
Peer Tutoring	Free tutoring assistance is available to all undergraduate students enrolled at Wilkes. Tutoring is available in most courses at the introductory level as well as some other high-demand courses.
Transfer Student Support Services	UC monitors and provides assistance for transfer students to support their success at the University.
Upward Bound Program	This federally-funded program offers a comprehensive educational experience for financially-eligible high school students who are first-generation college-bound students.

Source: University College

## ***Civic Engagement***

A liberal arts education teaches students to look at the world as a whole, to begin making connections between things like interpersonal conflict and international relations, between education and poverty, between thinking about themselves to thinking about “me in the world.” The Civic Engagement Office coordinates projects that bridge service and learning. Many academic departments offer Service-Learning courses that integrate classroom theory and hands-on experience with a pressing social issue. Service-Learning is a pedagogically structured learning experience that combines academic coursework and community service to provide students with the opportunities to transfer the skills taught in the classroom to the “real” world. Ideally, students work with community partners to identify strengths and areas of need, develop and implement projects that enhance those strengths or that meet identified needs, and then reflect on the value of the experience for the community and themselves. Through guided reflection, students gain further understanding of course content, a broader appreciation of the discipline, and an enhanced sense of civic responsibility. Last year 950 students engaged in academic Service-Learning. One of the most highly regarded service-learning offerings is taught in the First Year Foundations (FYF) course “Be the Change.” This course focuses on collecting and recording the oral histories of veterans, spouses and dependents in Luzerne County. Over the past three years the FYF class has recorded over 175 oral histories from veterans ranging from WWII to the current conflict.

In addition to the in-class service-learning, Wilkes students, staff and faculty contributed over 65,000 hours of community service by exploring issues of hunger and homelessness, at-risk youth, access to health care, environmental sustainability, and countless other service experiences. The students of Wilkes partner with numerous organizations including The American Cancer Society, the American Red Cross, the Commission on Economic Opportunity (CEO), the Disaster Recovery Coalition of Luzerne County, the United Way, and the Victims Resource Center.

Students extend Wilkes’ spirit of service beyond local borders by volunteering during Alternative Fall Break in Northeastern Pennsylvania, and traveling domestically and internationally to serve during Spring Break. In spring 2015 students will have the opportunity to interview for one of five trip offerings. Students have the opportunity to travel with faculty and staff mentors to Kentucky to work with Christian Appalachian Project, a program that matches homeowners with building teams, Dominican Republic to work on public health programs and teach English as a second language in the school system with Guanin El Centro Cultural Toristico, and a build for Habitat for Humanity in North Carolina. And for the fourth year the civic engagement office is partnering with a political science faculty to sustain the Costa Rica service-learning experience with Raising Awareness Worldwide. In extraordinary ways, Wilkes students are leading, mentoring, learning, and changing the world through service.

## ***Career Placement of 2013 Graduates***

Working full-time/full-time military career	67%
Attending full-time graduate/professional schools	23%
Working part-time, attending graduate school part-time	5%
Seeking employment	5%

### **Employer Locations**

Northeastern Pennsylvania	50%
Other Pennsylvania cities	27%
New York, New Jersey	8%
Other states, international	15%

### **Graduate/Professional Schools**

In Pennsylvania	68% (33% in Northeastern PA)
In other states or international	32%

### **Relationship of Employment to Academic Major**

Closely related	74%
Somewhat related	17%
Not related	9%

## **Athletics**

Wilkes sponsors an active intramural sports program as well as intercollegiate competition in 19 varsity sports. Varsity teams compete at the Division III level. The University is a member of the National Collegiate Athletic Association (NCAA), Middle Atlantic Conference (MAC), the Freedom Conference, the Eastern Collegiate Athletic Conference (ECAC), and the Metropolitan Conference for Wrestling. There were 408 student athletes on the roster for the 2013-14 season.

### **Varsity Programs**

#### **Men**

Baseball  
Basketball  
Cross Country  
Football  
Golf  
Soccer  
Swimming  
Tennis  
Wrestling

#### **Women**

Basketball  
Cross Country  
Field Hockey  
Golf  
Lacrosse  
Soccer  
Softball  
Swimming  
Tennis  
Volleyball

### **Athletic Department Statistics 2013-14**

	<b><u>Wins</u></b>	<b><u>Losses</u></b>	<b><u>Ties</u></b>
Baseball	14	21	
Men's Basketball	8	16	
Women's Basketball	6	19	
Field Hockey	8	12	
Football	4	6	
Women's Lacrosse	13	3	
Men's Soccer	9	8	1
Women's Soccer	9	7	4
Softball	14	24	
Men's Tennis	18	2	
Women's Tennis	19	3	
Volleyball	18	15	
Wrestling	18	3	
Golf	0	8	

Source: Athletics

## FACULTY and STAFF

### *Staff by Category and Gender*

	Fall 2014							Fall 2013
	Admin.	Clerical	Maint./ Custodial	Public Safety	Coach	IT	Total	Total
<b>Full-time Staff</b>								
Male	68	2	35	12	13	16	146	125
Female	134	61	13	4	2	4	218	203
<b>Total</b>	<b>202</b>	<b>63</b>	<b>48</b>	<b>16</b>	<b>15</b>	<b>20</b>	<b>364</b>	<b>328</b>
<b>Part-time Staff</b>								
Male	23	1	1	6	17	0	48	43
Female	46	3	0	0	4	0	53	54
<b>Total</b>	<b>69</b>	<b>4</b>	<b>1</b>	<b>6</b>	<b>21</b>	<b>0</b>	<b>101</b>	<b>97</b>
<b>Total Staff</b>								
Male	91	3	36	18	30	16	194	168
Female	180	64	13	4	6	4	271	257
<b>Total</b>	<b>271</b>	<b>67</b>	<b>49</b>	<b>22</b>	<b>36</b>	<b>20</b>	<b>465</b>	<b>425</b>

## Faculty by Gender and Tenure Status

Full-time Faculty	Fall 2014			Fall 2013
	Male	Female	Total	Total
Professors	25	8	33	31
Associate Professors	40	33	73	70
Assistant Professors*	21	24	45	45
Faculty of Practice***	1	10	11	6
Instructors	-	-	-	2
Visiting**	5	5	10	12
<b>Total Full-time Faculty</b>	<b>92</b>	<b>80</b>	<b>172</b>	<b>166</b>

\* Includes two ¼ Asst. Professors

\*\*Includes four Visiting Instructors and five Visiting Asst. Professors and one ¼ Visiting Asst. Professor

\*\*\*Includes one ¼ Faculty of Practice

	Fall 2014			Fall 2013
	Male	Female	Total	Total
<b>Tenured</b>				
Professor	25	8	33	31
Associate Professor	38	33	71	66
Assistant Professor	1	0	1	1
<b>Total Tenured</b>	<b>64</b>	<b>41</b>	<b>105</b>	<b>98</b>
<b>Tenure Track</b>				
Professor	-	-	-	-
Associate Professor	2	-	2	4
Assistant Professor	19	22	41	42
<b>Total Tenure Track</b>	<b>21</b>	<b>22</b>	<b>43</b>	<b>46</b>
<b>Not on Tenure Track</b>				
Assistant Professor	1	-	1	-
Assistant Professor ¾- time	-	2	2	1
Assistant Professor ½- time	-	-	-	1
Faculty of Practice	1	9	10	5
Faculty of Practice ¾-time	-	1	1	1
Instructor	-	-	-	2
<b>Total Not on Tenure Track</b>	<b>2</b>	<b>12</b>	<b>14</b>	<b>10</b>
<b>Visiting</b>				
Assistant Professor	2	3	5	10
Assistant Professor 3/4	1	-	1	-
Instructor	2	2	4	2
<b>Total Visiting</b>	<b>5</b>	<b>5</b>	<b>10</b>	<b>12</b>
<b>Total Full-time Faculty</b>	<b>92</b>	<b>80</b>	<b>172</b>	<b>166</b>

<b>Part-time Faculty</b>	<b>Fall 2014</b>			<b>Fall 2013</b>
	<b>Male</b>	<b>Female</b>	<b>Total</b>	<b>Total</b>
<b>Not on Tenure Track</b>				
Undergraduate	44	45	89	89
Graduate	17	36	53	122
ESL	-	-	-	1
<b>Total Part-time Faculty</b>	<b>61</b>	<b>81</b>	<b>142</b>	<b>212</b>

### **Full-time Faculty by Department**

<b>Department</b>	<b>Prof.</b>	<b>Assoc. Prof.</b>	<b>Asst. Prof.</b>	<b>Fac. of Pract.</b>	<b>Instr.</b>	<b>Visiting</b>	<b>Total</b>	<b>Tenured</b>	<b>On Tenure Track</b>
<b>Biology &amp; Health Sciences</b>	3	7	1	-	-	-	11	10	1
<b>Behavioral &amp; Social Sciences****</b>	6	5	3	-	-	1	15	11	3
<b>Business****</b>	4	6	5	-	-	1	16	10	5
<b>Chemistry**</b>	-	4	2	-	-	2	8	4	2
<b>Communication Studies</b>	1	2	2	1	-	-	6	3	2
<b>Education*****</b>	1	5	6	3	-	-	15	6	6
<b>Engineering &amp; Physics**</b>	7	1	6	-	-	2	16	8	6
<b>Envir. Engr. &amp; Earth Sci.*****</b>	4	2	1	-	-	2	9	6	1
<b>English &amp; Philosophy****</b>	-	9	-	1	-	1	11	9	-
<b>Global History &amp; Languages</b>	2	2	2	-	-	-	6	4	2
<b>Integrative Media</b>	-	2	-	1	-	-	3	1	1
<b>Math &amp; Computer Science***</b>	2	6	2	-	-	1	11	8	2
<b>Nursing</b>	-	4	8	4	-	-	16	4	8
<b>Pharmacy*</b>	3	15	6	-	-	-	24	18	3
<b>Performing Arts</b>	-	3	1	1	-	-	5	3	1
<b>Total</b>	<b>33</b>	<b>73</b>	<b>45</b>	<b>11</b>	<b>-</b>	<b>10</b>	<b>172</b>	<b>105</b>	<b>43</b>

\* Includes two ¾ Asst. Professors

\*\* Includes two Visiting Instructors

\*\*\* Includes one ¼ Visiting Asst. Professor

\*\*\*\* Includes one Visiting Asst. Professor

\*\*\*\*\* Includes one ¼ Faculty of Practice

\*\*\*\*\* Includes two Visiting Asst. Professors



### **Full-time Faculty Degrees**

<b>Full-time Faculty with Doctorates</b>	<b>Male</b>		<b>Female</b>		<b>Total</b>	
	<b>N</b>	<b>%</b>	<b>N</b>	<b>%</b>	<b>N</b>	<b>%</b>
Professors	25	100.0%	8	100.0%	33	100.0%
Associate Professors	38	95.0%	31	93.9%	69	94.5%
Assistant Professors	18	85.7%	21	87.5%	39	86.7%
Faculty of Practice	0	0.0%	0	0.0%	0	0.0%
Visiting	4	80.0%	3	60.0%	7	70.0%
<b>Total</b>	<b>85</b>	<b>92.4%</b>	<b>63</b>	<b>78.8%</b>	<b>148</b>	<b>86.0%</b>

<b>Full-time Faculty with Terminal Degrees*</b>	<b>Male</b>		<b>Female</b>		<b>Total</b>	
	<b>N</b>	<b>%</b>	<b>N</b>	<b>%</b>	<b>N</b>	<b>%</b>
Professors	25	100.0%	8	100.0%	33	100.0%
Associate Professors	40	100.0%	33	100.0%	73	100.0%
Assistant Professors	19	90.5%	21	87.5%	40	88.9%
Faculty of Practice	0	0.0%	1	10.0%	1	9.1%
Visiting	4	80.0%	3	60.0%	7	70.0%
<b>Total</b>	<b>88</b>	<b>95.7%</b>	<b>66</b>	<b>82.5%</b>	<b>154</b>	<b>89.5%</b>

*\*Terminal degrees include Master of Business Administration/CPA and Master of Fine Arts.*

## Faculty and Staff by Ethnicity

Faculty	Full-time		Part-Time	
White	146	84.9%	130	91.5%
American Indian/Alaskan	1	0.6%	0	0.0%
Asian	11	6.4%	3	2.1%
Black	2	1.2%	2	1.4%
Hawaiian/Pacific Isl.	0	0.0%	0	0.0%
Hispanic	4	2.3%	1	0.7%
Non-Resident Alien	5	2.9%	0	0.0%
Two or more races	1	0.6%	1	0.7%
Unspecified	2	1.2%	5	3.5%
<b>Total Faculty</b>	<b>172</b>		<b>142</b>	

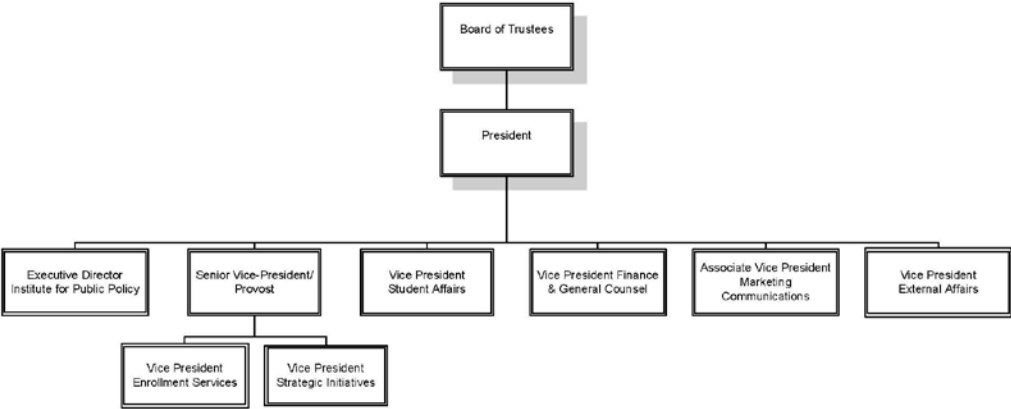
Staff	Full-time		Part-Time	
White	343	94.2%	92	91.1%
American Indian/Alaskan	0	0.0%	0	0.0%
Asian	1	0.3%	3	3.0%
Black	6	1.6%	0	0.0%
Hawaiian/Pacific Isl.	0	0.0%	0	0.0%
Hispanic	5	1.4%	0	0.0%
Non-Resident Alien	0	0.0%	0	0.0%
Two or more races	4	1.1%	2	2.0%
Unspecified	5	1.4%	4	4.0%
<b>Total Staff</b>	<b>364</b>		<b>101</b>	

Total University	Full-time		Part-Time	
White	489	91.2%	222	91.4%
American Indian/Alaskan	1	0.2%	0	0.0%
Asian	12	2.2%	6	2.5%
Black	8	1.5%	2	0.8%
Hawaiian/Pacific Isl.	0	0.0%	0	0.0%
Hispanic	9	1.7%	1	0.4%
Non-Resident Alien	5	0.9%	0	0.0%
Two or more races	5	0.9%	3	1.2%
Unspecified	7	1.3%	9	3.7%
<b>Total University</b>	<b>536</b>		<b>243</b>	

# ORGANIZATIONAL CHARTS

*Administrative*

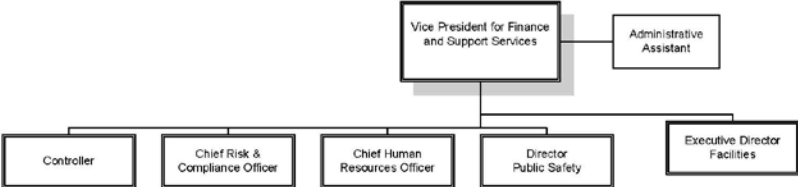
## Wilkes University Administrative Organization



October 2014

**Finance and Support Operations**

**Wilkes University**  
Finance and Support Operations

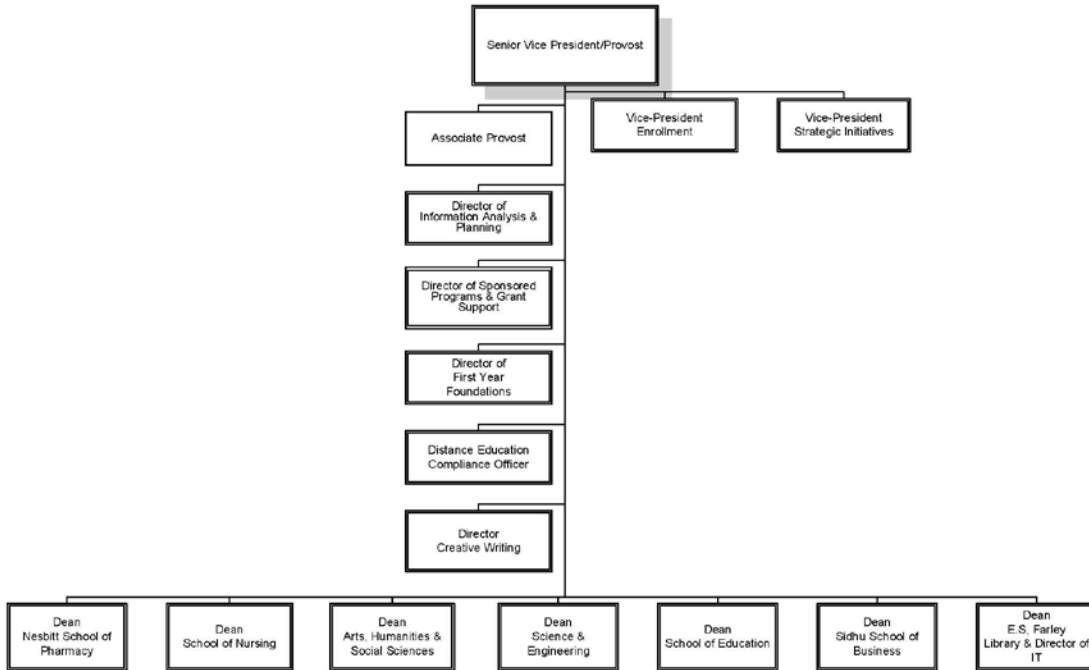


October 2014

# Provost

## Wilkes University

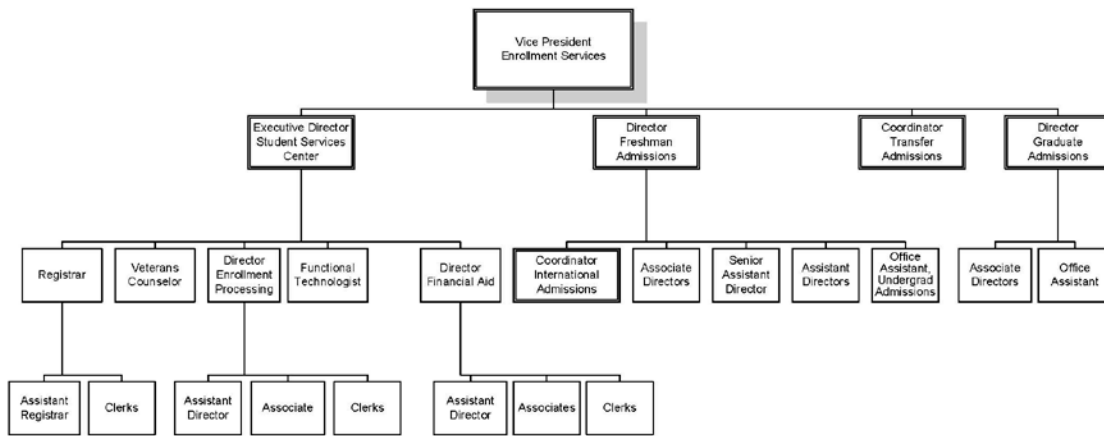
Provost



October 2014

# Enrollment Services

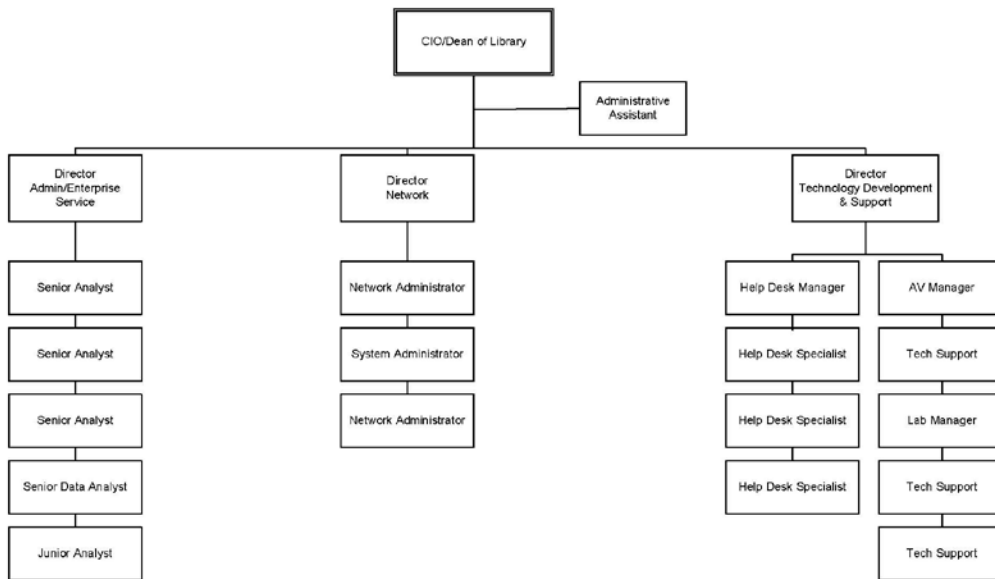
## Wilkes University Enrollment Services



October 2014

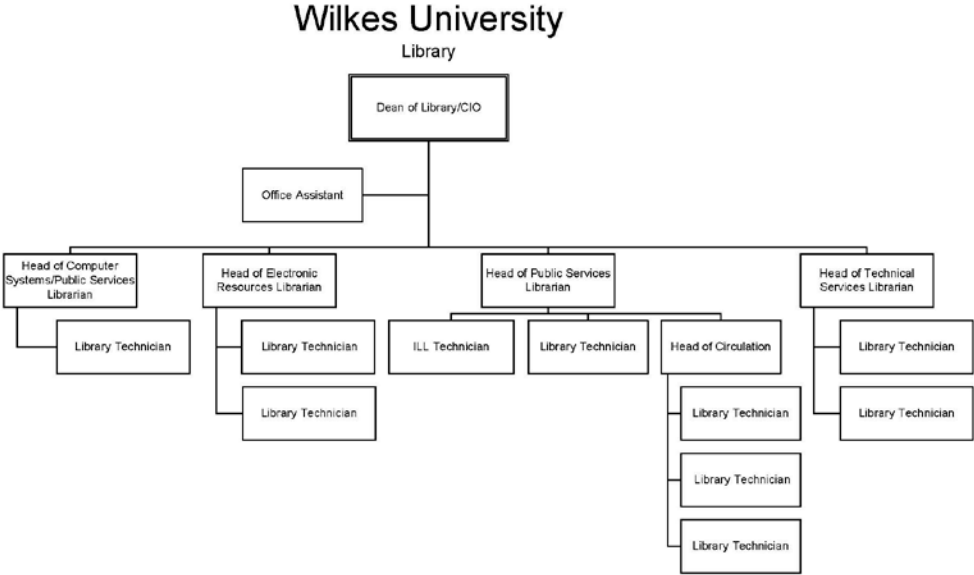
# Information Technology Services

## Wilkes University Information Technology Services



October 2014

**Library**

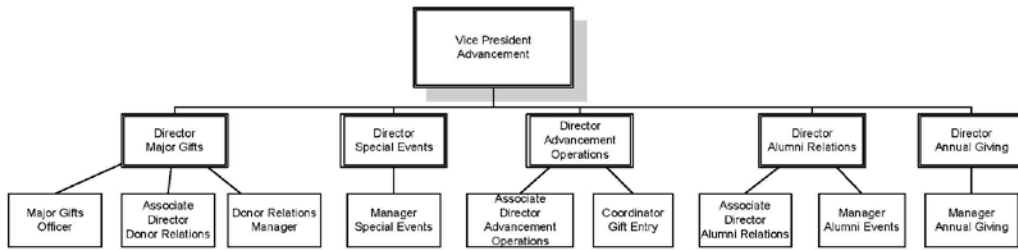


October 2014



# Advancement

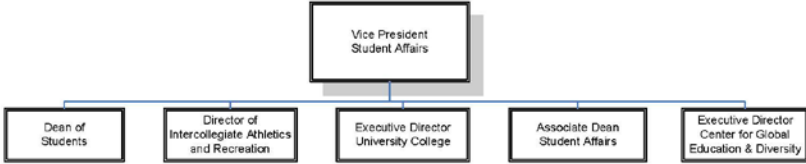
## Wilkes University Advancement



October 2014

**Student Affairs**

**Wilkes University**  
Student Affairs

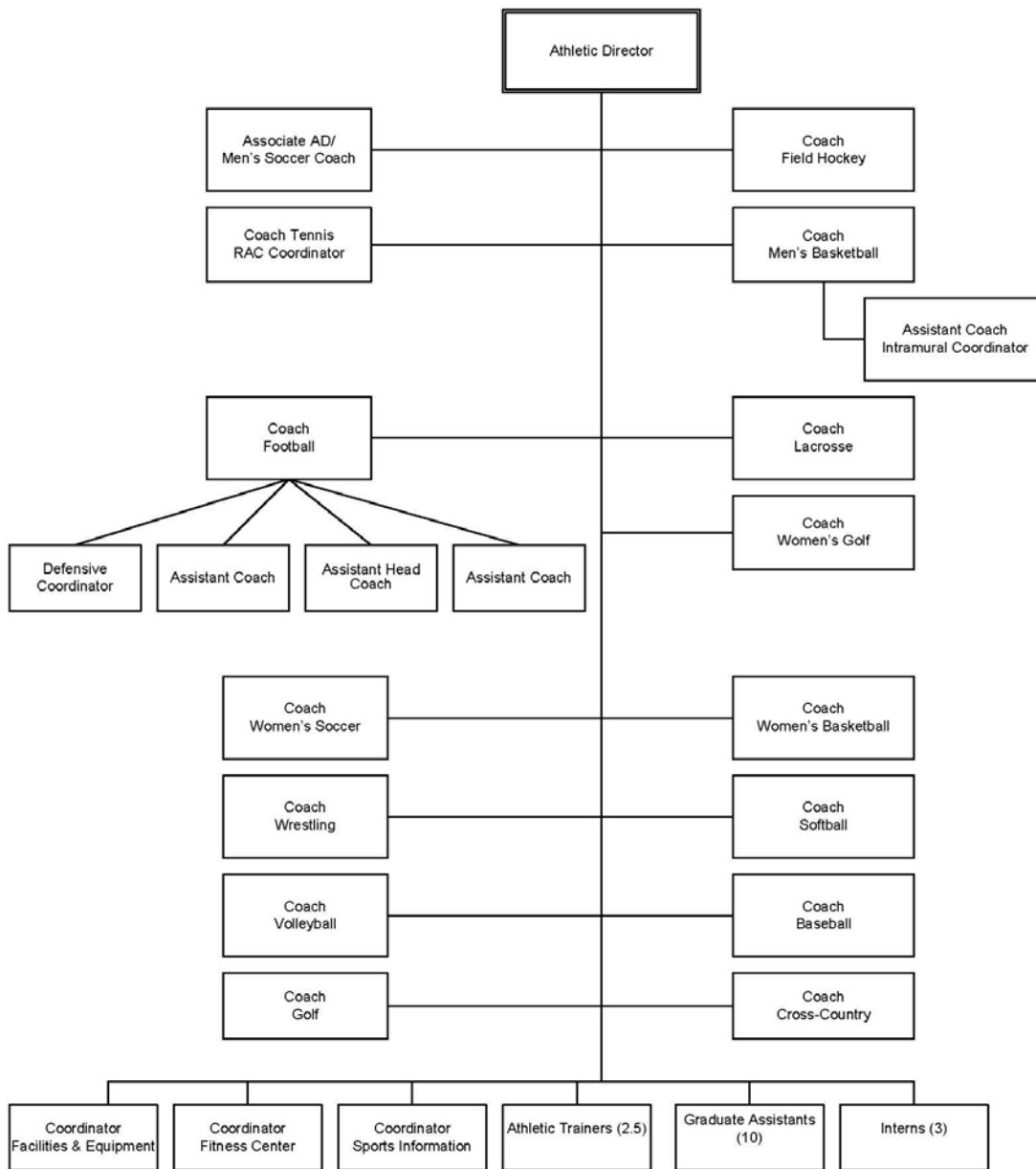


October 2014

**Student Affairs – Athletics**

# Wilkes University

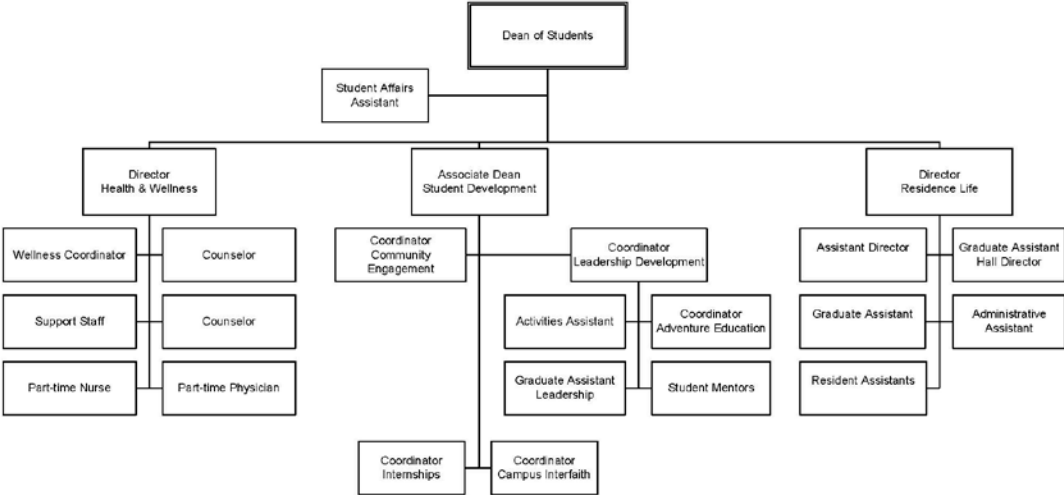
## Student Affairs Athletics



October 2014

**Student Affairs – Student Development, Health & Wellness, Residence Life**

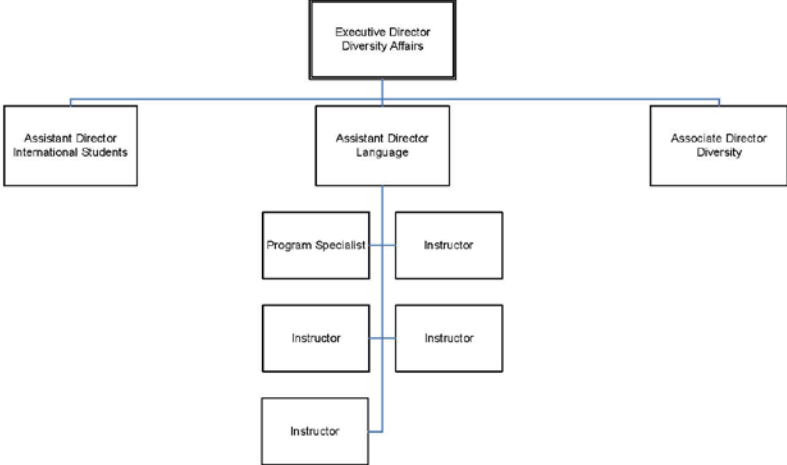
**Wilkes University**  
 Student Affairs  
 Student Development/Health & Wellness/Residence Life



October 2014

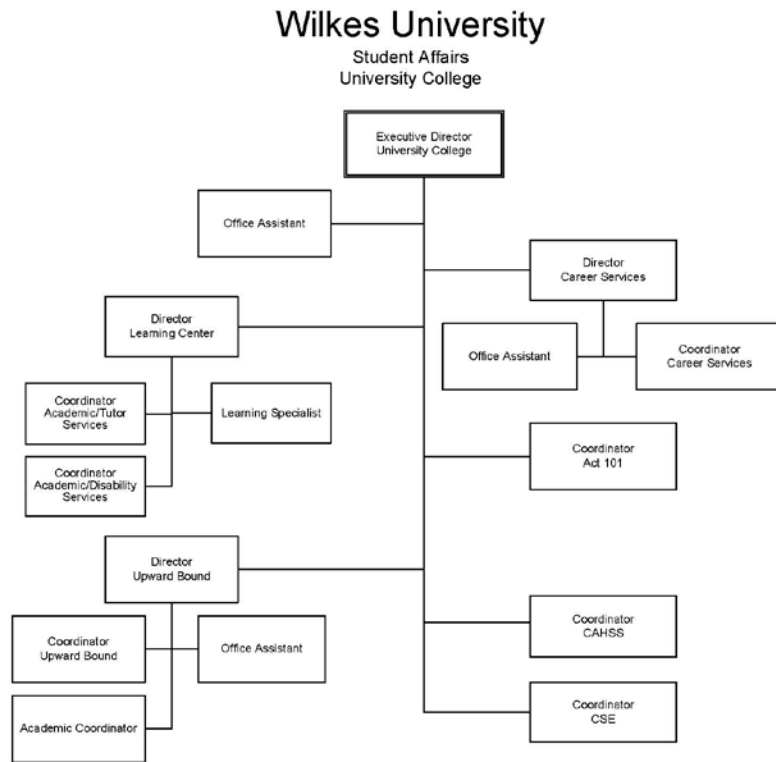
**Student Affairs – Diversity Affairs**

**Wilkes University**  
Student Affairs – Diversity Affairs



October 2014

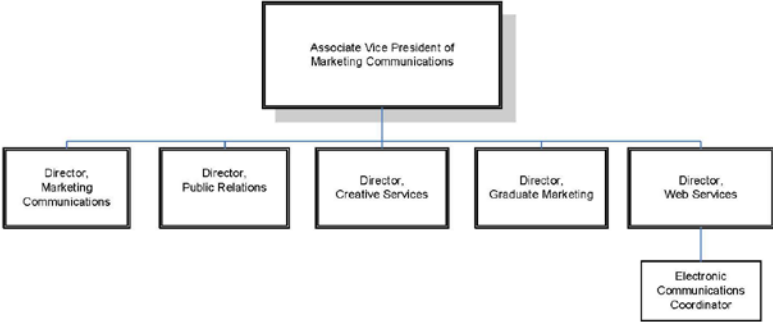
# Student Affairs – University College



October 2014

**Marketing/Communications**

**Wilkes University**  
Marketing/Communications



October 2014

## FINANCES

### Statement of Activities

	<u>FY 2013</u>	<u>FY 2014</u>
	<u>AMOUNT</u>	<u>AMOUNT</u>
<b>REVENUES AND OTHER SUPPORT</b>		
Tuition and Fees	\$89,298,480	\$93,059,299
Less Scholarship Aid	<u>(28,229,649)</u>	<u>(29,037,152)</u>
<b>NET TUITION &amp; FEES</b>	61,068,831	64,022,147
Government Grants and Contracts	3,507,154	2,348,916
Private Gifts, Grants & Contracts	1,472,825	1,519,715
Sales and Services of Auxiliary Enterprises	9,611,354	12,526,486
Income from Interest and Dividends	618,870	698,839
Other Additions	803,636	870,463
Endowment Income Designated for Current Operations	<u>1,440,800</u>	<u>1,675,800</u>
<b>TOTAL REVENUES AND OTHER SUPPORT</b>	<b><u>\$78,523,470</u></b>	<b><u>\$83,662,366</u></b>
<b>EXPENDITURES</b>		
Instruction	\$32,741,474	\$33,631,802
Research	1,358,420	1,304,740
Public Service	1,105,708	873,537
Academic Support	8,767,235	9,545,667
Student Services	11,142,475	11,977,841
Institutional Support	12,123,593	12,130,097
Auxiliary Enterprises	<u>6,984,736</u>	<u>9,142,150</u>
<b>TOTAL EXPENSES</b>	<b><u>\$74,223,641</u></b>	<b><u>\$78,605,834</u></b>
Increase in Net Assets from Operating Activities	\$ 4,299,829	\$ 5,056,532
<b>NON-OPERATING INCOME (EXPENSES)</b>		
Private Gifts and Grants	2,458,710	962,136
Grants for Property, Plant and Equipment	2,055,254	-
Net Investment Return After Application of Spending Policy	4,483,204	2,808,379
Changes in Liabilities Under Split Interest Agreements and Perpetual Trusts	<u>611,688</u>	<u>327,426</u>
Increase(Decrease) in Net Assets from Non-Operating Activities	\$ 9,608,856	\$ 4,097,941
<b>TOTAL CHANGE IN NET ASSETS</b>	<b><u>\$13,908,685</u></b>	<b><u>\$9,154,473</u></b>
Net Assets, Beginning of Year	<u>\$80,894,295</u>	<u>\$94,802,980</u>
Net Assets, End of Year	<b><u>\$94,802,980</u></b>	<b><u>\$103,957,453</u></b>

Source: Audited Financial Statements 5/31/14



## ***Endowment and Other Long-Term Investments***

(At fair market value)

	<u>5/31/2013</u>	<u>5/31/2014</u>
<b>Endowment and Similar Funds:</b>		
Cash and cash equivalents	\$ 2,446,235	\$ 2,140,417
Fixed income investments	7,683,615	8,603,433
Common, preferred stocks and equity funds	24,369,164	26,838,568
Alternative investments	6,014,861	6,139,835
Total	<u>\$ 40,513,875</u>	<u>\$ 43,722,253</u>
<b>Annuity and Life Income Funds:</b>		
Cash and cash equivalents	\$ 9,583	\$ 20,412
Fixed income investments	-	86,690
Bonds, notes and bond funds	143,345	63,678
Common, preferred stocks and equity funds	364,916	427,430
Alternative Investments	110,722	71,123
Total	<u>\$ 628,566</u>	<u>\$ 669,333</u>
<b>Total Endowment and Similar Funds</b>	<u><b>\$ 41,142,441</b></u>	<u><b>\$ 44,391,586</b></u>
<b>Investments:</b>		
Current Funds:		
Cash and cash equivalents	\$ 18,326	\$ 13,096
Bonds, notes and bond funds	248,717	179,807
Common, preferred stocks and equity funds	403,369	494,559
Total Investments	<u>\$ 670,412</u>	<u>\$ 687,462</u>
<b>Deposits with Bond Trustee:</b>		
Cash and cash equivalents	<u>\$ 3,785,550</u>	<u>\$ 3,785,543</u>
Total Deposits	<u>\$ 3,785,550</u>	<u>\$ 3,785,543</u>
<b>Total Endowment, Investments and Similar Funds</b>	<u><b>\$ 45,598,403</b></u>	<u><b>\$ 48,864,591</b></u>

Source: Audited Financial Statements 5/31/14

## Tuition, Fees, Room and Board Charges

		<u>FY2011</u>	<u>FY 2012</u>	<u>FY2013</u>	<u>FY2014</u>	<u>FY2015</u>
<b>FULL-TIME</b>	<b>UNDERGRADUATE (Annual):</b>					
Tuition:	Full-time Tuition (12-18 Credits per semester)	\$25,802	\$26,834	\$27,908	\$28,884	\$29,750
Fees:	General University Fee	\$736	\$1,376	\$1,418	\$1,466	\$1,512
	Student Activity Fee	244	-	-	-	-
	Technology Fee	282	-	-	-	-
	Student Union Fee	52	-	-	-	-
	Recreation Fee	62	-	-	-	-
	<b>Total Fees</b>	<b>\$1,376</b>	<b>\$1,376</b>	<b>\$1,418</b>	<b>\$1,466</b>	<b>\$1,512</b>
	<b>Total Tuition &amp; Fees</b>	<b>\$27,178</b>	<b>\$28,210</b>	<b>\$29,326</b>	<b>\$30,350</b>	<b>\$31,262</b>
<b>PART-TIME</b>	<b>(Per Credit Hour)</b>					
	Tuition	\$715	\$745	\$775	\$802	\$826
	General University Fee	31	62	64	66	68
	Technology Fee	31	-	-	-	-
	<b>Total Cost</b>	<b>\$777</b>	<b>\$807</b>	<b>\$839</b>	<b>\$868</b>	<b>\$894</b>
<b>FULL-TIME</b>	<b>FIRST PROFESSIONAL (Annual):</b>					
Tuition:	Full-time Tuition (12-18 Credits per semester)	\$27,422	\$28,520	\$29,660	\$30,698	\$31,618
Fees:	General University Fee	\$736	1,376	1,418	1,466	1,512
	Clerkship Fee	1,000	1,000	1,030	-	-
	Pharmacy Professional Fee (maximum rate)	-	-	-	1,850	1,800
	Student Activity Fee	244	-	-	-	-
	Technology Fee	282	-	-	-	-
	Student Union Fee	52	-	-	-	-
	Recreation Fee	62	-	-	-	-
	<b>Total Fees</b>	<b>\$2,376</b>	<b>\$2,376</b>	<b>\$2,448</b>	<b>\$3,316</b>	<b>\$3,312</b>
	<b>Total Tuition &amp; Fees</b>	<b>\$29,798</b>	<b>\$30,896</b>	<b>\$32,108</b>	<b>\$34,014</b>	<b>\$34,930</b>
<b>ROOM AND BOARD</b>						
Room:	Residence Hall - Apartment Style	\$7,630	\$7,782	\$8,016	\$8,296	\$8,544
	Residence Hall - Dorm	6,880	7,018	7,228	7,480	7,704
	Residence Hall – Single Room	7,230	7,374	7,596	7,862	8,098
Board:	Colonel Gold Plus (19 meals per week)	\$4,590	\$4,680	\$4,806	\$4,956	\$5,104
	Colonel Blue Plus	4,110	4,186	4,296	4,428	4,560
	Colonel Gold	4,490	4,580	4,706	4,856	5,002
	Colonel Blue	3,910	3,986	4,096	4,228	4,354
	Senior	2,000	2,042	2,080	2,126	2,190

(Continued on following page)

## Tuition, Fees, Room and Board Charges (continued)

### Master's Programs

	<u>FY2011</u>	<u>FY 2012</u>	<u>FY2013</u>	<u>FY2014</u>	<u>FY2015</u>
<b>GRADUATE (Per Credit Hour) Engineering Programs</b>					
Tuition	\$795	\$811	\$827	\$844	\$870
General University Fee	31	62	64	66	68
Total Cost	<u>\$857</u>	<u>\$873</u>	<u>\$891</u>	<u>\$910</u>	<u>\$938</u>

#### GRADUATE (Per Credit Hour) Education Program

Tuition-Fall/Spring	\$377	\$395	\$403	\$411	\$423
---------------------	-------	-------	-------	-------	-------

#### GRADUATE (Per Credit Hour) MBA Programs

Tuition	\$725	\$740	\$755	\$770	\$794
General University Fee	31	62	64	66	68
Technology Fee	31	-	-	-	-
Total Cost	<u>\$787</u>	<u>\$802</u>	<u>\$819</u>	<u>\$733</u>	<u>\$862</u>

#### GRADUATE (Per Credit Hour) Creative Writing Program

Tuition	\$610	\$622	\$634	\$647	\$647
General University Fee	31	62	64	66	68
Technology Fee	31	-	-	-	-
Total Cost	<u>\$672</u>	<u>\$684</u>	<u>\$698</u>	<u>\$713</u>	<u>\$715</u>

#### GRADUATE (Per Credit Hour) Nursing Program

Tuition	\$490	\$500	\$510	\$520	\$536
General University Fee	60	62	64	66	68
Total Cost	<u>\$550</u>	<u>\$562</u>	<u>\$574</u>	<u>\$586</u>	<u>\$604</u>

### Doctoral Programs

#### GRADUATE (Per Credit Hour) Doctorate of Nursing Program

Tuition	\$695	\$709	\$723	\$737	\$759
Online/Residency Fee	15	15	15	15	15
Total Cost	<u>\$710</u>	<u>\$724</u>	<u>\$738</u>	<u>\$752</u>	<u>\$774</u>

#### GRADUATE (Per Credit Hour) Ed. D. Program

Tuition-Fall/Spring	\$484	\$494	\$554	\$565	\$581
---------------------	-------	-------	-------	-------	-------

## Tuition Comparison, Wilkes and Other Institutions

Tuition and Fees	<u>2011-12</u>	<u>2012-13</u>	<u>2013-14</u>	<u>2014-15</u>	<u>% most recent increase</u>
<b>Wilkes University</b>	<b>\$28,210</b>	<b>\$29,326</b>	<b>\$30,350</b>	<b>\$31,262</b>	<b>3.0%</b>
Bloomsburg University	8,082	8,344	8,582	8,914	3.9%
Drexel University****	34,505	36,090	37,505	47,051	25.5%
Duquesne University	28,671	30,034	31,385	32,636	4.0%
East Stroudsburg University	8,350	8,494	9,005	9,362	4.0%
Elizabethtown College	34,830	36,550	38,200	39,920	4.5%
Fairleigh Dickinson University (Main Campus)	32,973	33,792	34,878	35,880	2.9%
King's College	27,680	29,174	30,310	31,816	5.0%
Kutztown University	8,359	9,072	9,295	9,575	3.0%
Lebanon Valley College	33,200	34,470	35,700	37,470	5.0%
Lock Haven University	8,239	8,564	8,898	9,276	4.2%
Luzerne County Community College (30 cr hrs)	3,150	3,600	4,140	4,590	10.9%
Lycoming College	31,738	32,676	33,756	34,706	2.8%
Mansfield University	8,654	8,926	9,192	9,526	3.6%
Marywood University	28,175	29,380	30,690	31,695	3.3%
Millersville University*****	8,361	8,600	8,866	10,268	15.8%
Misericordia University	25,990	27,230	28,210	29,010	2.8%
Moravian College	33,446	34,484	35,518	37,572	5.8%
Penn State University- University Park***	15,984	16,444	16,992	17,502	3.0%
Penn State Wilkes-Barre***	12,994	13,238	13,354	13,588	1.8%
Rutgers University (New Brunswick)**	12,754	13,073	13,499	13,813	2.3%
Shippensburg University	8,856	9,154	9,448	9,774	3.5%
Susquehanna University	35,860	37,280	38,780	40,350	4.0%
Temple University	13,596	13,596	14,096	14,696	4.3%
University of Delaware*	27,462	28,772	29,932	30,692	2.5%
University of Pittsburgh	16,132	16,590	17,100	17,772	3.9%
University of Scranton	36,042	37,456	38,754	39,956	3.1%
University of the Sciences in Philadelphia	32,148	33,406	34,742	36,096	3.9%
West Chester University	8,275	8,620	8,850	9,144	3.3%

\* Non-resident tuition

\*\* NJ resident

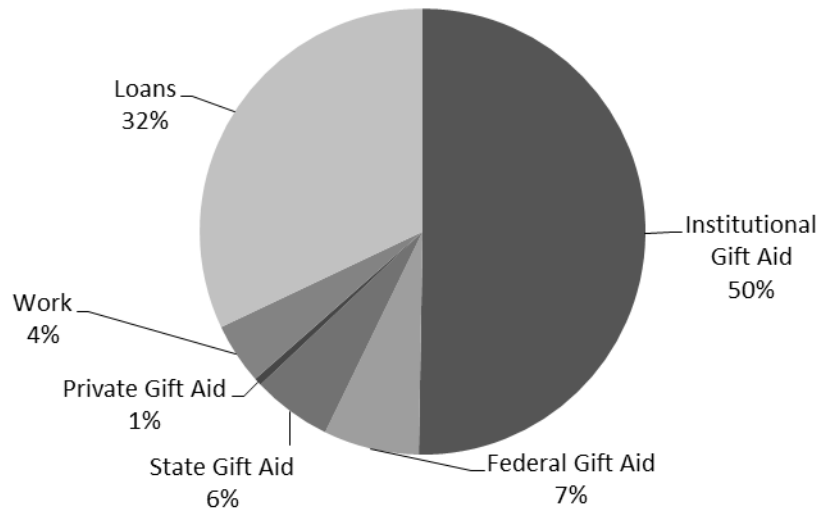
\*\*\* PA resident

\*\*\*\* Effective 2014-15 students are charged per quarter term. Cost shown is for 3 quarter terms.

\*\*\*\*\* Effective 2014-15 students charged per credit hour. Cost shown is for 12 credits.

## Student Financial Aid

### Financial Aid Awarded to Fall 2014 Full-Time Undergraduate Students\* by Source



Percentage of Full-Time Undergraduates* Awarded Some Form of Financial Aid	89%
Percentage of First-Time Full-Time Freshmen Awarded Some Form of Financial Aid	96%
Average Financial Aid Package Awarded to Full-Time Undergraduate Students* (including work study and loans to students)	\$32,419
Percentage of 2014 Bachelor's Degree Recipients Who Borrowed	86%
Estimated Average Indebtedness of 2014 Bachelor's Degree Recipients Who Borrowed	\$38,082
Percentage of 2014 Doctor of Pharmacy (D.Ph.) Degree Recipients Who Borrowed	88%
Estimated Average Indebtedness of 2014 D.Ph. Degree Recipients Who Borrowed	\$90,387

\* Includes first- and second-year students in the School of Pharmacy

**Wilkes Alumni**

**Alumni by Graduation Year**

<b>Graduation Year</b>	<b>Total Graduates</b>	<b>Advanced Degrees</b>	<b>Undergrad Degrees</b>	<b>Undergrad Alumni of Record*</b>	<b>% of Solicitable Undergraduates</b>
<b>1935-1939</b>	353	-	353	16	13.68%
<b>1940-1949</b>	1,183	1	1,182	181	32.50%
<b>1950-1959</b>	2,784	2	2,782	864	49.15%
<b>1960-1969</b>	3,363	20	3,343	2,137	75.91%
<b>1970-1979</b>	5,369	280	5,089	3,610	76.47%
<b>1980-1989</b>	5,441	729	4,712	3,752	82.53%
<b>1990-1999</b>	5,898	1,281	4,617	4,179	91.93%
<b>2000-2009</b>	11,198	6,966	4,232	3,896	92.59%
<b>2010-2014</b>	7,442	5,217	2,225	2,164	97.35%
<b>Total</b>	<b>43,031</b>	<b>14,496</b>	<b>28,535</b>	<b>20,799</b>	<b>81.59%</b>

\* Undergraduate Alumni of Record is comprised of solicitable alumni excluding advanced degrees, deceased, inactive home addresses & those requesting no contact or solicitation.

**Alumni Giving**

	<b>2009-10</b>	<b>2010-11</b>	<b>2011-12</b>	<b>2012-13</b>	<b>2013-14</b>
<b>Undergraduate Alumni of Record</b>	18,710	19,955	20,286	20,336	20,118
<b>Undergraduate Alumni Donors</b>	2,618	2,640	2,765	2,961	2,651
<b>Alumni Giving Rate</b>	14.0%	13.2%	13.6%	13.2%	13.2%

Source: Advancement Division

***Funds Raised***  
**(Cash Basis)**

<b><u>By Source</u></b>	<b><u>FY2013</u></b>	<b><u>FY2014</u></b>
Alumni	\$2,149,696	\$1,320,237
Other	526,008	1,028,167
Foundations	336,467	262,481
Corporation/Business	636,607	399,507
<b>Total</b>	<b><u><u>\$3,648,779</u></u></b>	<b><u><u>\$3,010,392</u></u></b>

<b><u>By Purpose</u></b>	<b><u>FY2013</u></b>	<b><u>FY2014</u></b>
Unrestricted	465,359	408,114
Academic Divisions	263,958	68,945
Public Service	177,526	127,958
Library	3,054	1,593
Physical Plant	2,325	8,858
Student Financial Aid	175,472	175,598
Other Restricted	154,800	260,937
Property	5,100	165,000
Endowment (restricted)	2,302,187	1,675,937
Endowment (unrestricted)	0	5,000
Research	5,250	300
Athletics	93,747	112,152
<b>Total</b>	<b><u><u>\$3,648,779</u></u></b>	<b><u><u>\$3,010,392</u></u></b>

Source: Advancement Division

## FACILITIES

### *Building Inventory – Assignable Square Footage*

<b>Buildings:</b>	<b>Admin</b>	<b>Classrooms, Labs, Galleries, Studios</b>	<b>Faculty Offices</b>	<b>Residence Halls</b>	<b>Other Aux. Buildings</b>	<b>Total</b>
Allan P. Kirby Center	1,800				1,200	3,000
Annette Evans House	1,018					1,018
Barre Hall*				7,553		7,553
Bedford Hall	1,200	2,487	848			4,535
Breiseth Hall	2,000	18,880	10,000			30,880
Capin Hall	971	450	3,756			5,177
Catlin Hall				5,097		5,097
Ceramics Studio		1,800				1,800
Chase Hall	3,973					3,973
Cohen Science Center		57,000	7,100			64,100
Conyngham Hall	1,898					1,898
Darte Center	437		661		9,000	10,098
Darte Hall	975	14,529	4,870			20,374
Doane Hall				3,353		3,353
Evans Hall				41,724	1,421	43,145
Facilities Building	14,000					14,000
Farley Library					45,282	45,282
Fenner Hall					1,150	1,150
Fortinsky Hall				11,718		11,718
Henry Student Center					48,000	48,000
Hollenback Hall	2,978					2,978
Kirby Hall	610	2,031	3,621			6,262
Marts Center	1,000	7,775			46,654	55,429
McCole House					8,300	8,300
Miner/Moat Hall	1,500					1,500
Munson Field House	400	800			38,000	39,200
O'Hop Hall					3,772	3,772
Parking Garage	4,500				104,832	109,332
Passan Hall	9,815					9,815
Pearsall Hall				6,600		6,600
Rifkin Hall				10,000		10,000
Ross Hall				2,792		2,792
Roth Center	12,340					12,340
Roth Residence Hall				18,152		18,152
Schiowitz Hall				11,356		11,356
Sidhu		8,627	5,028		67,345	81,000
Slocum Hall				6,107		6,107
Stark Learning Center	2,127	111,655	14,610			128,392
Sterling Hall				5,355		5,355
Sturdevant Hall				7,329		7,329

(Continued on following page)



**Building Inventory (continued)**

<b>Buildings:</b>	<b>Admin</b>	<b>Classrooms, Labs, Galleries, Studios</b>	<b>Faculty Offices</b>	<b>Residence Halls</b>	<b>Other Aux. Buildings</b>	<b>Total</b>
Sullivan Hall				5,852		5,852
University Towers				103,214	66,786	170,000
Waller North & South				18,771		18,771
Weckesser Hall & Annex	10,700		6,850		1,500	19,050
Weiss Hall				4,487		4,487
30 West River St.					5,802	5,802
70-72 Wright St.					7,200	7,200
141 S Main St	17,242					17,242
245 South River St			2,500		6,875	9,375
280 South River St					17,280	17,280
321-323 South River St.*				5,400		5,400
325-327 South River St.*				5,965		5,965
339 South River St.*				3,164		3,164
<b>Total</b>	<b>91,484</b>	<b>226,034</b>	<b>59,844</b>	<b>283,989</b>	<b>480,399</b>	<b>1,141,750</b>

\* Building is offline

Source: Capital Projects & Planning

## ***Eugene S. Farley Library***

### **Fall 2014 Resources:**

#### **Print Collection**

Total Books	212,671
Book Additions	472
Total Bound Periodicals	8,573
Total Unbound Periodicals	12,267
Current Print Subscriptions	84
Microformats	16,023

#### **A-V Collection**

DVD's	1,231
VHS	831
CD Books	96

#### **Digital Resources**

Online Journals	50,000
Licensed Databases	54
E Books	7,830

#### **Expenditures (\$)**

Books & Monographs	20,828
Periodicals, subscriptions, electronic resources	354,836
A-V Resources	264

#### **Usage Statistics**

Total Circulations	13,545
Turnstile Count	258,973
Interlibrary Loans	1,876
Information Literacy Classes	165
Reference Questions	1,961

#### **Computers**

Desktops Available	55
Laptops Available	14
Laptop Loans	4,162
Instructional Desktops	4
Ipads	39

#### **Staff**

Professional Librarians	5
Technicians	10

## ***Computing Inventory***

### **Computers Available for Student Use**

Closed labs, classrooms, clubs 687

Open access labs 99

**Computers Available for Administrative & Faculty Use** 1,088

**Total** **1,874**

**Servers** 113

**Storage** 32 Terabytes

**Network Printers** 128

Source: Information Technology Services

## **ACCREDITATIONS**

### **Regional:**

Middle States Association of Colleges and Schools

### **Professional:**

American Chemical Society

Commission on Collegiate Nursing Education

Engineering Accreditation Commission

Accreditation Board of Engineering and Technology

Accreditation Council for Business Schools and Programs

Accreditation Council for Pharmaceutical Education

## **GLOSSARY**

### **Census Date**

The completion of six weeks of classes

### **First-Generation Student**

A student for whom neither parent graduated from a 4-year institution

### **First-Professional Program**

The First-Professional Program requires the completion of the academic requirements to begin practice in the profession; at least two years of college work prior to entering the program; and a total of at least six academic years of college work to complete the degree program, including prior required college work plus the length of the professional program itself.

### **First-Professional Student**

A student enrolled in the Pharmacy Program

### **First-Time Freshman**

An entering freshman who has never attended any college. Includes students enrolled in the fall term who attended for the first time in the prior summer term. Includes students who entered with advanced standing (college credits earned before graduation from high school).

### **FTE (Full-Time Equivalent)**

A full-time Undergraduate, Graduate, or First-Professional Student is equivalent to one FTE  
Part-time Undergraduate and First-Professional FTE is calculated by dividing part-time registered credits by fifteen  
Part-time Graduate FTE is calculated by dividing part-time registered credits by nine

### **Full-time Student**

Undergraduate and First-Professional - A student enrolled for twelve or more semester credits each term  
Graduate - A student enrolled for nine or more semester credits

### **Graduate Student**

A student who holds a bachelor's or first-professional degree, or equivalent, and is taking courses at the post-baccalaureate level

### **Nonresident Alien**

A person who is not a citizen or national of the United States and who is in this country on a visa or temporary basis and does not have the right to remain indefinitely

### **Part-time Student**

Undergraduate and First-Professional - A student enrolled for less than twelve credits  
Graduate - A student enrolled for less than nine credits

### **Tenure**

Status of a personnel position, or a person occupying a position or occupation, with respect to permanence of the position

### **Tenure Track**

Status of personnel positions that lead to consideration for tenure

### **Undergraduate Student**

A student enrolled in a four-year bachelor's degree program