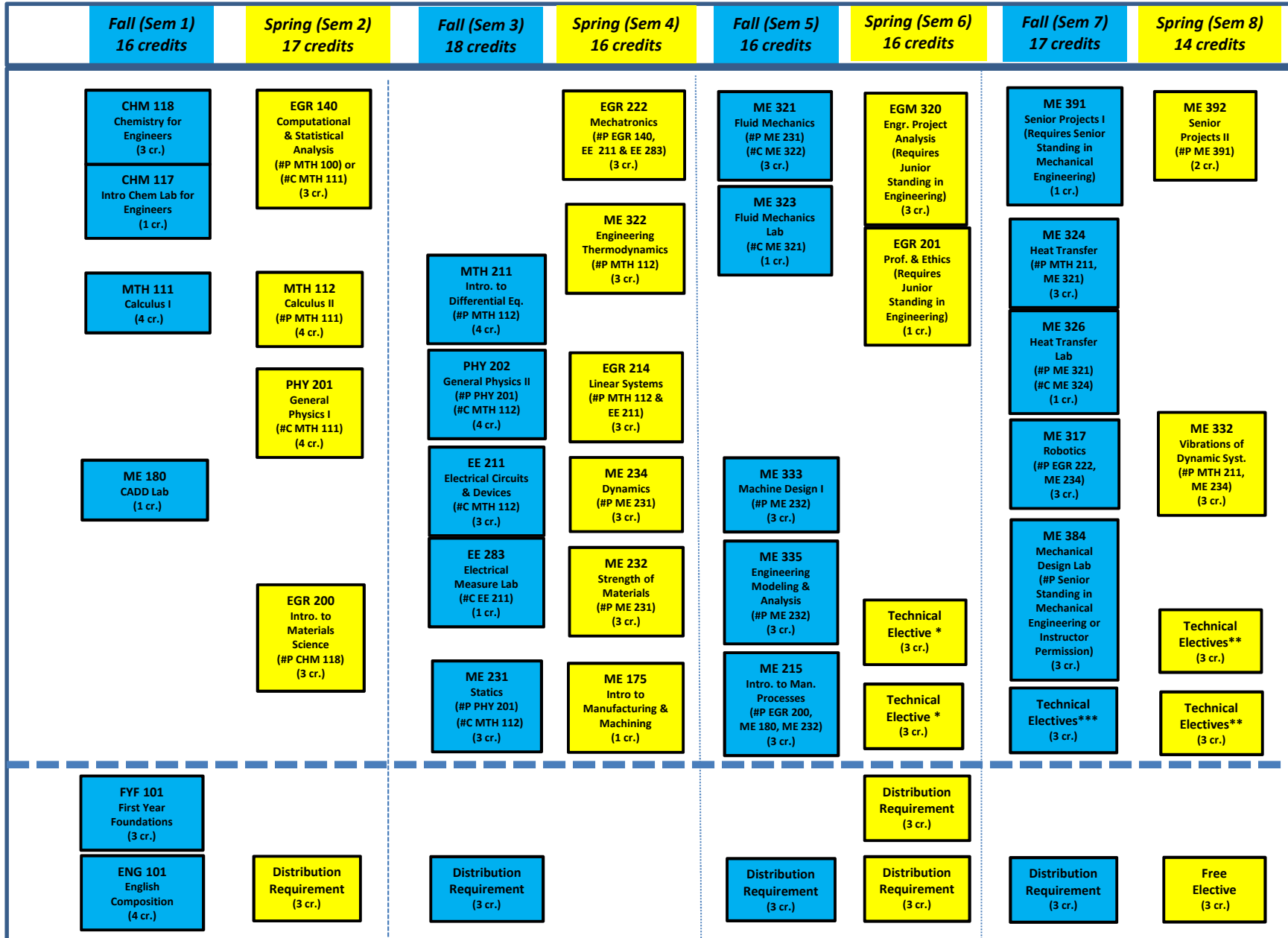


Wilkes University Curriculum Flowchart: Mechanical Engineering (130 Credit Hour Program)



#C – Co-requisite – must be taken concurrent, or after

#P – Pre-requisite – course(s) which a student must pass before taking listed course

* An engineering co-op may be substituted for up to six credits of technical electives typically during the sixth semester & requires sophomore standing.

** Technical Electives may be selected from advisor approved science, math, or engineering courses numbered 200 or above