

SCHOOLS & HOMES
IN EDUCATION



SHine

• After School Program
• of Luzerne County
• at Wilkes University



2018-2019
ANNUAL REPORT

CONTENTS

- 1 Director's Message
- 2 SHINE Elementary School Centers
- 4 SHINE Middle School Centers
- 6 Outcomes
- 10 STEM Olympiad
- 12 School Supply Drive
- 13 SHINE Program Bids Fond Farewell to Supporters
- 14 By the Numbers
- 15 Financials
- 16 SHINE Administrative Staff
- 19 SHINE Advisory Board



DIRECTOR'S MESSAGE

SHINE Fosters and Supports Students' Excitement About Learning

SHINE's after-school centers provide our over 500 students with transformative learning opportunities that help them reach their full potential. SHINE students develop strong social skills, strengthen their work habits and raise their grades, improve school-day attendance, explore career pathways and learn 21st century skills. Perhaps most importantly, they get excited about learning.

SHINE gives parents peace of mind, knowing their children are safe, supported, enjoying a nutritious meal, finishing homework and having fun while participating in incredible learning opportunities. We continue to provide information to our families which supports them in their parenting.

We work closely with our partner school districts to ensure the programs are designed to meet their students' needs. This year in spring 2019, we have added a social emotional component to our program. This will aid students in managing emotions, feeling and showing empathy, setting and achieving positive goals, maintaining positive relationships and making responsible decisions.



As always, we are grateful to Wilkes University which serves as our academic home, to the dedicated legislators who secure support for our program and to our SHINE school districts and community partners. It takes a village! By partnering to provide the best opportunities for student success, we prepare our students to be our future leaders. We invite you to visit a SHINE center and see our students' excitement first hand.

Carol Nicholas
Director, SHINE of Luzerne County
at Wilkes University

SHINE Elementary School Centers Leverage Hands-On Activities

Learning becomes fun through SHINE’s emphasis on hands-on learning. Its after-school curriculum develops the 21st-Century skills of collaboration and teamwork, creativity and imagination, critical thinking and problem solving. Here

are highlights from units in the elementary school centers taught during the 2018-2019 academic year.



Make Money Make Cents

Students in Wilkes University’s Sidhu School of Business and Leadership taught first through third grade students in the SHINE center at the Heights-Murray Elementary School how to “Make Money Make Cents.” SHINE students learned how to count change and identify how much each bill is worth, while learning the value of money through fun and interactive activities led by the Wilkes visitors. Students also participated in hands-on activities such as modified life-size monopoly, coin twister and a bingo money race.



Dash and Dot Robotics

The Dash and Dot robots learn-to-code curriculum helped SHINE students develop essential 21st-Century skills. Through computer coding, students learn to see the world through the lens of computational thinking, which enables students to decompose problems, recognize patterns and understand abstract concepts. Coding also is a new type of literacy that prepares students for the careers of tomorrow. Whether it's a career in graphic arts or financial consulting, more occupations require employees to have at least a fundamental understanding of reading and writing computer code. Coding also prepares students for successful and high-demand careers in STEM fields.

Ideas and Inventions Unit

The Ideas and Inventions Module consisted of four sequential investigations that promoted student creativity and inventiveness. Each investigation provided valuable science content while introducing a conventional technique for revealing the unseen. Students completed activities such as rubbings of leaves to view textures, carbon printing, color writing to investigate hidden pigments in water-soluble ink and observing mirror images through reflecting.



Luzerne County
SHINE
Elementary
Centers



Heights-Murray
Lee Park
Maple Manor
Nanticoke
State Street

“The United Way of Wyoming Valley is a proud supporter of the SHINE program and has been since its launch in 2015. Not only does SHINE make learning fun, SHINE makes education transformative. SHINE’s unique approach to engaging both students and families has the ability to change the lives of children and prepare them for a brighter future.”

– Bill Jones, President and Chief Executive Officer,
United Way of Wyoming Valley

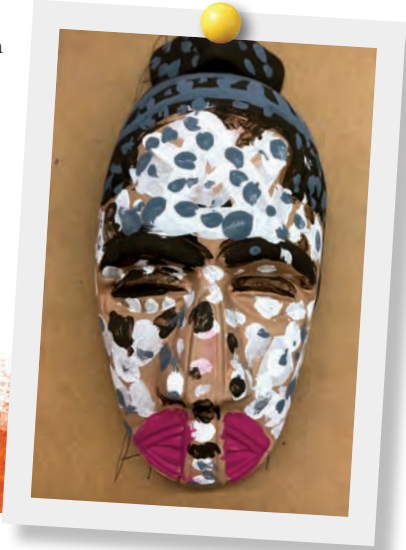
SHINE Middle School Centers Celebrate Culture, Creativity and Hands-On Learning

SHINE’s STEAM-based curriculum emphasizes learning that builds skills in science, technology and math while also sharing learning experiences incorporating the arts. The following examples of units taught in SHINE’s middle-school centers during the 2018-2019 school year reflect this approach.



African American Read-in Project

The National African American Read-In Day was observed in February at the SHINE after-school center at Wilkes-Barre Area Career and Technical Center. Students from Wilkes University’s Office of Diversity Initiatives visited the center and read from the book, “We Could Be Brothers,” by Derrick Barnes. The National African American Read-In is the nation’s oldest event dedicated to diversity in literature. It was established in 1990 by the Black Caucus of the National Council of Teachers of English to make literacy a significant part of Black History Month.



Following The African Bantu Migration

The history of the migration of the Bantu people in Africa was brought to life in the present for SHINE middle-school students in a six-week unit. Students read maps of the African migration, learned the reasons for the movement and acquired new vocabulary words to describe politics, migration, culture and farming. Highlights of the unit included learning basic words in the Swahili language culminating in students translating basic phrases such as “I am hungry” and introducing themselves in Swahili. Each student also created a clay tribal mask that incorporated different symbols used by the Bantu.

Culinary Unit

SHINE students donned chef’s hats while expanding their math and science skills through a culinary unit. Students learned the importance of food safety and how cross contamination occurs during this unit which also emphasized everyday life skills. They were exposed to the basics of baking while learning proper eating habits. Students then were able to try their hand at baking and learned how to read recipes that included cinnamon rolls, pizza, brownies and homemade mozzarella sticks. Utilizing technology, students also played culinary games.

“The SHINE experience for our students has been phenomenal! The students connect real-world experiences to the areas of science, technology, engineering, and math with a focus on careers in these areas that are considered of high priority as many of these positions go unfilled in our workforce.”

– Ronald J. Grevera, Jr. Ed.D.
Superintendent, Greater Nanticoke Area School District

Meeting King Tut

Through the study of history, children gain an understanding of the present. In the spring 2019 term, SHINE students learned about Tutankhamen, known as “The Boy Pharaoh.” Students investigated Egyptian geography and politics, learned about agriculture along the Nile and studied the pyramids. While considering the question, “How did Tut Die?,” students were introduced to Egyptian hieroglyphics and learned to write their names using the ancient characters. They also created an Egyptian collar using a paper plate, gold paint and multi-colored stones and completed a full-size rendition of Tut’s death mask. The unit concluded with painting a clay-baked frieze which displayed images of hieroglyphics and Egyptian figures located on the walls of Tut’s burial chamber. Items were displayed at parents night.

Luzerne County SHINE Middle School Centers



Wilkes-Barre Career and Technical Center

Includes students from middle-level grades at Heights-Murray, GAR, Hanover Memorial Elementary, Hanover High School, Nanticoke Elementary Center, Nanticoke High School and Pittston Intermediate Center.

Hazleton Area Career Academy

Includes students from middle-level grades at Maple Manor Elementary School.

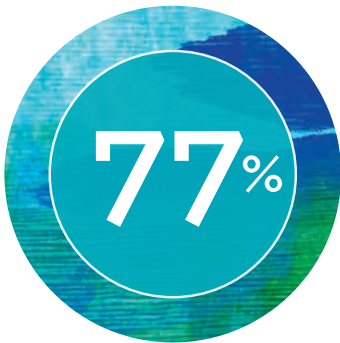
Note: The middle-school center at West Side Career and Technical Center closed at the end of academic year 2017-2018. Some of those students have opted to attend Wilkes-Barre Career and Technical Center.

OUTCOMES

Data Reflects Positive Impact of SHINE On Students

SHINE of Luzerne County at Wilkes University continues to make a positive difference for its students – not only during the hours they spend in the after-school centers, but also in the classroom during the school day. The Institute for Public Policy and Economic Development at Wilkes University tested and surveyed students and gathered feedback from classroom teachers to assess SHINE’s effectiveness. The data confirmed that attending SHINE also improves students’ overall performance and interest in education.

Grades Spell Success



of SHINE students achieved a **final grade of B or higher in science**



of SHINE students achieved a **B or higher in math**

Improvement on Standardized Tests

On the EasyCBM standardized reading comprehension test, students averaged a **6 percentage-point improvement during the school year.**

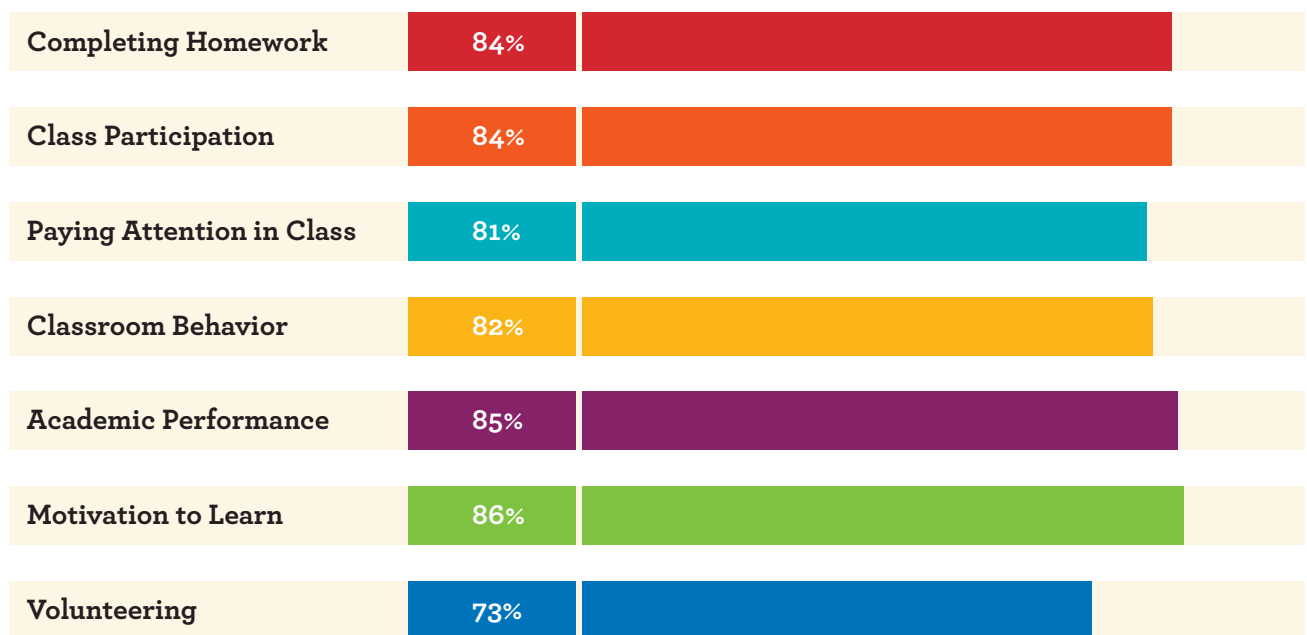


On math assessments, that was an average **gain of 11 percentage points.**



Making a Positive Impact in the Classroom

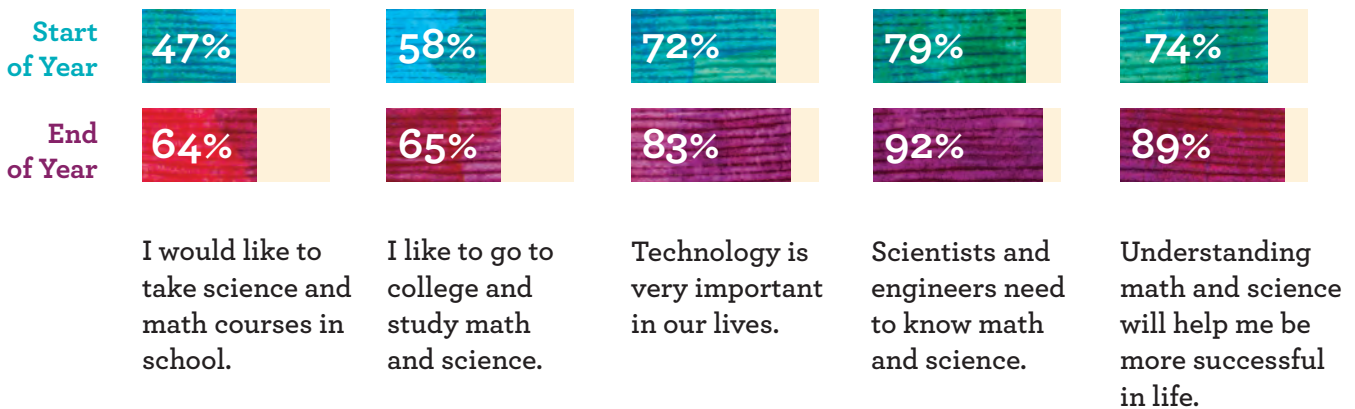
Student behavior and academic performance can be positively impacted by participation in SHINE. Classroom teachers assessing their students over the course of a year can observe changes that may be attributable to SHINE. The following survey of classroom teachers shows the percentage of all SHINE students who progressed or maintained (either improved or did not need to improve) in certain attitudes and behaviors over the course of a school year.



OUTCOMES

Encouraging STEM Careers

SHINE continues to provide educational experiences that will prepare students for careers of the future. STEM fields – science, technology, engineering and math – are emphasized since it is projected that more future career opportunities will exist in those fields. The following survey responses reflect the impact of SHINE on students’ understanding of STEM fields and their interest in studying them in the future.



“As a nationally recognized after-school program, SHINE of Luzerne County delivers innovative educational resources to our public schools that creates an after-school environment where students improve their academic performance and where families become more involved in providing the very best educational opportunities to the children of northeastern Pennsylvania.”

– Sen. John Yudichak

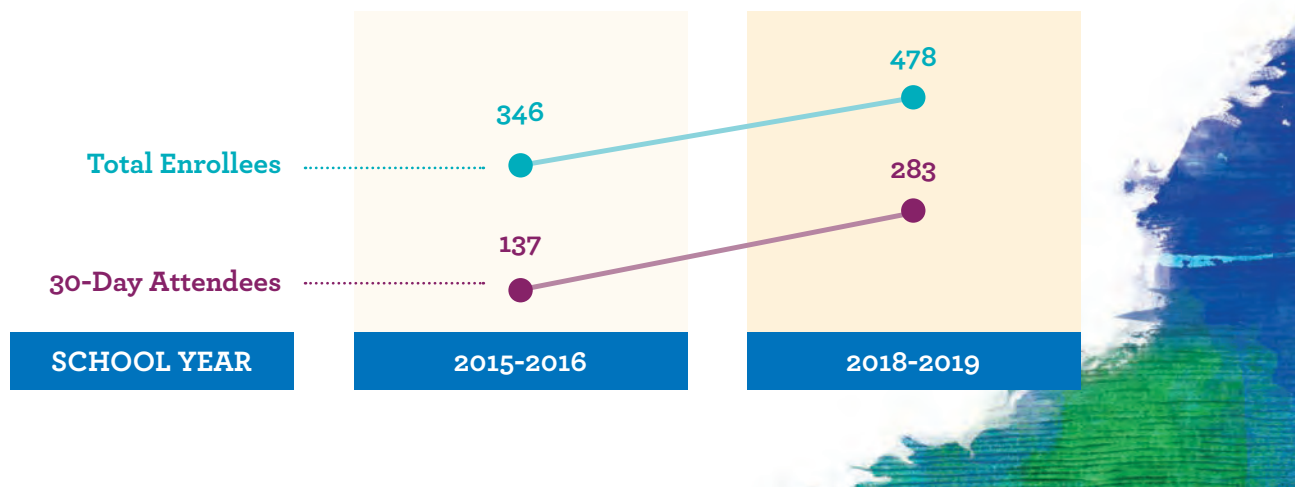


“The SHINE program has been a tremendous asset to our school communities and continues to add stability and value to the educational experience for students that need some additional assistance. In addition to increased school attendance and academic achievement of the student participants, they are also getting the opportunity to learn in a variety of real-world environments and gaining exposure to career and technical school resources that can help them plan for their future.”

– Dr. Anthony Grieco, Executive Director, Luzerne Intermediate Unit 18

SHINE Enrollment and Attendance Continues to Be Steady

Regular attendance at SHINE supports the positive impact from the program for students. Rates of SHINE enrollment and attendance continue to be strong. Although attendance numbers in 2018-2019 were impacted by the closing of the middle-school program at West Side Career and Technical Center, increases in enrollment at other centers helped to offset that number and program enrollment remained strong. Since SHINE’s first year of operation in 2015-2016, the program has seen **overall enrollment grow by 28 percent** and 30-day program attendance **has increased by 106 percent**.



SHINE Caps Year With First STEM Olympiad

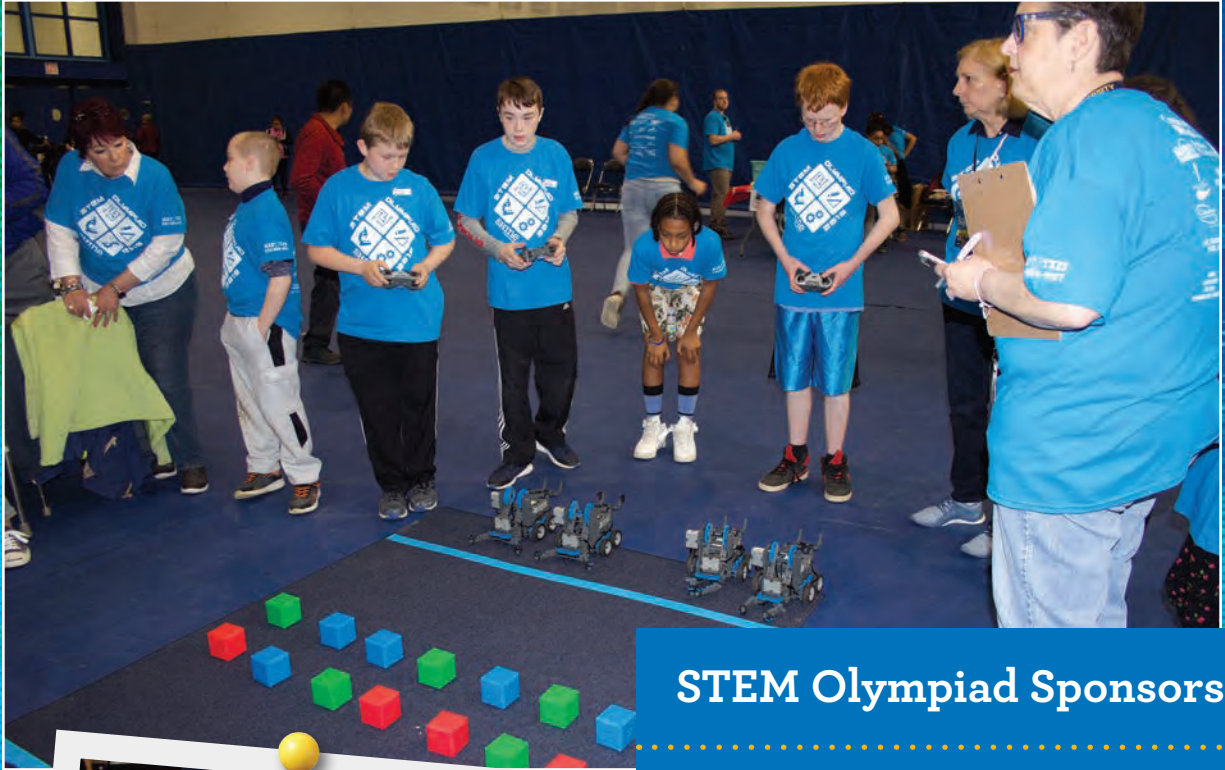
Students became Olympic competitors for the day as SHINE capped its 2018-2019 year with its first STEM Olympiad.

Held on May 11 in Wilkes University's Arnaud C. Marts Sports and Conference Center, the event featured fun challenges that promoted the 21st Century learning skills of collaboration, communication, flexibility and leadership that are the basis of SHINE's curriculum. Sixty parents and family members attended the event to watch 120 students in grades 1 through 8 compete in events.



The students participated in teams in several STEM-based challenges including an egg drop, robotics and coding challenge, rain gutter regatta and a catapult challenge. Events were judged by a celebrity team that included Kristina Shalhoup, WBRE weekend weather anchor and reporter, Rhonda Rabbitt, dean of the School of Education at Wilkes University, Robert Taylor, faculty of practice and chair of electrical engineering at Wilkes University, and Matthew Nicholas, mechanical engineer with Power Engineering.





STEM Olympiad Sponsors

GOLD Sponsor: Community Bank

SILVER Sponsors: The Luzerne Foundation, State Sen. John T. Yudichak, Greater Hazleton Can Do, Nicholas Trucking, Wilkes University, J.H. Williams & Co., LLP, United Way of Wyoming Valley, Motor Transportation, Unico and Kazimierz Pulaski Club

BRONZE Sponsors: Attorney Allan Kluger and Sue Kluger, Anne Skleder, Children's Service Center

OTHER sponsors: Herra's, Dairy Queen, The Grill, Marquis Art and Frame, Sky Zone, Movies14, Josie's Italian Ice, Wilkes-Barre/Scranton Penguins, Wyoming Valley Sanitary Authority, Gerrity's Supermarkets and Donut Connection, Exeter.



School Supply Drive Draws Community Support for SHINE

A school supply drive sponsored in summer 2019 by Sen. John Yudichak garnered an estimated \$3,000 worth of school and craft supplies for SHINE’s seven after-school centers. Individuals, businesses and organizations from throughout the community participated in the collection. They contributed 450 notebooks, 307 boxes of crayons, 239 bottles of glue, 202 packs of pencils and 115 packs of pens. Other items collected include a wide range of arts and crafts supplies, Legos, Lincoln Logs and additional supplies that can be used in creating STEM-based projects at the SHINE centers.

SHINE Director Carol Nicholas said, “Thanks to the generosity of Sen. Yudichak and his constituents, students at the SHINE centers are starting the new academic year equipped with great supplies. The contribution of needed supplies helps SHINE to make good use of resources and enhances the activities we provide for our students.”



Clockwise from left:

SHINE staff receive school supply contributions from WBRE.

The staff from PA CareerLink collected supplies for the SHINE drive.

Sen. John Yudichak, second from left, and SHINE Director Carol Nicholas, third from left, appeared on “PA Live” to promote the school supply drive.

SHINE Program Bids Fond Farewell to Supporters

Children, teachers and staff in SHINE of Luzerne County bid a fond farewell during the 2018-2019 school year to some of the program's earliest and most valued supporters.

A special event with a holiday theme was held in December 2018 at the Barnes & Noble at Public Square in Wilkes-Barre. It provided an opportunity for SHINE students to say thank-you to Congressman Lou Barletta, who would be leaving office. Congressman Barletta had partnered with Sen. John Yudichak in 2015 to bring the SHINE program to schools in Luzerne County. At the event, the congressman joined the senator to read the children's book "We Saved the Bees and Butterflies." The book was written by Caroline Jones to benefit the SHINE program. Following story time, youngsters shared their thanks



with Barletta for all he had done to support SHINE since its inception. The event ended with cookie decorating and refreshments.

It was again time to say good-bye in May 2019 to two Wilkes University administrators who supported SHINE as part of the University's commitment as the program's educational partner. A special event was held to say thank you to Wilkes President Patrick F. Leahy and to Dr. Anne Skleder, University senior vice president and provost, as both administrators left the University for new opportunities.

Above: SHINE hosted a special event to thank Wilkes University administrators. Pictured at the event from left are Deanna Drako, assistant director of middle school programs, Marlon Pitts, assistant director of elementary and home visitor programs, Rep. Eddie "Day" Pashinski, Wilkes Senior Vice President and Provost Anne Skleder, University President Patrick F. Leahy, SHINE Director Carol Nicholas and Eryn Harvey, constituent services representative for Sen. John Yudichak.

Left: SHINE recognized former Congressman Lou Barletta for his support of the program. Pictured from left are Anne Skleder, Wilkes University Senior Vice President and Provost, Mike Wood, Wilkes' assistant to the president for external affairs, Congressman Barletta, SHINE Director Carol Nicholas and Deanna Drako, SHINE assistant director of middle school programs.



SHINE BY THE NUMBERS



478
students
participated



36,180
meals served



620
family members
attended Family Nights



36
weeks of
instruction



455
hours of
homework help
provided among
all SHINE centers

940

pre-kindergarten and kindergarten home visits



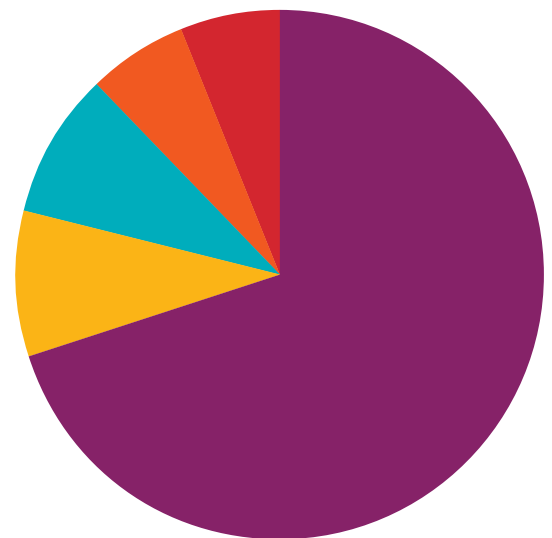
FINANCIALS

FUNDING SOURCE	TOTAL AWARD	FUNDING PERIOD
21st Century Community Learning Centers Cohort 8	\$2,397,798	2016-2022
21st Century Community Learning Centers Cohort 10	\$2,000,000	2019-2024
Pennsylvania Job Training and Education Programs 1	\$300,000	2018-2020
Pennsylvania Job Training and Education Programs 2	\$100,000	2018-2019
Pennsylvania Job Training and Education Programs 3	\$300,000	2019-2020
United Way Wyoming Valley	\$140,000	2019-2021
TOTAL	\$5,237,798	



EXPENSES

Salaries & Benefits	\$680,828	70%
Curriculum Development (instructional supplies)	\$83,981	9%
Program Operations (busing, meals, activities, family night expenses)	\$86,948	9%
Administrative Operations (office supplies, equipment, communications, staff recruitment, training)	\$62,317	6%
Data Collection & Outcomes Reporting	\$60,000	6%
TOTAL	\$974,074	100%



Dedicated SHINE Teachers and Home Visitors Make Learning Fun

Behind the smiling faces of SHINE students enjoying learning activities are more than 60 teachers, assistants and home visitors. These dedicated professionals lead the activities and deliver lessons that are making a difference in the lives of nearly 500 Luzerne County students enrolled in SHINE. From designing imaginative lessons about King Tut and the Bantu tribes of Africa to stirring up some recipes that help to teach math skills and programming computers, SHINE teachers are helping their students to be excited about learning every day.





SHINE ADMINISTRATIVE STAFF

Carol Nicholas, M.A., *Director*

Deanna Drako, MBA, *Assistant Director of Middle School Programs*

Marlon Pitts, *Assistant Director of Elementary and Home Visiting Programs*

Erin Maloney, *Family Resource Coordinator*

Carrie Jackson, *Administrative Assistant/Enrollment*

Michael Morrison, *Financial Coordinator*

Katie Lykon, *Office Assistant*



SHINE ADVISORY BOARD

The Hon. William H. Amesbury
Luzerne County Court

Charles Barber
Luzerne Foundation

Congressman Lou Barletta
United States Congress

Lynn Evans Biga
Luzerne County Head Start

Gene Brady
*Commission on Economic
Opportunity*

Michael Brewster
Mount Zion Baptist Church

Don Brominski
UGI

Jayne Ann Bugda
PA Homepage/WBRE/WYOU

Ida L. Castro, J.D.
*The Commonwealth Medical
College*

Barbara Conway
*Jim Thorpe Area School District
(retired)*

Jeanne Conhan
Hazleton Area School District

Bob Curry
Hazleton Integration Project

Steve Daniloff
WBRE, General Manager

Linda DeCosmo
Hazleton Area School Board

Jennifer Deemer
United Way of Wyoming Valley

Eric Esoda
NEPIRC

Joanne Gabriele
Hazleton YMCA

Wico Van Genderen
*Greater Wilkes-Barre Chamber of
Commerce*

Nettie Ginocchetti
NEPA Alliance

Dr. Ron Grevera
Nanticoke Area School District

Dr. Anthony Grieco
*Luzerne County Intermediate
Unite No.18*

Mark Grochocki
*Chief of Staff at Senate of PA -
Senator John T. Yudichak*

Cal Herring
*Work Based Learning Coordinator
Business and community liaison
Greater Hazleton CAN DO,
Business Community*

Michael Hopkins
Children's Service Center

Aaron Kaufar
State Representative

Dr. Rochelle Koury
Wilkes-Barre Area School District

Mr. Nathan Barrett
Hanover Area School District

Dr. Gary Lawler
Penn State Hazleton

Dr. Patrick Leahy
Wilkes University

Dr. Thomas Leary
*Luzerne County Community
College*

Frank Majikes
*Wilkes-Barre Area Vocational
Technical School*

Mary R. Malone
*Greater Hazleton Chamber of
Commerce*

Robert Mitvalsky
Medico Industries

Amanda Modrovsky
Wilkes University

Maura Modrovsky
King's College

Kevin O'Donnell
CAN DO

Teri Ooms
*The Institute for Public Policy
and Economic Development*

Eileen Panzarella
Pathway To Recovery

Honorable Fred A. Peirantoni III
Luzerne County Court

Dr. Rhonda Rabbit
Wilkes University

Lindsey Riddell
Misericordia University

Larry Singleton
Wilkes-Barre NAACP

Eugenio Sosa
Hazleton Integration Project

James Thomas
Wilkes-Barre Family YMCA

Dr. Walteen Truly
Penn State Wilkes-Barre

Dr. Brian Uplinger
Hazleton Area Superintendent

Lucyann Vierling
Wayne Pike Workforce Alliance

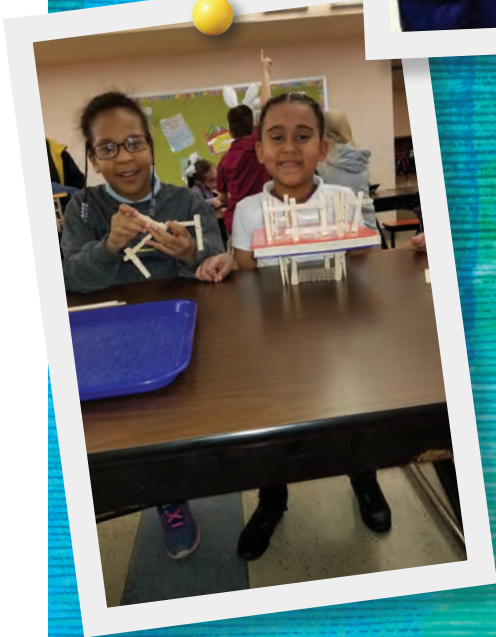
Pat Ward
United Way of Greater Hazleton

Dr. Terese Wignot
Wilkes University

Michael Wood
Wilkes University

Stefanie M. Wolownik, M.S.
*Wyoming Valley Alcohol & Drug
Services*

Senator John Yudichak
Commonwealth of Pennsylvania







Wilkes University

For more information, please contact:

(570)408-3326 | 84 W. South St., Wilkes-Barre, PA 18766

 @SHINEluzerne

SCHOOLS & HOMES
IN EDUCATION



- After School Program
- of Luzerne County
- at Wilkes University