



*Office of Institutional Research — November 2015*

# 2015–16 FACT BOOK



## Table of Contents

<b>STUDENTS</b> .....	<b>1</b>
Fall Enrollment Trends .....	1
Fall Enrollment by Gender.....	2
Fall Enrollment by Ethnicity .....	3
Fall Enrollment Percentages .....	5
Fall Enrollment by Primary Major.....	6
Fall Enrollment by Residence .....	10
Fall Enrollment by Age Category .....	10
Fall Enrollment by State of Origin.....	11
International Students .....	12
First Generation College Students from Entering Freshman Class .....	12
Programs Offered.....	13
Degrees Granted by Department and Major .....	14
Admissions.....	16
Average SAT Scores for First-time Full-time Freshmen.....	16
Undergraduate Retention of First-time Full-time Freshmen .....	17
Graduation Rates for First-time Full-time Freshmen .....	18
Student Credit Hours by Department and Subject.....	19
Student Development .....	22
Leadership Institute .....	23
University College Programs and Services.....	23
Civic Engagement.....	24
Career Placement of 2014 Bachelor’s Graduates .....	25
Athletics.....	26
<b>FACULTY AND STAFF</b> .....	<b>27</b>
Staff by Category and Gender.....	27
Faculty by Gender and Tenure Status .....	28
Part-time Faculty .....	29
Full-time Faculty by Department.....	29
Full-time Faculty Degrees.....	30
Faculty and Staff by Ethnicity .....	31

<b>ORGANIZATIONAL CHARTS.....</b>	<b>32</b>
Administrative .....	32
Finance and Support Operations .....	33
Provost .....	34
Enrollment Services.....	35
Information Technology Services .....	36
Library.....	37
Advancement .....	38
Student Affairs .....	39
Marketing/Communications .....	44
<b>FINANCES.....</b>	<b>45</b>
Statement of Activities.....	45
Endowment and Other Long-Term Investments .....	46
Tuition, Fees, Room and Board Charges .....	47
Tuition Comparison, Wilkes and Other Institutions.....	48
Student Financial Aid.....	49
Wilkes Alumni .....	50
Alumni by Graduation Year .....	50
Alumni Giving.....	50
Funds Raised .....	51
<b>FACILITIES .....</b>	<b>52</b>
Building Inventory – Assignable Square Footage .....	52
Eugene S. Farley Library .....	54
Computing Inventory .....	55
<b>ACCREDITATIONS.....</b>	<b>55</b>
<b>GLOSSARY.....</b>	<b>56</b>

# STUDENTS

## *Fall Enrollment Trends*

As of official census date

	<u>2011</u>	<u>2012</u>	<u>2013</u>	<u>2014</u>	<u>2015</u>
<b>Undergraduate</b>					
Full-time	2,023	2,095	2,181	2,217	2,254
Part-time	188	207	207	143	167
<b>Total</b>	<b>2,211</b>	<b>2,302</b>	<b>2,388</b>	<b>2,360</b>	<b>2,421</b>
FTE	2,089	2,165	2,251	2,273	2,321
<b>Graduate</b>					
Full-time	248	183	201	197	198
Part-time	2,425	2,260	1,788	1,716	2,149
<b>Total</b>	<b>2,673</b>	<b>2,443</b>	<b>1,989</b>	<b>1,913</b>	<b>2,347</b>
FTE	1,332	1,221	1,011	973	1,225
<b>First-Professional</b>					
Full-time	276	285	288	288	284
Part-time	3	0	0	1	1
<b>Total</b>	<b>279</b>	<b>285</b>	<b>288</b>	<b>289</b>	<b>285</b>
FTE	277	285	288	288	284
<b>Total</b>					
Full-time	2,547	2,563	2,670	2,702	2,736
Part-time	2,616	2,467	1,995	1,860	2,317
<b>Total</b>	<b>5,163</b>	<b>5,030</b>	<b>4,665</b>	<b>4,562</b>	<b>5,053</b>
FTE	3,697	3,671	3,550	3,534	3,830

## **Fall Enrollment by Gender**

As of official census date

	<u>2011</u>	<u>2012</u>	<u>2013</u>	<u>2014</u>	<u>2015</u>
<b>Undergraduate Students</b>					
Male Full-time	1,024	1,074	1,157	1,173	1,184
Female Full-time	<u>999</u>	<u>1,021</u>	<u>1,024</u>	<u>1,044</u>	<u>1,070</u>
Total	<u>2,023</u>	<u>2,095</u>	<u>2,181</u>	<u>2,217</u>	<u>2,254</u>
Male Part-time	96	110	105	69	77
Female Part-time	<u>92</u>	<u>97</u>	<u>102</u>	<u>74</u>	<u>90</u>
Total	<u>188</u>	<u>207</u>	<u>207</u>	<u>143</u>	<u>167</u>
<b>First Professional Students</b>					
Male Full-time	107	114	111	114	105
Female Full-time	<u>169</u>	<u>171</u>	<u>177</u>	<u>174</u>	<u>179</u>
Total	<u>276</u>	<u>285</u>	<u>288</u>	<u>288</u>	<u>284</u>
Male Part-time	1	0	0	0	1
Female Part-time	<u>2</u>	<u>0</u>	<u>0</u>	<u>1</u>	<u>0</u>
Total	<u>3</u>	<u>0</u>	<u>0</u>	<u>1</u>	<u>1</u>
<b>Graduate Students</b>					
Male Full-time	111	86	85	84	99
Female Full-time	<u>137</u>	<u>97</u>	<u>116</u>	<u>113</u>	<u>99</u>
Total	<u>248</u>	<u>183</u>	<u>201</u>	<u>197</u>	<u>198</u>
Male Part-time	696	648	512	506	498
Female Part-time	<u>1,729</u>	<u>1,612</u>	<u>1,276</u>	<u>1,210</u>	<u>1,651</u>
Total	<u>2,425</u>	<u>2,260</u>	<u>1,788</u>	<u>1,716</u>	<u>2,149</u>
<b>Total University</b>					
Male Full-time	1,242	1,274	1,353	1,371	1,388
Female Full-time	<u>1,305</u>	<u>1,289</u>	<u>1,317</u>	<u>1,331</u>	<u>1,348</u>
Total	<u>2,547</u>	<u>2,563</u>	<u>2,670</u>	<u>2,702</u>	<u>2,736</u>
Male Part-time	793	758	617	575	576
Female Part-time	<u>1,823</u>	<u>1,709</u>	<u>1,378</u>	<u>1,285</u>	<u>1,741</u>
Total	<u>2,616</u>	<u>2,467</u>	<u>1,995</u>	<u>1,860</u>	<u>2,317</u>

## Fall Enrollment by Ethnicity

As of official census date

	<u>2011</u>	<u>2012</u>	<u>2013</u>	<u>2014</u>	<u>2015</u>
<b>Undergraduate Students</b>					
<b>Full-time</b>					
White	1,555	1,679	1,679	1,627	1,636
American Indian/Alaskan	3	2	4	3	9
Asian	5	53	59	48	66
Black	71	77	73	68	84
Hawaiian/Pacific Island.	0	1	3	3	3
Hispanic	63	75	99	132	142
Non-Resident Alien	56	101	163	196	195
Two or more races	44	58	56	94	84
Unidentified	181	49	45	46	35
Total Full-time	<u>2,023</u>	<u>2,095</u>	<u>2,181</u>	<u>2,217</u>	<u>2,254</u>
<b>Part-time</b>					
White	102	120	148	104	113
American Indian/Alaskan	0	0	0	0	0
Asian	1	5	6	6	5
Black	2	4	8	4	6
Hawaiian/Pacific Island.	0	0	0	0	0
Hispanic	8	8	6	6	5
Non-Resident Alien	3	5	1	5	7
Two or more races	5	4	4	3	3
Unidentified	67	61	34	15	28
Total Part-time	<u>188</u>	<u>207</u>	<u>207</u>	<u>143</u>	<u>167</u>
<b>First-Professional Students</b>					
<b>Full-time</b>					
White	260	264	258	258	252
American Indian/Alaskan	0	0	0	0	0
Asian	7	8	9	9	7
Black	1	2	2	4	4
Hawaiian/Pacific Island.	0	0	0	0	0
Hispanic	1	3	3	4	6
Non-Resident Alien	1	1	1	1	1
Two or more races	2	5	10	8	8
Unidentified	4	2	5	4	6
285 Total Full-time	<u>276</u>	<u>285</u>	<u>288</u>	<u>288</u>	<u>284</u>
<b>Part-time</b>					
White	1	0	0	1	1
American Indian/Alaskan	0	0	0	0	0
Asian	0	0	0	0	0
Black	1	0	0	0	0
Hawaiian/Pacific Island.	0	0	0	0	0
Hispanic	0	0	0	0	0
Non-Resident Alien	1	0	0	0	0
Two or more races	0	0	0	0	0
Unidentified	0	0	0	0	0
Total Part-time	<u>3</u>	<u>0</u>	<u>0</u>	<u>1</u>	<u>1</u>

(Continued on following page)

**Fall Enrollment by Ethnicity (continued)**

	<u>2011</u>	<u>2012</u>	<u>2013</u>	<u>2014</u>	<u>2015</u>
<b>Graduate Students</b>					
<b>Full-time</b>					
White	151	127	128	138	129
American Indian/Alaskan	0	0	0	0	0
Asian	7	3	5	5	5
Black	13	8	9	8	5
Hawaiian/Pacific Island.	1	0	0	1	0
Hispanic	3	1	8	4	9
Non-Resident Alien	31	32	31	30	36
Two or more races	2	1	10	4	7
Unidentified	40	11	10	7	7
Total Full-time	<u>248</u>	<u>183</u>	<u>201</u>	<u>197</u>	<u>198</u>
<b>Part-time</b>					
White	2,113	2,006	1,598	1,512	1,775
American Indian/Alaskan	1	3	3	2	3
Asian	19	21	15	17	23
Black	32	40	34	31	99
Hawaiian/Pacific Island.	0	0	2	2	6
Hispanic	36	35	41	36	52
Non-Resident Alien	3	1	4	4	2
Two or more races	23	22	16	29	32
Unidentified	198	132	75	83	157
Total Part-time	<u>2,425</u>	<u>2,260</u>	<u>1,788</u>	<u>1,716</u>	<u>2,149</u>
<b>Total University</b>					
<b>Full-time</b>					
White	1,966	2,070	2,065	2,023	2,017
American Indian/Alaskan	3	2	4	3	9
Asian	64	64	73	62	78
Black	85	87	84	80	93
Hawaiian/Pacific Island.	1	1	3	4	3
Hispanic	67	79	110	140	157
Non-Resident Alien	88	134	195	227	232
Two or more races	48	64	76	106	99
Unidentified	225	62	60	57	48
Total Full-time	<u>2,547</u>	<u>2,563</u>	<u>2,670</u>	<u>2,702</u>	<u>2,736</u>
<b>Part-time</b>					
White	2,216	2,126	1,746	1,617	1,889
American Indian/Alaskan	1	3	3	2	3
Asian	20	26	21	23	28
Black	35	44	42	35	105
Hawaiian/Pacific Island.	0	0	2	2	6
Hispanic	44	43	47	42	57
Non-Resident Alien	7	6	5	9	9
Two or more races	28	26	20	32	35
Unidentified	265	193	109	98	185
Total Part-time	<u>2,616</u>	<u>2,467</u>	<u>1,995</u>	<u>1,860</u>	<u>2,317</u>

## Fall Enrollment Percentages

### Status

	Undergraduate	First Professional	Graduate	Total
Full-time	93.1%	99.6%	8.4%	54.1%
Part-time	6.9%	0.4%	91.6%	45.9%
<b>Full-time</b>				
White	72.6%	88.7%	65.2%	73.7%
American Indian/Alaskan	0.4%	0.0%	0.0%	0.3%
Asian	2.9%	2.5%	2.5%	2.9%
Black	3.7%	1.4%	2.5%	3.4%
Hawaiian/Pacific Islander	0.1%	0.0%	0.0%	0.1%
Hispanic	6.3%	2.1%	4.5%	5.7%
Non-Resident Alien	8.7%	0.4%	18.2%	8.5%
Two or more races	3.7%	2.8%	3.5%	3.6%
Unidentified	1.6%	2.1%	3.5%	1.8%
<b>Part-time</b>				
White	67.7%	100.0%	82.6%	81.5%
American Indian/Alaskan	0.0%	0.0%	0.1%	0.1%
Asian	3.0%	0.0%	1.1%	1.2%
Black	3.6%	0.0%	4.6%	4.5%
Hawaiian/Pacific Islander	0.0%	0.0%	0.3%	0.3%
Hispanic	3.0%	0.0%	2.4%	2.5%
Non-Resident Alien	4.2%	0.0%	0.1%	0.4%
Two or more races	1.8%	0.0%	1.5%	1.5%
Unidentified	16.8%	0.0%	7.3%	8.0%
<b>Total</b>				
White	72.2%	88.8%	81.1%	77.3%
American Indian/Alaskan	0.4%	0.0%	0.1%	0.2%
Asian	2.9%	2.5%	1.2%	2.1%
Black	3.7%	1.4%	4.4%	3.9%
Hawaiian/Pacific Islander	0.1%	0.0%	0.3%	0.2%
Hispanic	6.1%	2.1%	2.6%	4.2%
Non-Resident Alien	8.3%	0.4%	1.6%	4.8%
Two or more races	3.6%	2.8%	1.7%	2.7%
Unidentified	2.6%	2.1%	7.0%	4.6%

### Gender

<b>Full-time</b>				
Male	52.5%	37.0%	50.0%	50.7%
Female	47.5%	63.0%	50.0%	49.3%
<b>Part-time</b>				
Male	46.1%	100.0%	23.2%	24.9%
Female	53.9%	0.0%	76.8%	75.1%
<b>Total</b>				
Male	52.1%	37.2%	25.4%	38.9%
Female	47.9%	62.8%	74.6%	61.1%



## Fall Enrollment by Primary Major

As of official census date

### Full-time Undergraduate

	Fall 2011	Fall 2012	Fall 2013	Fall 2014	Fall 2015
<b>Division of Biology &amp; Health Sciences</b>	<b>149</b>	<b>139</b>	<b>165</b>	<b>166</b>	<b>149</b>
Biology	141	123	151	155	142
Medical Laboratory Sciences	8	16	14	11	7
<b>Department of Chemistry</b>	<b>41</b>	<b>37</b>	<b>36</b>	<b>31</b>	<b>33</b>
Biochemistry	15	14	12	11	17
Chemistry	26	23	24	20	16
<b>Department of Finance, Accounting &amp; Management</b>	<b>217</b>	<b>209</b>	<b>233</b>	<b>256</b>	<b>284</b>
Accounting	72	78	89	86	85
Business Administration	145	98	49	33	23
Finance	-	7	19	41	57
Management	-	26	76	81	84
Sports Management	-	-	-	15	35
<b>Dept. of Entrepreneurship, Leadership &amp; Marketing</b>	<b>22</b>	<b>48</b>	<b>65</b>	<b>76</b>	<b>94</b>
Entrepreneurship	22	33	29	29	31
Marketing	-	15	36	47	63
<b>Department of Communication Studies</b>	<b>77</b>	<b>73</b>	<b>67</b>	<b>63</b>	<b>49</b>
Communication Studies	77	73	67	63	49
<b>Department of Education</b>	<b>121</b>	<b>90</b>	<b>81</b>	<b>75</b>	<b>74</b>
Elementary & Early Childhood Education	3	14	19	20	30
Elementary Education	41	20	-	-	-
Middle School Education	6	11	10	8	7
Pre-Elementary Education	46	29	40	40	34
Pre-Middle School Education	25	16	12	7	3
<b>Electrical Engineering, Bioengineering &amp; Physics Dept.</b>	<b>47</b>	<b>59</b>	<b>86</b>	<b>88</b>	<b>102</b>
Electrical Engineering	47	59	83	85	96
Physics	-	-	3	3	6
<b>Mechanical Engineering &amp; Engineering Mgt. Dept.</b>	<b>146</b>	<b>196</b>	<b>215</b>	<b>227</b>	<b>260</b>
Applied & Engineering Sciences	-	-	1	1	4
Engineering	21	52	44	34	38
Engineering Management	10	10	11	13	17
Mechanical Engineering	115	134	159	179	201
<b>Dept. of Environmental Engr. &amp; Earth Sciences</b>	<b>68</b>	<b>83</b>	<b>89</b>	<b>110</b>	<b>91</b>
Earth & Environmental Sciences	17	24	30	30	15
Environmental Engineering	51	59	59	80	76
<b>Department of English</b>	<b>50</b>	<b>44</b>	<b>29</b>	<b>33</b>	<b>31</b>
English	50	44	29	33	31
<b>Division of Global History, Languages &amp; Philosophy</b>	<b>58</b>	<b>50</b>	<b>27</b>	<b>30</b>	<b>33</b>
History	48	44	20	21	22
Spanish	8	4	6	7	9
Philosophy	2	2	1	2	2
<b>Integrative Media and Art Department</b>	<b>44</b>	<b>45</b>	<b>52</b>	<b>46</b>	<b>44</b>
Integrative Media	44	45	52	46	44

(Continued on following page)

## Fall Enrollment by Primary Major (continued)

### Full-time Undergraduate

	Fall 2011	Fall 2012	Fall 2013	Fall 2014	Fall 2015
<b>Department of Math &amp; Computer Science</b>	<b>64</b>	<b>71</b>	<b>74</b>	<b>74</b>	<b>60</b>
Computer Info Systems	7	7	6	11	7
Computer Science	33	36	42	40	34
Mathematics	24	28	26	23	19
<b>Passan School of Nursing</b>	<b>257</b>	<b>294</b>	<b>275</b>	<b>269</b>	<b>302</b>
Nursing	257	294	275	269	302
<b>Nesbitt School of Pharmacy</b>	<b>132</b>	<b>134</b>	<b>141</b>	<b>145</b>	<b>148</b>
Pre-Pharmacy	130	131	141	145	148
Pharmaceutical Sciences	2	3	-	-	-
<b>Division of Behavioral and Social Sciences</b>	<b>273</b>	<b>280</b>	<b>289</b>	<b>290</b>	<b>288</b>
Criminology	104	106	107	90	91
International Studies	11	12	8	9	13
Neuroscience	-	-	-	-	12
Political Science	34	27	29	27	27
Psychology	110	125	136	155	134
Sociology	14	10	9	9	11
<b>Division of Performing Arts</b>	<b>13</b>	<b>18</b>	<b>17</b>	<b>20</b>	<b>14</b>
Musical Theatre	5	9	7	9	8
Theatre Arts	8	9	10	11	6
<b>Individualized Studies</b>	<b>-</b>	<b>-</b>	<b>-</b>	<b>1</b>	<b>-</b>
<b>Undeclared</b>	<b>244</b>	<b>225</b>	<b>240</b>	<b>217</b>	<b>198</b>
<b>Total</b>	<b>2,023</b>	<b>2,095</b>	<b>2,181</b>	<b>2,217</b>	<b>2,254</b>

### Full-time Graduate

	Fall 2011	Fall 2012	Fall 2013	Fall 2014	Fall 2015
<b>Dept. of Finance, Accounting &amp; Management</b>	<b>48</b>	<b>29</b>	<b>41</b>	<b>46</b>	<b>46</b>
Business Administration	48	29	41	46	46
<b>Graduate Education</b>	<b>92</b>	<b>51</b>	<b>46</b>	<b>47</b>	<b>49</b>
<b>Electrical Engr., Bioengineering &amp; Physics Dept.</b>	<b>5</b>	<b>2</b>	<b>12</b>	<b>18</b>	<b>21</b>
Bioengineering	-	-	9	10	15
Electrical Engineering	5	2	3	8	6
<b>Mechanical Engineering &amp; Engineering Mgt. Dept.</b>	<b>22</b>	<b>28</b>	<b>19</b>	<b>14</b>	<b>19</b>
Engineering Management	18	20	10	6	10
Mechanical Engineering	4	8	9	8	9
<b>Creative Writing</b>	<b>72</b>	<b>66</b>	<b>71</b>	<b>58</b>	<b>48</b>
<b>Department of Math &amp; Computer Science</b>	<b>-</b>	<b>1</b>	<b>2</b>	<b>1</b>	<b>1</b>
Mathematics	-	-	2	1	1
<b>Passan School of Nursing</b>	<b>5</b>	<b>-</b>	<b>7</b>	<b>11</b>	<b>11</b>
Nursing	5	-	7	11	11
<b>Undeclared</b>	<b>4</b>	<b>6</b>	<b>3</b>	<b>2</b>	<b>3</b>
<b>Total</b>	<b>248</b>	<b>183</b>	<b>201</b>	<b>197</b>	<b>198</b>

### Full-time First-Professional

	Fall 2011	Fall 2012	Fall 2013	Fall 2014	Fall 2015
<b>Nesbitt School of Pharmacy</b>	<b>276</b>	<b>285</b>	<b>288</b>	<b>288</b>	<b>284</b>
Pharmacy	276	285	288	288	284

(Continued on following page)

## Fall Enrollment by Primary Major (continued)

### Part-time Undergraduate

	Fall 2011	Fall 2012	Fall 2013	Fall 2014	Fall 2015
<b>Division of Biology &amp; Health Sciences</b>	<b>5</b>	<b>5</b>	<b>5</b>	<b>6</b>	<b>4</b>
Biology	4	4	5	6	3
Medical Laboratory Sciences	1	1	-	-	1
<b>Department of Chemistry</b>	<b>4</b>	<b>1</b>	<b>2</b>	<b>2</b>	<b>1</b>
Biochemistry	1	-	-	-	-
Chemistry	3	1	2	2	1
<b>Dept. of Finance, Accounting and Management</b>	<b>32</b>	<b>33</b>	<b>28</b>	<b>28</b>	<b>16</b>
Accounting	3	3	2	3	2
Business Administration	29	28	21	20	12
Finance	-	1	1	-	1
Management	-	1	4	4	1
Sports Management	-	-	-	1	-
<b>Dept. of Entrepreneurship, Leadership &amp; Marketing</b>	<b>-</b>	<b>-</b>	<b>2</b>	<b>3</b>	<b>7</b>
Entrepreneurship	-	-	2	2	5
Marketing	-	-	-	1	2
<b>Department of Communication Studies</b>	<b>2</b>	<b>2</b>	<b>3</b>	<b>-</b>	<b>3</b>
Communication Studies	2	2	3	-	3
<b>Department of Education</b>	<b>4</b>	<b>5</b>	<b>5</b>	<b>-</b>	<b>2</b>
Elementary and Early Childhood Education	-	-	1	-	1
Education	1	-	-	-	-
Elementary Education	3	1	1	-	-
Pre-Elementary Education	-	3	2	-	-
Pre-Middle School Education	-	1	1	-	1
<b>Electrical Engineering, Bioengineering &amp; Physics Dept.</b>	<b>5</b>	<b>5</b>	<b>1</b>	<b>1</b>	<b>1</b>
Electrical Engineering	5	5	1	1	1
<b>Mechanical Engineering &amp; Engineering Mgt. Dept.</b>	<b>3</b>	<b>6</b>	<b>5</b>	<b>7</b>	<b>8</b>
Applied & Engineering Sciences	-	-	-	-	-
Engineering	1	1	2	1	2
Engineering Management	-	-	1	-	-
Mechanical Engineering	2	5	2	6	6
<b>Dept. of Environmental Engr. &amp; Earth Sciences</b>	<b>3</b>	<b>3</b>	<b>2</b>	<b>3</b>	<b>6</b>
Earth & Environmental Sciences	1	2	1	-	3
Environmental Engineering	2	1	1	3	3
<b>Department of English</b>	<b>4</b>	<b>3</b>	<b>5</b>	<b>1</b>	<b>1</b>
English	4	3	5	1	1
<b>Division of Global History, Languages &amp; Philosophy</b>	<b>4</b>	<b>5</b>	<b>4</b>	<b>2</b>	<b>2</b>
History	4	5	2	2	-
Philosophy	-	-	-	-	-
Spanish	-	-	2	-	2
<b>Integrative Media Department</b>	<b>3</b>	<b>4</b>	<b>4</b>	<b>1</b>	<b>4</b>
Integrative Media	3	4	4	1	4
<b>Department of Math &amp; Computer Science</b>	<b>7</b>	<b>5</b>	<b>6</b>	<b>9</b>	<b>7</b>
Computer Info Systems	2	-	-	1	3
Computer Science	2	2	3	5	1
Mathematics	3	3	3	3	3
<b>Passan School of Nursing</b>	<b>15</b>	<b>9</b>	<b>13</b>	<b>20</b>	<b>26</b>
Nursing	15	9	13	20	26
<b>Nesbitt School of Pharmacy</b>	<b>-</b>	<b>1</b>	<b>-</b>	<b>-</b>	<b>-</b>
Pre-Pharmacy	-	1	-	-	-
Pharmaceutical Science	-	-	-	-	-

(Continued on following page)

## Fall Enrollment by Primary Major (continued)

### Part-time Undergraduate

	Fall 2011	Fall 2012	Fall 2013	Fall 2014	Fall 2015
<b>Division of Behavioral and Social Sciences</b>	<b>9</b>	<b>3</b>	<b>9</b>	<b>12</b>	<b>12</b>
Criminology	2	1	3	3	3
International Studies	2	1	-	-	1
Political Science	-	-	-	1	1
Psychology	4	1	4	7	6
Sociology	1	-	2	1	1
<b>Division of Performing Arts</b>	<b>-</b>	<b>2</b>	<b>1</b>	<b>-</b>	<b>-</b>
Musical Theatre	-	1	-	-	-
Theatre Arts	-	1	1	-	-
<b>Individualized Studies</b>	<b>-</b>	<b>-</b>	<b>-</b>	<b>-</b>	<b>-</b>
<b>Undeclared</b>	<b>88</b>	<b>115</b>	<b>112</b>	<b>48</b>	<b>67</b>
<b>Total</b>	<b>188</b>	<b>207</b>	<b>207</b>	<b>143</b>	<b>167</b>

### Part-time Graduate

	Fall 2011	Fall 2012	Fall 2013	Fall 2014	Fall 2015
<b>Dept. of Finance, Accounting &amp; Management</b>	<b>134</b>	<b>115</b>	<b>119</b>	<b>135</b>	<b>122</b>
Business Administration	134	115	119	135	122
<b>Graduate Teacher Education</b>	<b>2,005</b>	<b>1,824</b>	<b>1,410</b>	<b>1,330</b>	<b>1,370</b>
<b>Electrical Engineering, Bioengineering &amp; Physics Dept.</b>	<b>6</b>	<b>5</b>	<b>5</b>	<b>10</b>	<b>9</b>
Bioengineering	-	-	3	7	4
Electrical Engineering	6	5	2	3	5
<b>Mechanical Engineering &amp; Engineering Mgt Dept.</b>	<b>20</b>	<b>23</b>	<b>23</b>	<b>14</b>	<b>6</b>
Engineering Management	-	11	12	10	6
Engineering Operations & Strategy	9	-	-	-	-
Mechanical Engineering	11	12	11	4	-
<b>Creative Writing</b>	<b>17</b>	<b>28</b>	<b>14</b>	<b>25</b>	<b>16</b>
<b>Department of Environmental Engr. &amp; Earth Sciences</b>	<b>3</b>	<b>5</b>	<b>2</b>	<b>2</b>	<b>2</b>
Sustainability Management	3	5	2	2	2
<b>Department of Math &amp; Computer Science</b>	<b>4</b>	<b>-</b>	<b>-</b>	<b>-</b>	<b>3</b>
Mathematics	4	-	-	-	3
<b>Passan School of Nursing</b>	<b>87</b>	<b>135</b>	<b>132</b>	<b>136</b>	<b>545</b>
Nursing	87	135	132	136	545
<b>Undeclared</b>	<b>149</b>	<b>125</b>	<b>83</b>	<b>64</b>	<b>76</b>
<b>Total</b>	<b>2,425</b>	<b>2,260</b>	<b>1,788</b>	<b>1,716</b>	<b>2,149</b>

### Part-time First-Professional

	Fall 2011	Fall 2012	Fall 2013	Fall 2014	Fall 2015
<b>Nesbitt School of Pharmacy</b>	<b>3</b>	<b>-</b>	<b>-</b>	<b>1</b>	<b>1</b>
Pharmacy	3	-	-	1	1

## ***Fall Enrollment by Residence***

### **Full-time Students**

	<u>Fall 2014</u>		<u>Fall 2015</u>	
<b>Residence Halls</b>				
First-time Freshmen	382	69%	447	77%
Undergraduate Students (including First-time Freshmen)	943	43%	974	43%
First-Professional Students	<u>48</u>	17%	<u>51</u>	18%
<b>Total</b>	<b>991</b>	<b>40%</b>	<b>1,025</b>	<b>40%</b>

### **Off-Campus**

First-time Freshmen	175	31%	134	23%
Undergraduate Students (including First-time Freshmen)	1,274	57%	1,280	57%
First-Professional Students	<u>240</u>	83%	<u>233</u>	82%
<b>Total</b>	<b>1,514</b>	<b>60%</b>	<b>1,513</b>	<b>60%</b>

### **Total Full-time**

First-time Freshmen	557	581
Undergraduate Students (including First-time Freshmen)	2,217	2,254
First-Professional Students	<u>288</u>	<u>284</u>
<b>Total</b>	<b>2,505</b>	<b>2,538</b>

## ***Fall Enrollment by Age Category***

### **Fall 2015 Enrollment**

	Full-time			Part-time			Total
	Undergraduate	First-Professional	Graduate	Undergraduate	First-Professional	Graduate	
<b>Under 18</b>	5	-	-	30	-	-	<b>35</b>
<b>18 - 19</b>	864	1	-	18	-	-	<b>883</b>
<b>20 - 21</b>	837	98	2	11	-	-	<b>948</b>
<b>22 - 24</b>	370	163	62	36	1	124	<b>756</b>
<b>25 - 29</b>	109	17	49	26	-	646	<b>847</b>
<b>30 - 34</b>	39	2	28	17	-	401	<b>487</b>
<b>35 - 39</b>	16	1	19	5	-	290	<b>331</b>
<b>40 - 49</b>	12	2	20	12	-	415	<b>461</b>
<b>50 - 64</b>	2	-	16	9	-	264	<b>291</b>
<b>65 &amp; Over</b>	-	-	-	-	-	5	<b>5</b>
<b>Age unknown</b>	-	-	2	3	-	4	<b>9</b>
<b>Total</b>	<b>2,254</b>	<b>284</b>	<b>198</b>	<b>167</b>	<b>1</b>	<b>2,149</b>	<b>5,053</b>

## Fall Enrollment by State of Origin

### Fall 2015 Enrollment

	Full-time			Part-time			Total
	Undergraduate	First- Professional	Graduate	Undergraduate	First- Professional	Graduate	
Alaska	1	-	-	-	-	-	1
Arizona	20	-	9	-	-	32	61
Arkansas	-	-	-	-	-	1	1
California	4	-	1	-	-	39	44
Colorado	-	-	-	-	-	1	1
Connecticut	7	3	1	-	-	17	28
Delaware	2	-	-	-	-	2	4
Florida	1	-	4	-	-	36	41
Georgia	-	-	1	-	-	14	15
Hawaii	1	-	-	-	-	1	2
Illinois	1	-	2	-	-	13	16
Indiana	-	1	-	-	-	11	12
Iowa	-	-	-	-	-	4	4
Louisiana	-	-	1	-	-	-	1
Maine	1	-	-	-	-	4	5
Maryland	16	2	1	-	-	9	28
Massachusetts	2	-	-	-	-	1	3
Michigan	-	-	1	-	-	10	11
Mississippi	-	-	-	-	-	8	8
Missouri	-	-	-	-	-	4	4
Montana	1	-	-	-	-	-	1
Nebraska	-	-	-	-	-	2	2
Nevada	-	-	-	-	-	1	1
New Hampshire	2	-	-	-	-	-	2
New Jersey	191	12	10	3	-	53	269
New York	109	29	4	5	-	61	208
North Carolina	-	-	1	-	-	5	6
Ohio	1	-	1	1	-	25	28
Oklahoma	-	-	-	-	-	4	4
Oregon	-	-	-	-	-	1	1
Pennsylvania	1,688	235	118	150	1	1,643	3,835
Rhode Island	1	-	-	-	-	1	2
South Carolina	1	-	2	-	-	8	11
Tennessee	1	-	-	-	-	2	3
Texas	-	-	2	-	-	57	59
Utah	-	-	1	-	-	3	4
Vermont	1	-	-	-	-	4	5
Virginia	5	1	2	1	-	33	42
Washington	-	-	-	-	-	6	6
West Virginia	-	-	-	-	-	2	2
Wisconsin	1	-	-	-	-	-	1
Canada	-	-	-	-	-	21	21
Foreign Country	196	1	36	7	-	10	250
<b>Total</b>	<b>2,254</b>	<b>284</b>	<b>198</b>	<b>167</b>	<b>1</b>	<b>2,149</b>	<b>5,053</b>
<b>In State</b>	<b>74.9%</b>	<b>82.7%</b>	<b>59.6%</b>	<b>89.8%</b>	<b>100.0%</b>	<b>76.5%</b>	<b>75.9%</b>
<b>Out of State</b>	<b>16.4%</b>	<b>16.9%</b>	<b>22.2%</b>	<b>6.0%</b>	<b>0.0%</b>	<b>22.1%</b>	<b>18.7%</b>
<b>Foreign</b>	<b>8.7%</b>	<b>0.4%</b>	<b>18.2%</b>	<b>4.2%</b>	<b>0.0%</b>	<b>1.4%</b>	<b>5.4%</b>

## ***International Students***

### **Fall 2015 Enrollment By Country of Origin**

	Undergraduate		First- Professional	Graduate		Total		Total
	International (NRA)	International (Other)	International (NRA)	International (NRA)	International (Other)	International (NRA)	International (Other)	
Afghanistan	1	-	-	-	-	1	-	1
Bahamas	-	-	-	1	-	1	-	1
Canada	-	-	-	-	21	-	21	21
China	17	-	-	3	-	20	-	20
India	1	-	-	13	-	14	-	14
Iran	-	-	-	2	-	2	-	2
Jamaica	-	-	1	-	-	1	-	1
Japan	-	-	-	-	1	-	1	1
Kuwait	28	-	-	-	-	28	-	28
Nigeria	-	-	-	1	-	1	-	1
Saudi Arabia	148	-	-	18	-	166	-	166
Spain	1	-	-	-	-	1	-	1
Thailand	1	-	-	-	-	1	-	1
Turkey	-	-	-	-	7	-	7	7
UAE	5	1	-	-	-	5	1	6
<b>Total</b>	<b>202</b>	<b>1</b>	<b>1</b>	<b>38</b>	<b>29</b>	<b>241</b>	<b>30</b>	<b>271</b>

### ***First Generation College Students from Entering Freshman Class\****

<u>2011</u>	<u>2012</u>	<u>2013</u>	<u>2014</u>	<u>2015</u>
51.8%	48.8%	54.3%	52.8%	51.2%

*\*A first generation student is defined as a student for whom neither parent graduated from a 4-year institution. The data is from a survey administered to incoming freshmen by University College.*

## ***Programs Offered***

### **Undergraduate**

BA	Biology	BBA	Business Administration
BA	Chemistry	BBA	Entrepreneurship
BA	Communication Studies	BBA	Finance
BA	Computer Science	BBA	Marketing
BA	Criminology	BBA	Management
BA	Earth & Environmental Sciences	BBA	Sports Management
BA	Elem. & Early Childhood Education	BFA	Musical Theatre
BA	English	BS	Applied & Engineering Sciences
BA	History	BS	Accounting
BA	Individualized Studies	BS	Biochemistry
BA	Integrative Media	BS	Biology
BA	International Studies	BS	Chemistry
BA	Mathematics	BS	Computer Information Systems
BA	Middle Level Education	BS	Computer Science
BA	Philosophy	BS	Earth & Environmental Sciences
BA	Physics	BS	Electrical Engineering
BA	Political Science	BS	Engineering Management
BA	Public Administration	BS	Environmental Engineering
BA	Psychology	BS	Individualized Studies
BA	Secondary Education	BS	Mathematics
BA	Sociology	BS	Mechanical Engineering
BA	Spanish	BS	Medical Laboratory Sciences
BA	Theatre Arts	BS	Neuroscience
		BS	Nursing

### **Graduate**

MA	Creative Writing
MBA	Business Administration
MFA	Creative Writing
MS	Education
MS	Bioengineering
MS	Electrical Engineering
MS	Engineering Management
MS	Mathematics
MS	Mechanical Engineering
MS	Nursing

### **Doctoral**

EDD	Educational Leadership
<b>Doctoral</b>	<b>Professional Practice</b>
DPH	Pharmacy
DNP	Nursing Practice

Source: Registrar



## Degrees Granted by Department and Major Bachelor's Degrees

Department	2010-11	2011-12	2012-13	2013-14	2014-15
<b>Division of Biology &amp; Health Sciences</b>	<b>21</b>	<b>21</b>	<b>19</b>	<b>27</b>	<b>29</b>
Biology	21	21	18	27	29
Medical Laboratory Sciences	-	-	1	-	-
<b>Department of Chemistry</b>	<b>2</b>	<b>6</b>	<b>6</b>	<b>4</b>	<b>3</b>
Biochemistry	-	2	2	1	-
Chemistry	2	4	4	3	3
<b>Department of Finance, Accounting &amp; Management</b>	<b>77</b>	<b>78</b>	<b>63</b>	<b>59</b>	<b>64</b>
Accounting	18	20	18	21	19
Business Administration	59	58	32	18	11
Finance	-	-	3	3	12
Management	-	-	10	17	22
<b>Dept. of Entrepreneurship, Leadership &amp; Marketing</b>	<b>9</b>	<b>9</b>	<b>8</b>	<b>18</b>	<b>11</b>
Entrepreneurship	9	9	6	10	1
Marketing	-	-	2	8	10
<b>Department of Communication Studies</b>	<b>32</b>	<b>18</b>	<b>24</b>	<b>20</b>	<b>17</b>
<b>Integrative Media and Art Department</b>	<b>6</b>	<b>10</b>	<b>7</b>	<b>13</b>	<b>14</b>
Integrative Media	6	10	7	13	14
<b>Department of Education</b>	<b>30</b>	<b>24</b>	<b>27</b>	<b>17</b>	<b>15</b>
Elementary Education	28	23	21	2	2
Early Childhood Education	1	-	-	9	9
Middle Level Education	1	1	6	6	4
<b>Electrical Engineering, Bioengineering &amp; Physics Dept.</b>	<b>17</b>	<b>7</b>	<b>11</b>	<b>11</b>	<b>11</b>
Electrical Engineering	17	7	11	11	10
Physics	-	-	-	-	1
<b>Mechanical Engineering &amp; Engineering Management Dept.</b>	<b>19</b>	<b>22</b>	<b>27</b>	<b>28</b>	<b>40</b>
Applied & Engineering Sciences	-	-	2	-	-
Engineering Management	1	2	1	3	2
Mechanical Engineering	18	20	24	25	38
<b>Department of Environmental Engineering &amp; Earth Sciences</b>	<b>24</b>	<b>13</b>	<b>18</b>	<b>12</b>	<b>24</b>
Earth & Environmental Sciences	9	6	5	6	8
Environmental Engineering	15	7	13	6	16
<b>Department of English</b>	<b>10</b>	<b>15</b>	<b>15</b>	<b>14</b>	<b>10</b>
English	10	15	15	14	10
<b>Division of Global History, Languages &amp; Philosophy</b>	<b>26</b>	<b>23</b>	<b>21</b>	<b>12</b>	<b>11</b>
History	20	14	18	8	7
Philosophy	1	1	-	1	-
Spanish	5	8	3	3	4
<b>Department of Math &amp; Computer Science</b>	<b>9</b>	<b>17</b>	<b>16</b>	<b>12</b>	<b>18</b>
Computer Information Systems	2	4	3	-	2
Computer Science	1	5	6	6	10
Mathematics	6	8	7	6	6
<b>Nesbitt School of Pharmacy</b>	<b>3</b>	<b>-</b>	<b>3</b>	<b>-</b>	<b>-</b>
Pharmaceutical Sciences	3	-	3	-	-
<b>Passan School of Nursing</b>	<b>49</b>	<b>37</b>	<b>65</b>	<b>68</b>	<b>66</b>
Nursing	49	37	65	68	66

(Continued on following page)

## Degrees Granted by Department and Major (continued)

### Bachelor's Degrees

Department	2010-11	2011-12	2012-13	2013-14	2014-15
<b>Division of Behavioral and Social Sciences</b>	<b>58</b>	<b>73</b>	<b>67</b>	<b>72</b>	<b>66</b>
Criminology	11	16	24	27	19
International Studies	-	3	3	1	-
Political Science	8	11	6	6	7
Psychology	32	34	29	34	36
Sociology	7	9	5	4	4
<b>Division of Performing Arts</b>	<b>6</b>	<b>4</b>	<b>3</b>	<b>7</b>	<b>4</b>
Music Education	-	-	-	1	-
Musical Theatre	1	1	1	1	1
Theatre Arts	5	3	2	5	3
<b>Generic Bachelor of Science</b>	<b>64</b>	<b>69</b>	<b>62</b>	<b>69</b>	<b>71</b>
<b>Individualized Studies</b>	<b>-</b>	<b>-</b>	<b>-</b>	<b>-</b>	<b>-</b>
<b>Total</b>	<b>462</b>	<b>446</b>	<b>462</b>	<b>463</b>	<b>474</b>

### Master's Degrees

Department	2010-11	2011-12	2012-13	2013-14	2014-15
<b>Department of Finance, Accounting &amp; Management</b>	<b>69</b>	<b>50</b>	<b>55</b>	<b>62</b>	<b>59</b>
Business Administration	69	50	55	62	59
<b>Creative Writing</b>	<b>50</b>	<b>62</b>	<b>63</b>	<b>43</b>	<b>50</b>
<b>Graduate Education</b>	<b>1,150</b>	<b>1,145</b>	<b>852</b>	<b>750</b>	<b>652</b>
<b>Electrical Engineering, Bioengineering &amp; Physics Dept.</b>	<b>3</b>	<b>5</b>	<b>6</b>	<b>2</b>	<b>11</b>
Bioengineering	-	-	-	-	5
Electrical Engineering	5	5	6	2	6
<b>Mechanical Engineering &amp; Engineering Management Dept.</b>	<b>8</b>	<b>5</b>	<b>17</b>	<b>21</b>	<b>13</b>
Engineering Management	6	5	13	10	9
Engineering Operations & Strategy	2	-	-	-	-
Mechanical Engineering	-	-	4	11	4
<b>Department of Math &amp; Computer Science</b>	<b>1</b>	<b>1</b>	<b>1</b>	<b>1</b>	<b>1</b>
Mathematics	1	1	1	1	1
<b>Passan School of Nursing</b>	<b>19</b>	<b>30</b>	<b>3</b>	<b>16</b>	<b>16</b>
Nursing	19	30	3	16	16
<b>Total</b>	<b>1,300</b>	<b>1,298</b>	<b>997</b>	<b>895</b>	<b>802</b>

### Doctoral Professional Practice

Department	2010-11	2011-12	2012-13	2013-14	2014-15
<b>Nesbitt School of Pharmacy</b>	<b>70</b>	<b>66</b>	<b>69</b>	<b>72</b>	<b>71</b>
<b>Passan School of Nursing</b>	<b>-</b>	<b>-</b>	<b>14</b>	<b>31</b>	<b>21</b>
<b>Total</b>	<b>70</b>	<b>66</b>	<b>83</b>	<b>103</b>	<b>92</b>

### Doctoral Degrees

Department	2010-11	2011-12	2012-13	2013-14	2014-15
<b>Department of Education</b>	<b>3</b>	<b>7</b>	<b>10</b>	<b>18</b>	<b>11</b>

## Admissions

	<u>Fall 2011</u>	<u>Fall 2012</u>	<u>Fall 2013</u>	<u>Fall 2014</u>	<u>Fall 2015</u>
<b>Applied</b>	<b>3,275</b>	<b>3,440</b>	<b>3,656</b>	<b>3,198</b>	<b>3,685</b>
Freshman	2,811	2,998	3,120	2,812	3,164
Transfer	464	442	536	386	521
<b>Offered Admission</b>	<b>2,449</b>	<b>2,607</b>	<b>2,835</b>	<b>2,532</b>	<b>2,955</b>
Freshman	2,146	2,278	2,500	2,211	2,586
Transfer	303	329	335	321	369
<b>Offer Rate</b>	<b>74.8%</b>	<b>75.8%</b>	<b>77.5%</b>	<b>79.2%</b>	<b>80.2%</b>
Freshman	76.3%	76.0%	80.1%	78.6%	81.7%
Transfer	65.3%	74.4%	62.5%	83.2%	70.8%
<b>Enrolled*</b>	<b>719</b>	<b>769</b>	<b>771</b>	<b>736</b>	<b>800</b>
Freshman	558	611	606	568	601
Transfer	161	158	165	168	199
<b>Yield Rate</b>	<b>29.4%</b>	<b>29.5%</b>	<b>27.2%</b>	<b>29.1%</b>	<b>27.1%</b>
Freshman	26.0%	26.8%	24.2%	25.7%	23.2%
Transfer	53.1%	48.0%	49.3%	52.3%	53.9%

\*As of the beginning of the Fall semester

## Average SAT Scores for First-time Full-time Freshmen

Wilkes Freshmen	<u>Fall 2011</u>	<u>Fall 2012</u>	<u>Fall 2013</u>	<u>Fall 2014</u>	<u>Fall 2015</u>
<b>Verbal</b>	515	517	509	512	514
<b>Math</b>	537	537	531	531	532
<b>Writing</b>	509	508	498	499	498
<b>Total Math &amp; Verbal</b>	1051	1054	1040	1043	1046
<b>National Average</b>					
<b>Verbal</b>	497	496	496	497	495
<b>Math</b>	514	514	514	513	511
<b>Writing</b>	489	488	488	487	484
<b>Total Math &amp; Verbal</b>	1011	1010	1010	1010	1006

## Undergraduate Retention of First-time Full-time Freshmen

Entering Fall Term*		1st Fall	Retention Rates						
			2nd Fall	3rd Fall	4th Fall	5th Fall	6th Fall	7th Fall	8th Fall
2004	N	551	443	390	371	70	9	4	3
	%		80.4%	70.8%	67.3%	12.7%	1.6%	0.7%	0.5%
2005	N	566	417	366	348	62	2	1	0
	%		73.7%	64.7%	61.5%	11.0%	0.4%	0.2%	0.0%
2006	N	571	453	387	354	78	16	2	1
	%		79.3%	67.8%	62.0%	13.7%	2.8%	0.4%	0.2%
2007	N	620	483	408	381	76	12	6	1
	%		77.9%	65.8%	61.5%	12.3%	1.9%	1.0%	0.2%
2008	N	561	447	355	337	72	7	5	4
	%		79.7%	63.3%	60.1%	12.8%	1.2%	0.9%	0.7%
2009	N	527	417	359	337	70	13	5	
	%		79.1%	68.1%	63.9%	13.3%	2.5%	0.9%	
2010	N	499	408	339	326	75	10		
	%		81.8%	67.9%	65.3%	15.0%	2.0%		
2011	N	539	433	359	335	73			
	%		80.3%	66.6%	62.2%	13.5%			
2012	N	589	462	402	371				
	%		78.4%	68.3%	63.0%				
2013	N	584	459	394					
	%		78.6%	67.5%					
2014	N	557	431						
	%		77.4%						
2015	N	581							

\* As of official census date

Note: Includes retention of students who enter the School of Pharmacy.

## Graduation Rates for First-time Full-time Freshmen

Entering Fall Term*		Graduation Rates					
		1st Fall	within 4 yrs	within 5 yrs	within 6 yrs	within 7 yrs	within 8 yrs
2002	N	471	224	266	272	277	278
	%		47.6%	56.5%	57.7%	58.8%	59.0%
2003	N	509 **	254	310	320	324	326
	%		49.9%	60.9%	62.9%	63.7%	64.0%
2004	N	550 **	288	349	355	357	359
	%		52.4%	63.5%	64.5%	64.9%	65.3%
2005	N	562 **	270	323	325	325	325
	%		48.0%	57.5%	57.8%	57.8%	57.8%
2006	N	570 **	279	334	346	348	350
	%		48.9%	58.6%	60.7%	61.1%	61.4%
2007	N	620	291	348	359	363	364
	%		46.9%	56.1%	57.9%	58.5%	58.7%
2008	N	559 **	249	308	311	314	
	%		44.5%	55.1%	55.6%	56.2%	
2009	N	527	250	303	312		
	%		47.4%	57.5%	59.2%		
2010	N	499	240	296			
	%		48.1%	59.3%			
2011	N	539	253				
	%		46.9%				

\*As of official census date

\*\*Cohort adjusted in accordance with IPEDS regulations

## Student Credit Hours by Department and Subject

<b>Undergraduate</b>	<b>2010-11</b>	<b>2011-12</b>	<b>2012-13</b>	<b>2013-14</b>	<b>2014-15</b>
<b>Department of Aerospace Studies</b>	<b>231</b>	<b>184</b>	<b>174</b>	<b>171</b>	<b>118</b>
Aerospace Studies	231	184	174	171	118
<b>Division of Biology &amp; Health Sciences</b>	<b>3,899</b>	<b>4,040</b>	<b>3,997</b>	<b>4,323</b>	<b>4,227</b>
Biology	3,896	4,040	3,997	4,323	4,227
Marine Science	3	-	-	-	-
<b>Department of Chemistry</b>	<b>3,080</b>	<b>3,542</b>	<b>3,540</b>	<b>3,493</b>	<b>3,530</b>
Chemistry	3,080	3,542	3,540	3,493	3,530
<b>Department of Finance, Accounting &amp; Management</b>	<b>5,574</b>	<b>5,466</b>	<b>4,903</b>	<b>5,136</b>	<b>6,309</b>
Adult Business Administration	300	420	432	445	291
Accounting	1,215	1,284	1,263	1,314	1,443
Business Administration	4,059	3,762	1,456	1,471	1,800
Finance	-	-	438	582	762
Management	-	-	1,314	1,324	1,806
Sports Management	-	-	-	-	207
<b>Dept. of Entrepreneurship, Leadership &amp; Marketing</b>	<b>1,186</b>	<b>1,169</b>	<b>1,691</b>	<b>2,027</b>	<b>2,138</b>
Entrepreneurship	573	574	574	666	701
Leadership	-	-	189	249	318
Marketing	-	-	606	762	727
Personal & Professional Development	613	595	322	350	392
<b>Department of Communication Studies</b>	<b>2,747</b>	<b>2,470</b>	<b>2,487</b>	<b>2,419</b>	<b>2,143</b>
Communications	2,747	2,470	2,487	2,419	2,143
<b>Department of Education</b>	<b>3,294</b>	<b>3,025</b>	<b>2,303</b>	<b>1,900</b>	<b>1,619</b>
Education	2,661	2,452	1,850	1,465	1,235
Special Education	633	573	453	435	384
<b>Electrical Engineering, Bioengineering &amp; Physics Dept.</b>	<b>2,544</b>	<b>2,586</b>	<b>3,053</b>	<b>3,273</b>	<b>3,438</b>
Electrical Engineering	913	732	969	1,135	1,336
Physics	1,631	1,854	2,084	2,138	2,102
<b>Mechanical Engineering &amp; Engineering Mgt. Dept.</b>	<b>2,322</b>	<b>2,576</b>	<b>3,263</b>	<b>3,953</b>	<b>4,570</b>
Engineering	883	914	1,112	1,225	1,271
Engineering Management	146	184	216	392	453
Mechanical Engineering	1,293	1,478	1,935	2,336	2,846
<b>Dept. of Environmental Engr. &amp; Earth Sciences</b>	<b>2,129</b>	<b>1,992</b>	<b>2,159</b>	<b>2,497</b>	<b>2,499</b>
Earth & Environmental Sciences	1,420	1,467	1,604	1,873	1,634
Environmental Engineering	709	525	555	624	865
<b>Department of English</b>	<b>4,541</b>	<b>4,489</b>	<b>4,738</b>	<b>4,589</b>	<b>4,361</b>
English	4,541	4,489	4,738	4,589	4,361
<b>Division of Global History &amp; Languages &amp; Philosophy</b>	<b>4,643</b>	<b>3,999</b>	<b>4,297</b>	<b>4,290</b>	<b>4,572</b>
French	135	174	144	135	213
History	2,584	2,364	2,436	2,200	2,313
Philosophy	817	696	640	770	759
Spanish	1,107	765	1,077	1,185	1,287

(Continued on following page)

## Student Credit Hours by Department & Subject (continued)

<b>Undergraduate</b>	<b>2010-11</b>	<b>2011-12</b>	<b>2012-13</b>	<b>2013-14</b>	<b>2014-15</b>
<b>Integrative Media and Art Department</b>	<b>1,771</b>	<b>1,716</b>	<b>1,842</b>	<b>1,952</b>	<b>1,886</b>
Integrative Media	433	417	528	596	617
Art	1,338	1,299	1,314	1,356	1,269
<b>Interdisciplinary</b>	<b>2,070</b>	<b>2,132</b>	<b>2,395</b>	<b>2,299</b>	<b>2,242</b>
Cooperative Education	122	72	110	81	100
Career Planning	255	211	218	187	181
Freshman Foundations	1,635	1,776	1,953	1,911	1,803
Interdisciplinary Core Studies	3	-	-	-	-
Study Travel Experience	-	-	-	-	-
Women's Studies	55	73	114	120	158
<b>Department of Math &amp; Computer Science</b>	<b>6,320</b>	<b>6,559</b>	<b>6,951</b>	<b>7,707</b>	<b>6,968</b>
Computer Science	2,079	2,117	1,999	2,311	2,107
Mathematics	4,241	4,442	4,952	5,396	4,861
<b>Passan School of Nursing</b>	<b>3,506</b>	<b>4,317</b>	<b>5,251</b>	<b>5,357</b>	<b>5,411</b>
Nursing	3,506	4,317	5,251	5,357	5,411
<b>Nesbit School of Pharmacy</b>	<b>5,122</b>	<b>5,260</b>	<b>5,250</b>	<b>5,194</b>	<b>5,057</b>
Pharmacy	4,995	5,200	5,198	5,158	5,053
Pharmaceutical Sciences	127	60	52	36	4
<b>Division of Behavioral &amp; Social Sciences</b>	<b>9,261</b>	<b>9,243</b>	<b>9,110</b>	<b>9,721</b>	<b>9,408</b>
Anthropology	822	711	594	870	759
Economics	798	1,098	959	926	813
International Studies	3	9	12	3	3
Political Science	1,542	1,407	1,323	1,237	1,100
Psychology	3,828	3,783	3,682	3,969	4,028
Sociology	2,268	2,235	2,540	2,716	2,705
<b>Division of Performing Arts</b>	<b>2,079</b>	<b>2,240</b>	<b>2,274</b>	<b>2,206</b>	<b>2,205</b>
Dance	793	913.5	855	711	819
Music	731	793.5	778	880	848
Theatre Arts	555	533	641	615	538
<b>Total</b>	<b>66,319</b>	<b>67,005</b>	<b>69,678</b>	<b>72,507</b>	<b>72,701</b>

(Continued on following page)

## Student Credit Hours by Department & Subject (continued)

<b>Graduate</b>	<b>2010-11</b>	<b>2011-12</b>	<b>2012-13</b>	<b>2013-14</b>	<b>2014-15</b>
<b>Division of Biology &amp; Health Sciences</b>	<b>30</b>	<b>12</b>	<b>33</b>	<b>31</b>	<b>12</b>
Biology	30	12	33	31	12
<b>Department of Chemistry</b>	<b>15</b>	<b>-</b>	<b>-</b>	<b>36</b>	<b>9</b>
Chemistry	15	-	-	36	9
<b>Department of Finance, Accounting &amp; Management</b>	<b>3,272</b>	<b>2,815</b>	<b>2,362</b>	<b>2,558</b>	<b>2,835</b>
MBA	3,272	2,815	2,362	2,558	2,835
<b>Graduate Education</b>	<b>47,493</b>	<b>37,560</b>	<b>32,025</b>	<b>26,511</b>	<b>22,656</b>
Autism	150	60	129	207	150
Education	36,753	27,168	21,648	17,136	13,707
Special Education	468	450	396	246	210
Educational Advanced Methods	4,602	3,825	3,738	3,585	4,092
Education - International School Leadership	-	-	15	39	42
Education - Instructional Media	4,368	3,999	2,952	2,748	2,241
Education - Middle Level	-	531	1,368	636	303
English as a Second Language	357	849	1,074	1,110	1,029
School Business Leadership	795	678	705	804	882
<b>Electrical Engineering, Bioengineering &amp; Physics Dept.</b>	<b>168</b>	<b>165</b>	<b>165</b>	<b>306</b>	<b>411</b>
Bioengineering	-	-	99	192	219
Electrical Engineering	141	144	54	105	162
Physics	27	21	12	9	30
<b>Mechanical Engineering &amp; Engineering Management Dept</b>	<b>222</b>	<b>573</b>	<b>597</b>	<b>531</b>	<b>459</b>
Engineering Management	-	333	372	249	177
Engineering Operations & Strategy	162	33	-	-	-
Mechanical Engineering	60	207	225	282	282
<b>Creative Writing</b>	<b>1,827</b>	<b>1,639</b>	<b>1,443</b>	<b>1,441</b>	<b>1,288</b>
<b>Department of English</b>	<b>21</b>	<b>19</b>	<b>18</b>	<b>18</b>	<b>18</b>
English	21	19	18	18	18
<b>Division of Global History, Languages &amp; Philosophy</b>	<b>33</b>	<b>9</b>	<b>15</b>	<b>-</b>	<b>42</b>
History	33	9	15	-	42
<b>Dept. of Environmental Engr. and Earth Sciences</b>	<b>18</b>	<b>30</b>	<b>48</b>	<b>51</b>	<b>168</b>
Earth & Environmental Sciences	15	-	-	-	-
Sustainability	3	30	48	51	168
<b>Department of Math &amp; Computer Science</b>	<b>49</b>	<b>44</b>	<b>34</b>	<b>67</b>	<b>46</b>
Computer Science	6	-	6	3	-
Mathematics	43	44	28	64	46
<b>Passan School of Nursing</b>	<b>1,234</b>	<b>1,299</b>	<b>1,395</b>	<b>1,442</b>	<b>1,803.5</b>
Nursing	1,234	1,299	1,395	1,442	1,803.5
<b>Nesbitt School of Pharmacy</b>	<b>4,652</b>	<b>4,485</b>	<b>4,836</b>	<b>4,932</b>	<b>5,104.5</b>
Pharmacy	4,652	4,485	4,836	4,932	5,104.5
<b>Total</b>	<b>59,034</b>	<b>48,650</b>	<b>42,971</b>	<b>37,924</b>	<b>34,852</b>



## **Student Development**

The Student Development Office offers educational and social experiences that enhance the quality of student life and learning. A few of the programs offered include the Cultural Series and Adventure Education program, which both provide meaningful out of the classroom learning experiences. The Cultural Series introduces students to the world of art and performance by providing several opportunities each semester to experience visual art, music, theater and dance both locally and in larger Metropolitan areas such as New York City, Philadelphia and Washington DC. The Adventure Education program is an alternative learning experience designed to challenge students to engage in physically demanding activities that emphasize wellness and provide practical leadership tools and lessons on teamwork. Students will have the opportunity to sign up for adventures such as white water rafting, skydiving, hiking and mountain biking.

The Student Development Office also coordinates a weekend entertainment series, which gives students a variety of entertainment options to choose from each weekend. A few of the weekly attractions include free bowling, discounted movie passes and free admittance to local performances at the Little Theater of Wilkes-Barre. In addition, Student Development also coordinates periodic day trips to professional sporting events and theme parks. Several of the University's clubs are listed below.

### **Clubs and Organizations**

Air Force ROTC	Fencing Club	Pre-Law Club
Air & Waste Mgt. Assn.	Free Spirit Club	Pre-Pharmacy Club
Alternative Spring Break	Health & Fitness Club	Pre-Professional Health Club
Amateur Radio Club	Hindu Spirituality Club	Programming Board
Amnicola	History Club	PSEA Education Club
Anime Club	Hockey Club	Psychology Club
Art Club	IEEE Club	Robotics Club
ASME	Indian Cultural Association	Rock Climbing Club
BACCHUS	International Services Club	Rowing Club
The Beacon	Inter-Resident Hall Council	Running Club
Biology Club	Islamic Interest Society	Saudi Interest Club
Cheerleading	Lacrosse Club	Self Defense Club
Chemistry Club	Longboarding Club	Ski Club
Choral Club	Marketing Club	Society for the Advancement SAM
Christian Fellowship Club	MANUSCRIPT	Society of Automotive Engineers
College Democrats Club	Math Club	Society of Women Engineers
College Republicans	MBA Student Association	Sociology Club
Comic Book Club	Medieval Renaissance Club	Spanish Club
Communications Club	MENC Music Club	Student Alumni Association
Commuter Council	Multicultural Student Coalition	Student Health Advisory
Dance Team	Nursing Student Organization	Students for Envir. Sustainability
Debate Society	Off-Campus Council	Studio 20
Delta Epsilon Chi	PA Pharmacists Association	Swimming Club
Earth and Envir. Sciences Club	PA Society of Prof. Engineers	Television Club
ENACTUS	Paintball Club	Ultimate Frisbee
Environmental Club	Personal Finance Club	Wilkes African Cultural Association
Equestrian Club	Pool Players Club	Wilkes in the World

Source: Student Affairs

## ***Leadership Institute***

The Student Affairs Leadership Institute, which functions as the coordinating body for all Student Affairs leadership programs, provides continuous opportunities to enhance the leadership skills of students and members of the community. By offering a variety of leadership programs that promote self-awareness, problem solving, service learning and multicultural issues, the Institute empowers students to explore their own personal leadership style. A few of the programs and services offered by the Institute include: Intercollegiate Leadership Wilkes-Barre, National Society of Leadership & Success Speaker Series, Sigma Alpha Pi Honor Society, Leadership Assessments, and a Step-Up Rock Wall and Ropes courses.

Source: Student Affairs

## ***University College Programs and Services***

ACT 101 Program	A program funded by the Pennsylvania Department of Education to provide academic support and guidance for eligible students.
Advising Services	University College coordinates services for faculty and students to support the advising process. This includes providing advising for “deciding” students and for those who intend to apply for restricted majors.
Career Services	The Office of Career Services offers comprehensive career education and support for professional career development for the Wilkes community.
Disability Support Services	Staff coordinates services and support for self-identified and certified students with disabilities.
First Year Program	A program for first-year students who may benefit from a guided transition to college studies.
Learning Skills Program	This program provides one-on-one assistance as well as workshops and presentations designed to support student success.
Prior Learning Assessment (PLA)	UC coordinates the process to award credit for life experience and serves as the point of contact for interested students.
Supplemental Instruction	Supplemental instruction is intensive academic support available for a number of courses for which review sessions have been deemed particularly beneficial.
Peer Tutoring	Free tutoring assistance is available to all undergraduate students enrolled at Wilkes. Tutoring is available in most courses at the introductory level as well as some other high-demand courses.
Transfer Student Support Services	UC monitors and provides assistance for transfer students to support their success at the University.
Upward Bound Program	This federally-funded program offers a comprehensive educational experience for financially-eligible high school students who are first-generation college-bound students.

Source: University College

## ***Civic Engagement***

A liberal arts education teaches students to look at the world as a whole, to begin making connections between things like interpersonal conflict and international relations, between education and poverty, between thinking about themselves to thinking about “me in the world.” The Civic Engagement Office coordinates projects that bridge service and learning. Many academic departments offer Service-Learning courses that integrate classroom theory and hands-on experience with a pressing social issue. Service-Learning is a pedagogically structured learning experience that combines academic coursework and community service to provide students with the opportunities to transfer the skills taught in the classroom to the “real” world. Ideally, students work with community partners to identify strengths and areas of need, develop and implement projects that enhance those strengths or that meet identified needs, and then reflect on the value of the experience for the community and themselves. Through guided reflection, students gain further understanding of course content, a broader appreciation of the discipline, and an enhanced sense of civic responsibility. In 2014, 950 students engaged in academic Service-Learning. One of the most highly regarded service-learning offerings is taught in the First Year Foundations (FYF) course “Be the Change.” This course focuses on collecting and recording the oral histories of veterans, spouses and dependents in Luzerne County. Over the past three years the FYF class has recorded over 250 oral histories from veterans ranging from WWII to the current conflict.

In addition to the in-class service-learning, Wilkes students, staff and faculty contributed over 64,000 hours of community service by exploring issues of hunger and homelessness, at-risk youth, access to health care, environmental sustainability, and countless other service experiences. The students of Wilkes partner with numerous organizations including The American Cancer Society, the American Red Cross, the Commission on Economic Opportunity (CEO), the Disaster Recovery Coalition of Luzerne County, the United Way, and the Victims Resource Center.

Students extend Wilkes’ spirit of service beyond local borders by volunteering during Alternative Fall Break in Northeastern Pennsylvania, and traveling domestically and internationally to serve during Spring Break. In spring students will have the opportunity to interview for one of three trip offerings. Students have the opportunity to travel with faculty and staff mentors to Kentucky to work with Christian Appalachian Project, a program that matches homeowners with building teams, and Dominican Republic to work on public health programs and teach English as a second language in the school system with Guanin El Centro Cultural Toristico. Also the civic engagement office is partnering with a political science faculty to sustain, the Costa Rica service-learning experience with Raising Awareness Worldwide. In extraordinary ways, Wilkes students are leading, mentoring, learning, and changing the world through service.

## ***Career Placement of 2014 Bachelor's Graduates***

Working full-time/full-time military career	73%
Attending full-time graduate/professional schools	22%
Working part-time, attending graduate school part-time	2%
Seeking employment	3%

### **Employer Locations**

Northeastern Pennsylvania	52%
Other Pennsylvania cities	21%
New York, New Jersey	10%
Other states, international	17%

### **Graduate/Professional Schools**

In Pennsylvania	67%	(34% in Northeastern PA)
In other states or international	33%	

### **Relationship of Employment to Academic Major**

Closely related	75%
Somewhat related	16%
Not related	9%

## **Athletics**

Wilkes sponsors an active intramural sports program as well as intercollegiate competition in 19 varsity sports. Varsity teams compete at the Division III level. The University is a member of the National Collegiate Athletic Association (NCAA), Middle Atlantic Conference (MAC), the Freedom Conference, the Eastern Collegiate Athletic Conference (ECAC), and the Metropolitan Conference for Wrestling. There were 421 student athletes on the roster for the 2014-15 season.

### **Varsity Programs**

#### **Men**

Baseball  
Basketball  
Cross Country  
Football  
Golf  
Lacrosse  
Soccer  
Swimming  
Tennis  
Wrestling

#### **Women**

Basketball  
Cross Country  
Field Hockey  
Golf  
Lacrosse  
Soccer  
Softball  
Swimming  
Tennis  
Volleyball

### **Athletic Department Statistics 2014-15**

	<b><u>Wins</u></b>	<b><u>Losses</u></b>
Baseball	18	20
Men's Basketball	12	13
Women's Basketball	10	14
Field Hockey	9	9
Football	2	8
Women's Lacrosse	10	5
Men's Soccer	4	15
Women's Soccer	12	9
Softball	13	21
Men's Tennis	20	3
Women's Tennis	18	2
Volleyball	13	18
Wrestling	15	5

Source: Athletics

## FACULTY and STAFF

### *Staff by Category and Gender*

	Fall 2015							Fall 2014
	Admin.	Clerical	Maint./ Custodial	Public Safety	Coach	IT	Total	Total
<b>Full-time Staff</b>								
Male	65	2	33	19	10	16	145	146
Female	141	64	14	7	3	4	233	218
<b>Total</b>	<b>206</b>	<b>66</b>	<b>47</b>	<b>26</b>	<b>13</b>	<b>20</b>	<b>378</b>	<b>364</b>
<b>Part-time Staff</b>								
Male	23	1	1	6	16	0	47	48
Female	41	3	0	0	9	0	53	53
<b>Total</b>	<b>64</b>	<b>4</b>	<b>1</b>	<b>6</b>	<b>25</b>	<b>0</b>	<b>100</b>	<b>101</b>
<b>Total Staff</b>								
Male	88	3	34	25	26	16	192	194
Female	182	67	14	7	12	4	286	271
<b>Total</b>	<b>270</b>	<b>70</b>	<b>48</b>	<b>32</b>	<b>38</b>	<b>20</b>	<b>478</b>	<b>465</b>

## Faculty by Gender and Tenure Status

Full-time Faculty	Fall 2015			Fall 2014
	Male	Female	Total	Total
Professors	25	8	33	33
Associate Professors	39	31	70	73
Assistant Professors*	21	25	46	45
Faculty of Practice***	3	10	13	11
Visiting**	6	5	11	10
<b>Total Full-time Faculty</b>	<b>94</b>	<b>79</b>	<b>173</b>	<b>172</b>

\* Includes one ¼ Asst. Professor

\*\*Includes four Visiting Instructors, six Visiting Asst. Professors and one Visiting Assoc. Professor

\*\*\*Includes one ¼ Faculty of Practice

	Fall 2015			Fall 2014
	Male	Female	Total	Total
<b>Tenured</b>				
Professor	25	8	33	33
Associate Professor	37	31	68	71
Assistant Professor	-	-	-	1
<b>Total Tenured</b>	<b>62</b>	<b>39</b>	<b>101</b>	<b>105</b>
<b>Tenure Track</b>				
Associate Professor	2	-	2	2
Assistant Professor	20	24	44	41
<b>Total Tenure Track</b>	<b>22</b>	<b>24</b>	<b>46</b>	<b>43</b>
<b>Not on Tenure Track</b>				
Assistant Professor	1	-	1	1
Assistant Professor ¾- time	-	1	1	2
Faculty of Practice	3	9	12	10
Faculty of Practice ¾-time	-	1	1	1
<b>Total Not on Tenure Track</b>	<b>4</b>	<b>11</b>	<b>15</b>	<b>14</b>
<b>Visiting</b>				
Associate Professor	1	-	1	-
Assistant Professor	4	2	6	5
Assistant Professor 3/4	-	-	-	1
Instructor	1	3	4	4
<b>Total Visiting</b>	<b>6</b>	<b>5</b>	<b>11</b>	<b>10</b>
<b>Total Full-time Faculty</b>	<b>94</b>	<b>79</b>	<b>173</b>	<b>172</b>

<b>Part-time Faculty</b>	<b>Fall 2015</b>			<b>Fall 2014</b>
	<b>Male</b>	<b>Female</b>	<b>Total</b>	<b>Total</b>
<b>Not on Tenure Track</b>				
Undergraduate	37	58	95	89
Graduate	26	49	75	53
<b>Total Part-time Faculty</b>	<b>63</b>	<b>107</b>	<b>170</b>	<b>142</b>

**Full-time Faculty by Department**

<b>Department</b>	<b>Fac of</b>					<b>Total</b>	<b>On Tenure Track</b>	
	<b>PR</b>	<b>Assoc PR</b>	<b>Asst PR</b>	<b>Pract</b>	<b>Visiting</b>		<b>Tenured</b>	<b>Track</b>
<b>Biology &amp; Health Sciences</b>	4	5	0	0	0	9	9	0
<b>Behavioral &amp; Social Sciences****</b>	7	5	3	0	1	16	12	3
<b>Business*****</b>	4	7	6	0	3	20	11	6
<b>Chemistry**</b>	0	3	2	1	1	7	3	2
<b>Communication Studies</b>	1	2	2	1	0	6	3	2
<b>Education*****</b>	1	2	1	2	0	6	3	1
<b>Electrical Engineering, Bioengineering &amp; Physics</b>	4	3	2	0	0	9	6	3
<b>Environmental Engineering &amp; Earth Sciences****</b>	4	2	1	0	1	8	6	1
<b>English</b>	0	7	0	1	0	8	7	0
<b>Global History, Languages &amp; Philosophy</b>	1	4	4	0	0	9	5	4
<b>Graduate Education</b>	0	1	5	1	0	7	1	5
<b>IMAD</b>	0	2	0	1	0	3	1	1
<b>Math &amp; Computer Science</b>	1	6	3	1	0	11	7	3
<b>Mechanical Engineering &amp; Engineering Mgt.***</b>	4	0	2	0	3	9	4	2
<b>Nursing*****</b>	0	4	9	3	2	18	4	9
<b>Pharmacy*</b>	2	14	5	1	0	22	16	3
<b>Performing Arts</b>	0	3	1	1	0	5	3	1
<b>Total</b>	<b>33</b>	<b>70</b>	<b>46</b>	<b>13</b>	<b>11</b>	<b>173</b>	<b>101</b>	<b>46</b>

\* Includes one 3/4 Asst. Professor

\*\* Includes one Visiting Instructor

\*\*\* Includes one Visiting Asst. Professor, one Visiting Assoc. Professor & one Visiting Instr.

\*\*\*\* Includes one Visiting Asst. Professor

\*\*\*\*\* Includes one 3/4 Faculty of Practice

\*\*\*\*\* Includes three Visiting Asst. Professors

\*\*\*\*\* Includes two Visiting Instructors



### **Full-time Faculty Degrees**

<b>Full-time Faculty with Doctorates</b>	<b>Male</b>		<b>Female</b>		<b>Total</b>	
	<b>N</b>	<b>%</b>	<b>N</b>	<b>%</b>	<b>N</b>	<b>%</b>
Professors	25	100.0%	8	100.0%	33	100.0%
Associate Professors	37	94.9%	29	93.5%	66	94.3%
Assistant Professors	20	95.2%	21	84.0%	41	89.1%
Faculty of Practice	2	66.7%	1	10.0%	3	23.1%
Visiting	5	83.3%	2	40.0%	7	63.6%
<b>Total</b>	<b>89</b>	<b>94.7%</b>	<b>61</b>	<b>77.2%</b>	<b>150</b>	<b>86.7%</b>

<b>Full-time Faculty with Terminal Degrees*</b>	<b>Male</b>		<b>Female</b>		<b>Total</b>	
	<b>N</b>	<b>%</b>	<b>N</b>	<b>%</b>	<b>N</b>	<b>%</b>
Professors	25	100.0%	8	100.0%	33	100.0%
Associate Professors	39	100.0%	31	100.0%	70	100.0%
Assistant Professors	21	100.0%	21	84.0%	42	91.3%
Faculty of Practice	2	66.7%	2	20.0%	4	30.8%
Visiting	5	83.3%	2	40.0%	7	63.6%
<b>Total</b>	<b>92</b>	<b>97.9%</b>	<b>64</b>	<b>81.0%</b>	<b>156</b>	<b>90.2%</b>

*\*Terminal degrees include Master of Business Administration/CPA and Master of Fine Arts.*

## Faculty and Staff by Ethnicity

Faculty	Full-time		Part-Time	
White	140	80.9%	155	91.2%
American Indian/Alaskan	1	0.6%	0	0.0%
Asian	13	7.5%	2	1.2%
Black	3	1.7%	4	2.4%
Hawaiian/Pacific Isl.	0	0.0%	0	0.0%
Hispanic	4	2.3%	3	1.8%
Non-Resident Alien	8	4.6%	0	0.0%
Two or more races	2	1.2%	2	1.2%
Unspecified	2	1.2%	4	2.4%
<b>Total Faculty</b>	<b>173</b>	<b>100.0%</b>	<b>170</b>	<b>100.0%</b>

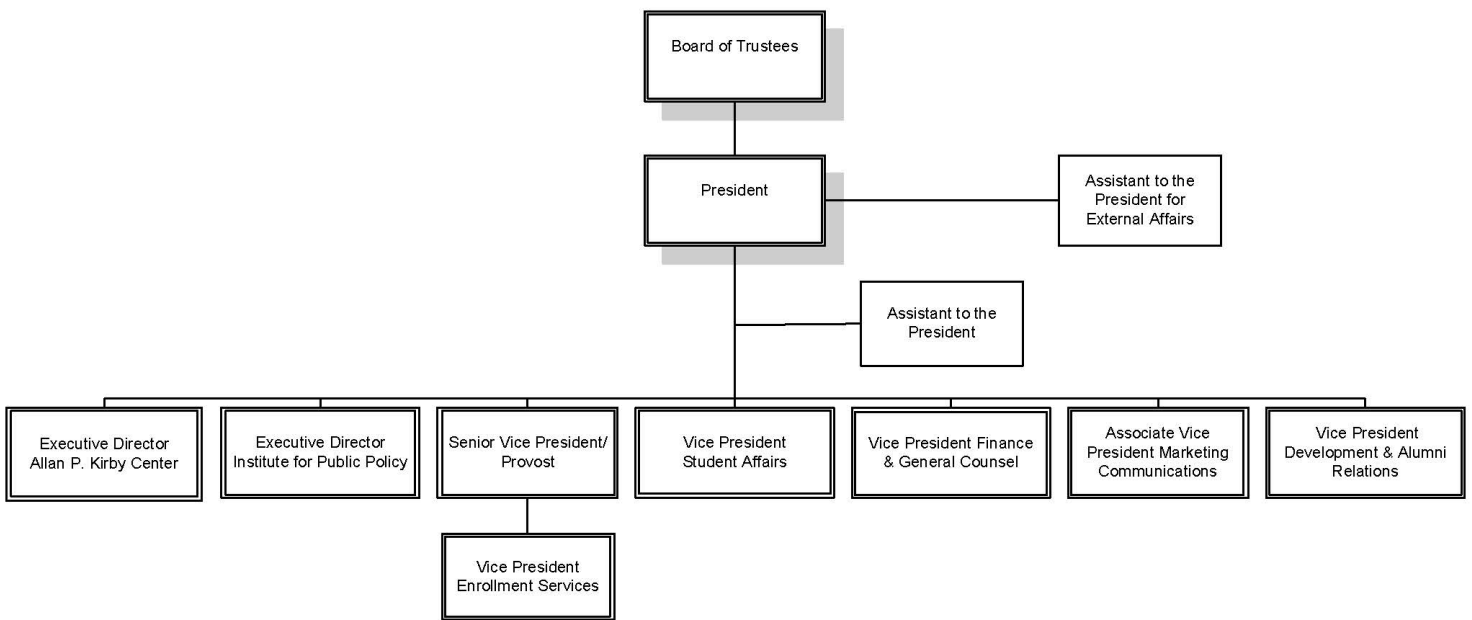
Staff	Full-time		Part-Time	
White	358	94.7%	91	91.0%
American Indian/Alaskan	0	0.0%	0	0.0%
Asian	0	0.0%	3	3.0%
Black	4	1.1%	1	1.0%
Hawaiian/Pacific Isl.	0	0.0%	0	0.0%
Hispanic	7	1.9%	1	1.0%
Non-Resident Alien	0	0.0%	0	0.0%
Two or more races	4	1.1%	3	3.0%
Unspecified	5	1.3%	1	1.0%
<b>Total Staff</b>	<b>378</b>	<b>100.0%</b>	<b>100</b>	<b>100.0%</b>

Total University	Full-time		Part-Time	
White	498	90.4%	246	91.1%
American Indian/Alaskan	1	0.2%	0	0.0%
Asian	13	2.4%	5	1.9%
Black	7	1.3%	5	1.9%
Hawaiian/Pacific Isl.	0	0.0%	0	0.0%
Hispanic	11	2.0%	4	1.5%
Non-Resident Alien	8	1.5%	0	0.0%
Two or more races	6	1.1%	5	1.9%
Unspecified	7	1.3%	5	1.9%
<b>Total University</b>	<b>551</b>	<b>100.0%</b>	<b>270</b>	<b>100.0%</b>

# ORGANIZATIONAL CHARTS

## Administrative

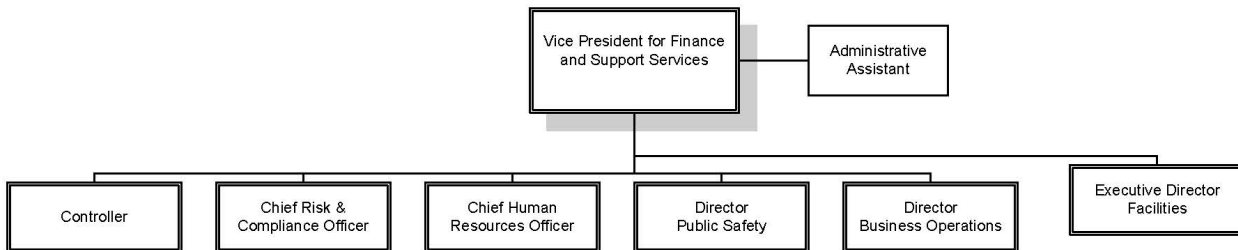
### Wilkes University Administrative Organization



October 2015

**Finance and Support Operations**

**Wilkes University**  
Finance and Support Operations

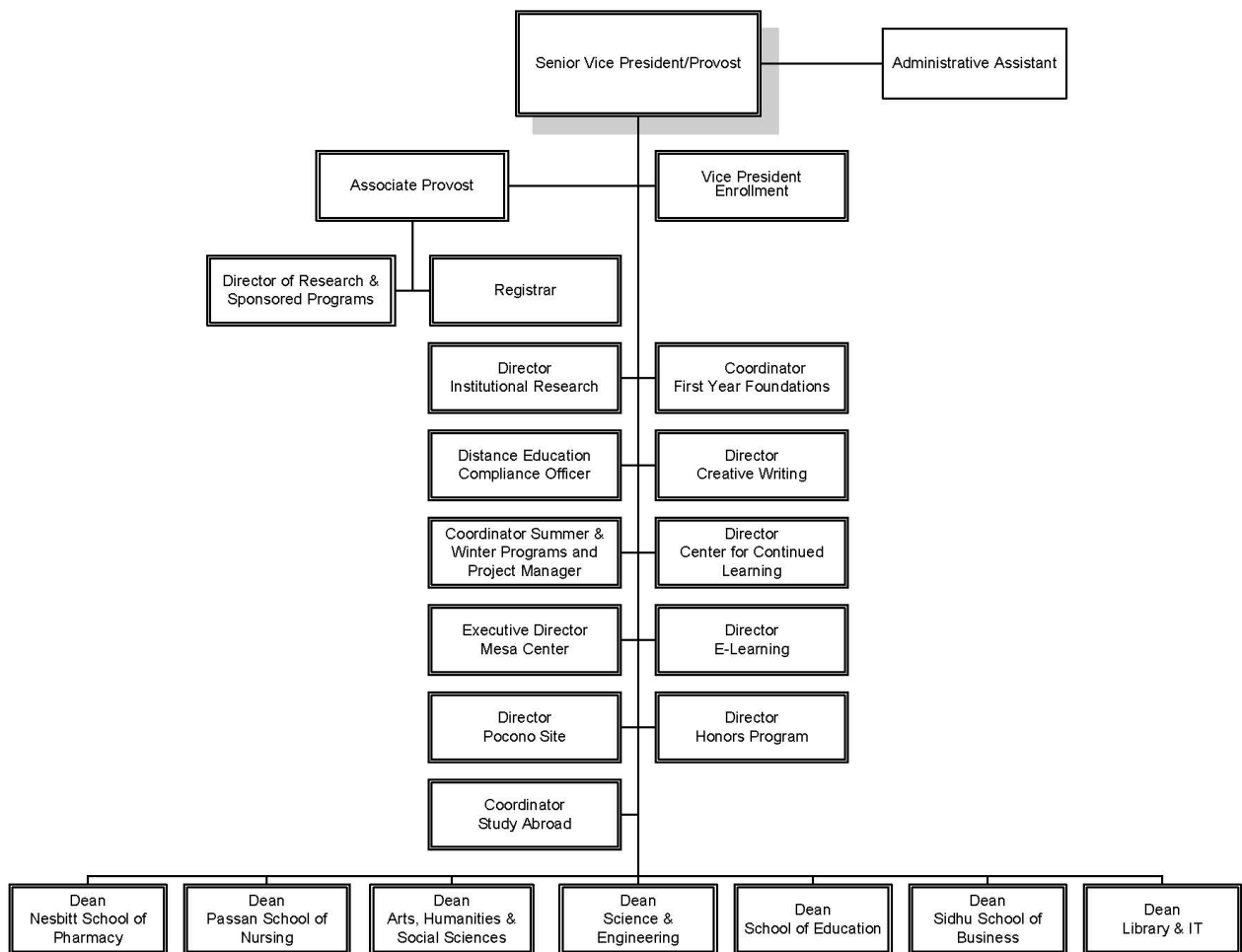


October 2015

**Provost**

# Wilkes University

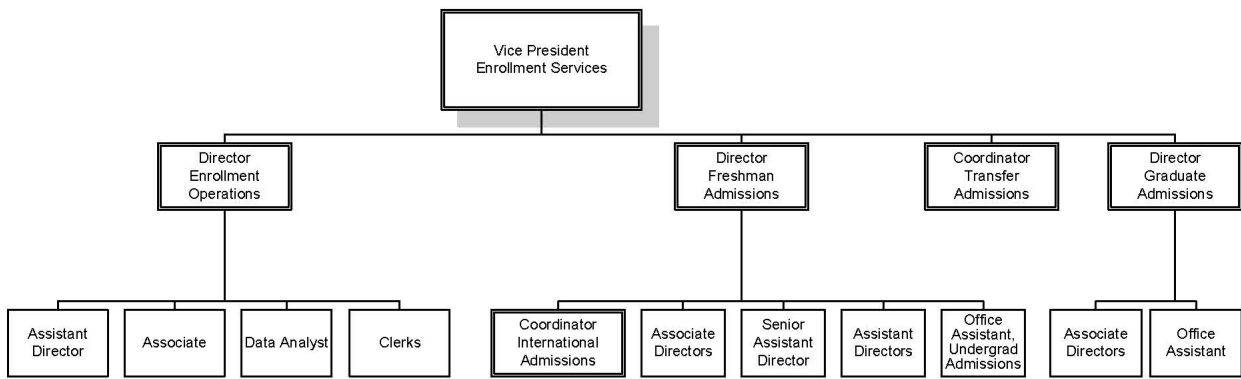
Provost



October 2015

# Enrollment Services

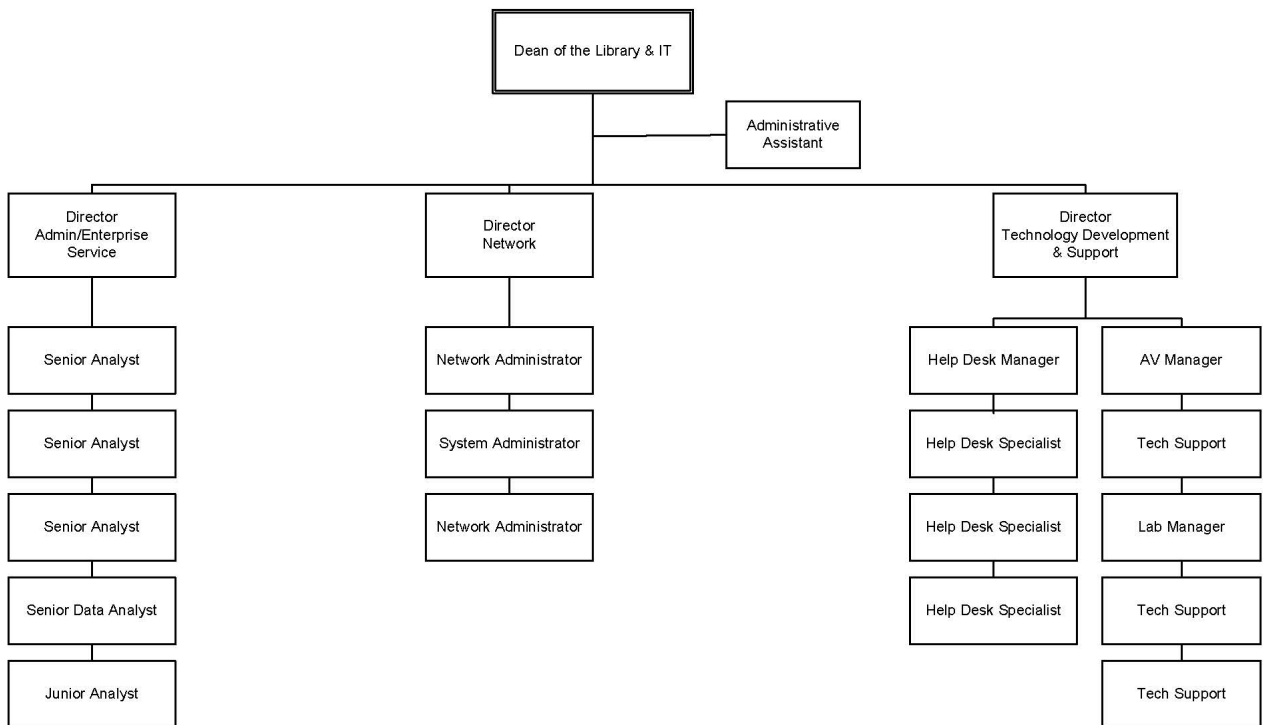
## Wilkes University Enrollment Services



October 2015

**Information Technology Services**

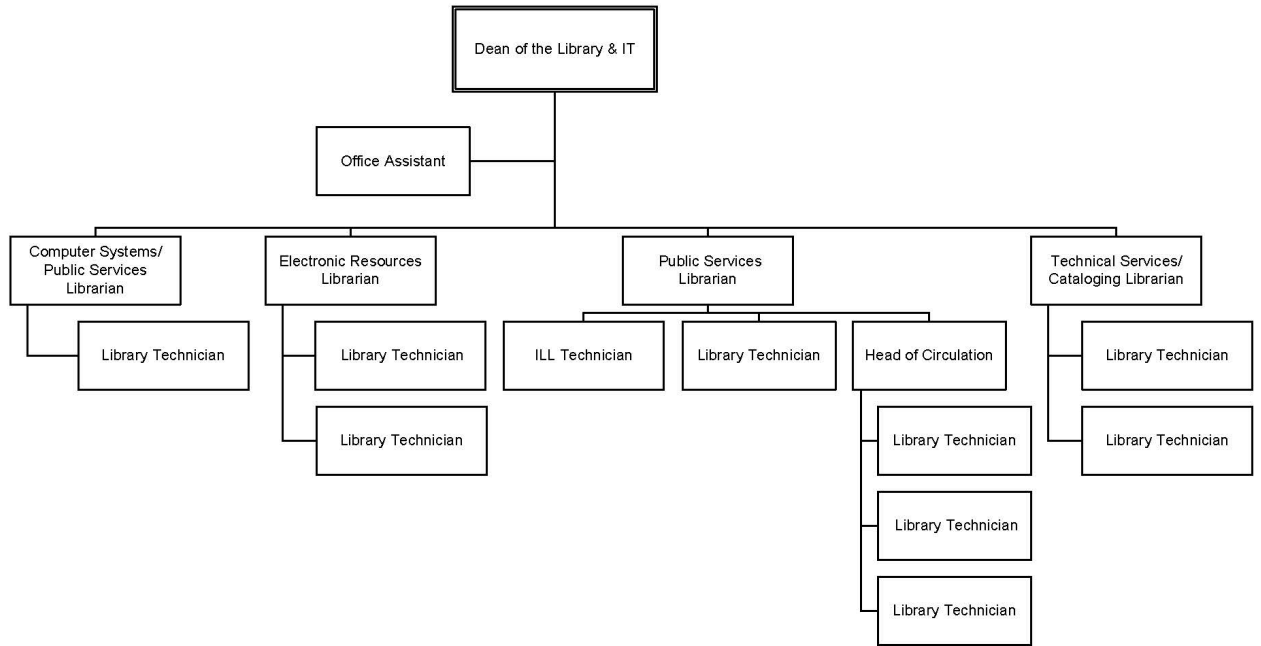
**Wilkes University**  
Information Technology Services



October 2015

**Library**

**Wilkes University**  
Library

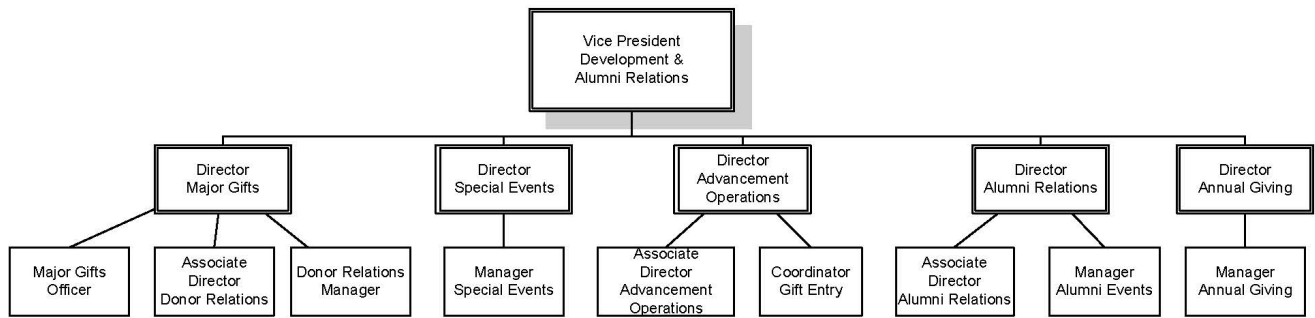


October 2015



**Advancement**

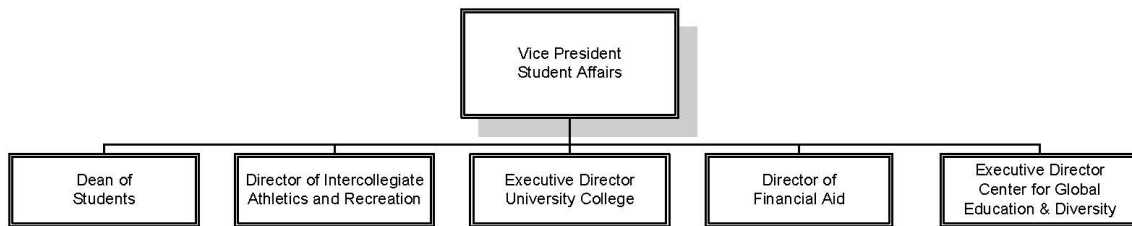
**Wilkes University**  
Advancement



October 2015

**Student Affairs**

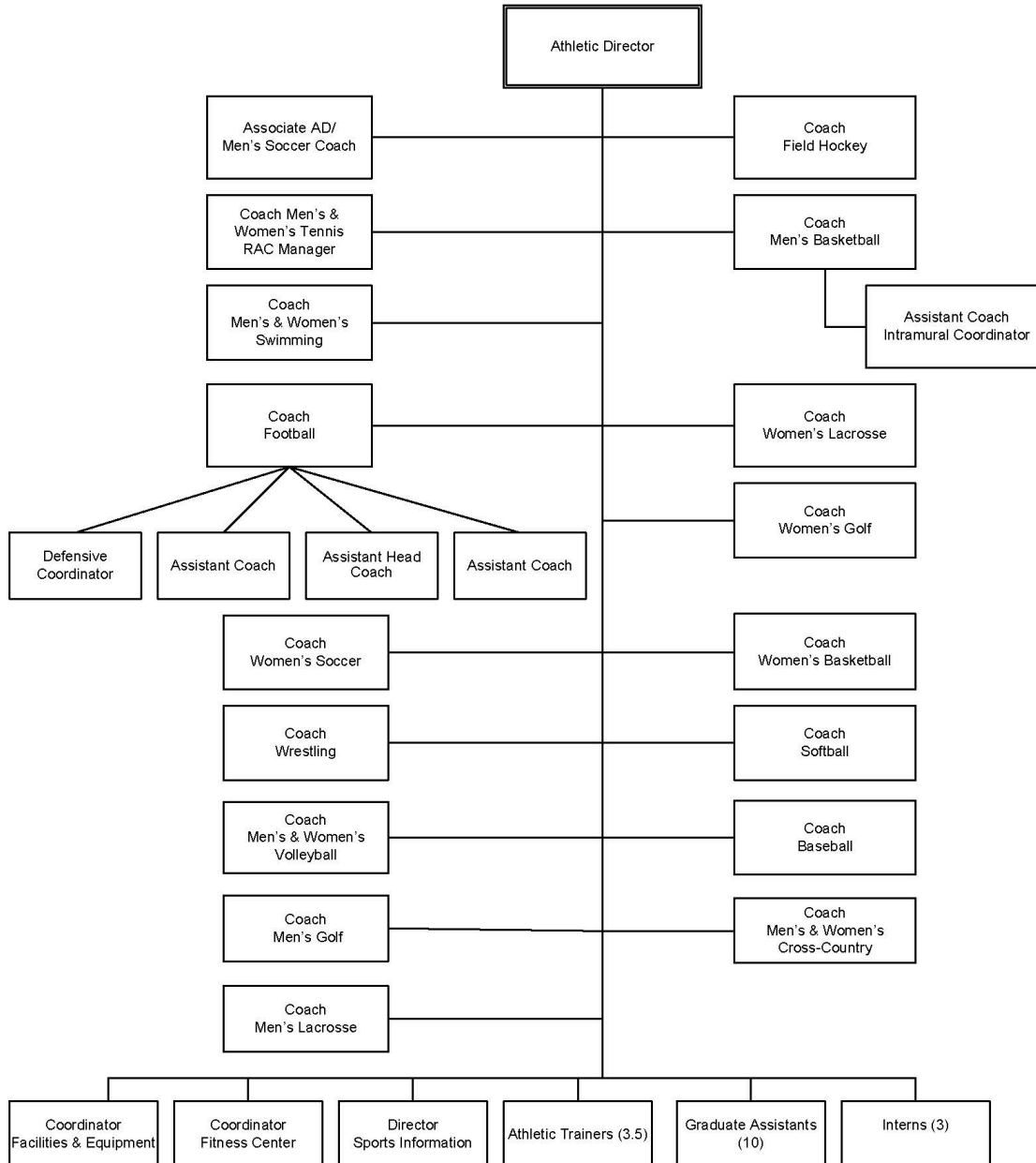
**Wilkes University**  
Student Affairs



October 2015

**Student Affairs – Athletics**

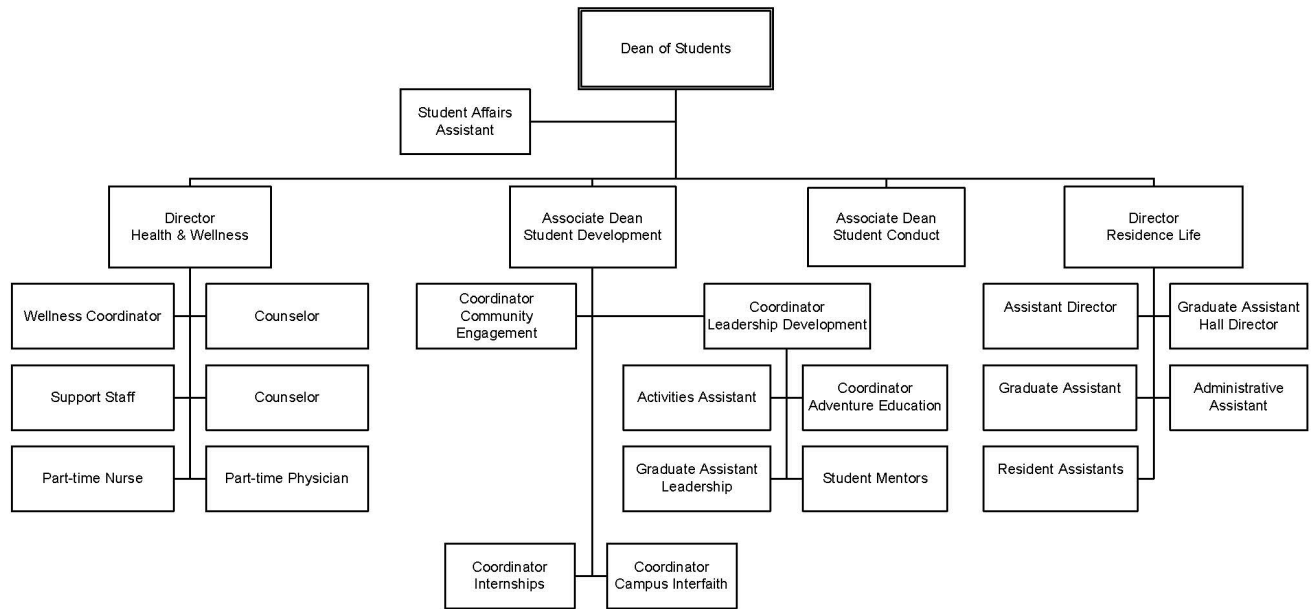
**Wilkes University**  
Student Affairs  
Athletics



October 2015

**Student Affairs – Student Development, Health & Wellness, Residence Life**

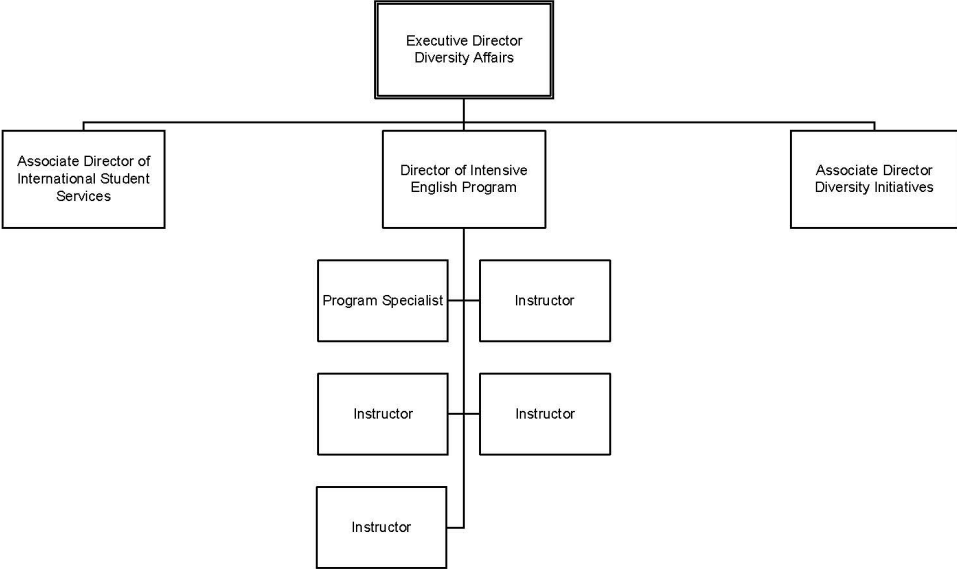
**Wilkes University**  
 Student Affairs  
 Student Development/Health & Wellness/Residence Life



October 2015

**Student Affairs – Diversity Affairs**

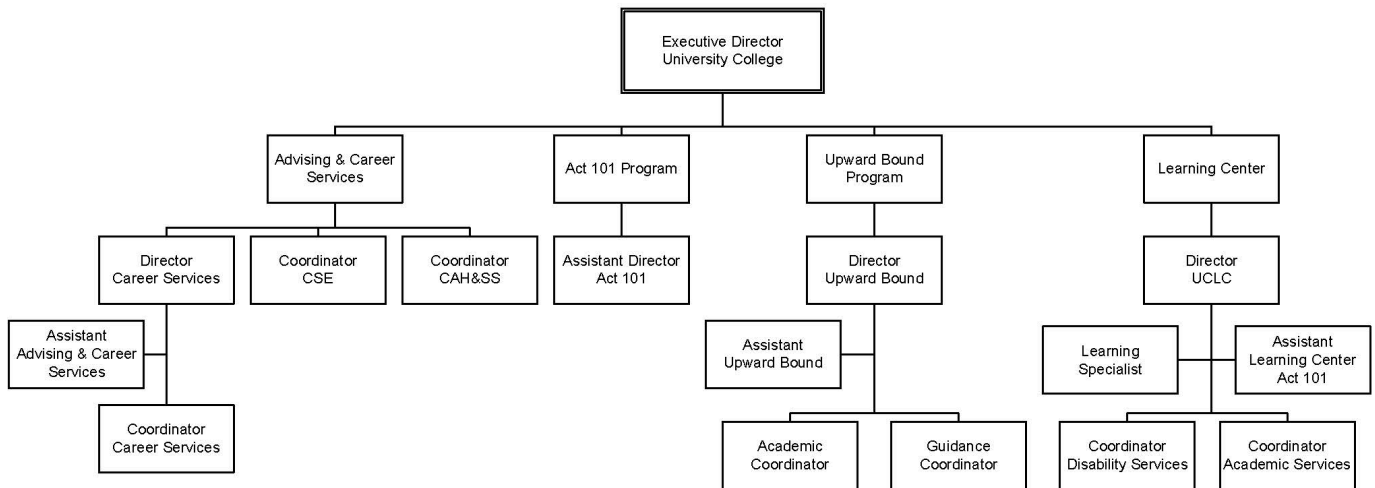
**Wilkes University**  
Student Affairs – Diversity Affairs



October 2015

**Student Affairs – University College**

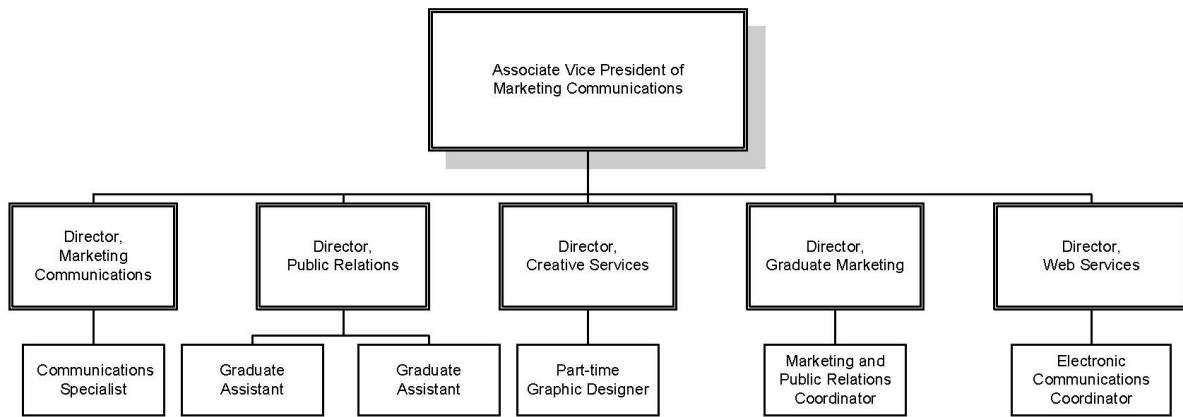
**Wilkes University**  
 Student Affairs  
 University College



October 2015

**Marketing/Communications**

**Wilkes University**  
Marketing/Communications



October 2015

# FINANCES

## Statement of Activities

	<u>FY 2014</u>	<u>FY 2015</u>
	<u>AMOUNT</u>	<u>AMOUNT</u>
<b>REVENUES AND OTHER SUPPORT</b>		
Tuition and Fees	\$ 93,059,299	\$ 96,370,763
Less Scholarship Aid	(29,037,152)	(30,282,243)
<b>NET TUITION &amp; FEES</b>	<b>64,022,147</b>	<b>66,088,520</b>
Government Grants and Contracts	2,348,916	2,105,129
Private Gifts, Grants & Contracts	1,519,715	2,101,858
Sales and Services of Auxiliary Enterprises	12,526,486	11,945,096
Income from Interest and Dividends	698,839	823,374
Other Additions	870,463	943,881
Endowment Income Designated for Current Operations	1,675,800	1,636,500
<b>TOTAL REVENUES AND OTHER SUPPORT</b>	<b>\$ 83,662,366</b>	<b>\$ 85,644,358</b>
<b>EXPENDITURES</b>		
Instruction	\$ 33,631,802	\$ 35,941,175
Research	1,304,740	1,283,671
Public Service	873,537	878,832
Academic Support	9,545,667	10,026,290
Student Services	11,977,841	12,290,921
Institutional Support	12,130,097	14,037,415
Auxiliary Enterprises	9,142,150	9,489,630
<b>TOTAL EXPENSES</b>	<b>\$ 78,605,834</b>	<b>\$ 83,947,934</b>
Increase in Net Assets from Operating Activities	\$ 5,056,532	\$ 1,696,424
<b>NON-OPERATING INCOME (EXPENSES)</b>		
Private Gifts and Grants	962,136	801,888
Grants for Property, Plant and Equipment	-	1,000,000
Net Investment Return After Application of Spending Policy	2,808,379	(951,775)
Changes in Liabilities Under Split Interest Agreements and Perpetual Trusts	327,426	18,131
Impairment Charge	-	(285,638)
Increase(Decrease) in Net Assets from Non-Operating Activities	\$ 4,097,941	\$ 582,606
<b>TOTAL CHANGE IN NET ASSETS</b>	<b>\$ 9,154,473</b>	<b>\$ 2,279,030</b>
Net Assets, Beginning of Year	\$ 94,802,980	\$103,957,453
Net Assets, End of Year	<b>\$103,957,453</b>	<b>\$106,236,483</b>

Source: Audited Financial Statements 5/31/15



## ***Endowment and Other Long-Term Investments***

(At fair market value)

	<u>5/31/2014</u>	<u>5/31/2015</u>
<b>Endowment and Similar Funds:</b>		
Cash and cash equivalents	\$ 2,140,417	\$ 2,604,164
Fixed income investments	8,603,433	8,113,580
Common, preferred stocks and equity funds	26,838,568	26,702,425
Alternative investments	6,139,835	5,988,449
Total	<u>\$ 43,722,253</u>	<u>\$ 43,408,917</u>
<b>Annuity and Life Income Funds:</b>		
Cash and cash equivalents	\$ 20,412	\$ 12,884
Fixed income investments	86,690	86,581
Bonds, notes and bond funds	63,678	68,449
Common, preferred stocks and equity funds	427,430	448,715
Alternative Investments	71,123	55,177
Total	<u>\$ 669,333</u>	<u>\$ 671,807</u>
<b>Total Endowment and Similar Funds</b>	<u><b>\$ 44,391,586</b></u>	<u><b>\$ 44,080,424</b></u>
<b>Investments:</b>		
Current Funds:		
Cash and cash equivalents	\$ 13,096	\$ 26,804
Bonds, notes and bond funds	179,807	172,879
Common, preferred stocks and equity funds	494,559	517,217
Total Investments	<u>\$ 687,462</u>	<u>\$ 716,901</u>
<b>Deposits with Bond Trustee:</b>		
Cash and cash equivalents	<u>\$ 3,785,543</u>	<u>\$ 3,785,691</u>
Total Deposits	<u>\$ 3,785,543</u>	<u>\$ 3,785,691</u>
<b>Total Endowment, Investments and Similar Funds</b>	<u><b>\$ 48,864,591</b></u>	<u><b>\$ 48,583,016</b></u>

Source: Audited Financial Statements 5/31/15

## Tuition, Fees, Room and Board Charges

### Undergraduate

<b>FULL-TIME</b>	<b>(Annual):</b>	<b><u>FY2012</u></b>	<b><u>FY2013</u></b>	<b><u>FY2014</u></b>	<b><u>FY2015</u></b>	<b><u>FY2016</u></b>
	Full-time Tuition (12-18 Credits per semester)	\$26,834	\$27,908	\$28,884	\$29,750	\$30,792
	Fees	\$1,376	\$1,418	\$1,466	\$1,512	\$1,564
	<b>Total Tuition &amp; Fees</b>	<b>\$28,210</b>	<b>\$29,326</b>	<b>\$30,350</b>	<b>\$31,262</b>	<b>\$32,356</b>
<b>PART-TIME</b>	<b>(Per Credit Hour)</b>					
	Tuition	\$745	\$775	\$802	\$826	\$855
	Fees	62	64	66	68	70
	<b>Total Cost</b>	<b>\$807</b>	<b>\$839</b>	<b>\$868</b>	<b>\$894</b>	<b>\$925</b>

### First Professional

<b>FULL-TIME</b>	<b>(Annual)</b>					
	Full-time Tuition (12-18 Credits per semester)	\$28,520	\$29,660	\$30,698	\$31,618	\$32,724
	Fees	1,376	1,418	1,466	1,512	1,564
	Clerkship Fee	1,000	1,030	-	-	-
	Pharmacy Professional Fee (maximum rate)	-	-	1,850	1,800	1,800
	<b>Total Tuition &amp; Fees</b>	<b>\$30,896</b>	<b>\$32,108</b>	<b>\$34,014</b>	<b>\$34,930</b>	<b>\$36,088</b>

### Room and Board

<b>Room</b>	Residence Hall - Apartment Style	\$7,782	\$8,016	\$8,296	\$8,544	\$8,844
	Residence Hall - Dorm	7,018	7,228	7,480	7,704	7,974
	Residence Hall – Single Room	7,374	7,596	7,862	8,098	8,382
<b>Board</b>	Colonel Gold Plus (19 meals per week)	\$4,680	\$4,806	\$4,956	\$5,104	\$5,292
	Colonel Blue Plus	4,186	4,296	4,428	4,560	4,720
	Colonel Gold	4,580	4,706	4,856	5,002	5,192
	Colonel Blue	3,986	4,096	4,228	4,354	4,520
	Senior	2,042	2,080	2,126	2,190	2,294

### Master's Programs

<b>(Per Credit Hour Tuition)</b>	<b><u>FY2012</u></b>	<b><u>FY 2013</u></b>	<b><u>FY2014</u></b>	<b><u>FY2015</u></b>	<b><u>FY2016</u></b>
MA/MFA Creative Writing	\$622	\$634	\$647	\$647	\$647
MBA Business Administration	\$740	\$755	\$770	\$794	\$822
MS Bioengineering	\$811	\$827	\$844	\$870	\$900
MS Education	\$395	\$403	\$411	\$423	\$438
MS Engineering Management	\$740	\$755	\$770	\$794	\$822
MS Electrical Engineering	\$811	\$827	\$844	\$870	\$900
MS Mechanical Engineering	\$811	\$827	\$844	\$870	\$900
MS Mathematics	\$811	\$827	\$844	\$870	\$900
MS Nursing	\$500	\$510	\$520	\$536	\$625

### Doctoral Programs

<b>(Per Credit Hour Tuition)</b>	<b><u>FY2012</u></b>	<b><u>FY 2013</u></b>	<b><u>FY2014</u></b>	<b><u>FY2015</u></b>	<b><u>FY2016</u></b>
Doctorate of Nursing Program	\$709	\$723	\$737	\$759	\$840
EdD Program	\$494	\$554	\$565	\$581	\$602

## Tuition Comparison, Wilkes and Other Institutions

Tuition and Fees	<u>2012-13</u>	<u>2013-14</u>	<u>2014-15</u>	<u>2015-16</u>	<u>% most recent increase</u>
<b>Wilkes University</b>	<b>\$29,326</b>	<b>\$30,350</b>	<b>\$31,262</b>	<b>\$32,356</b>	<b>3.5%</b>
Bloomsburg University	8,344	8,582	8,914	9,326	4.6%
Drexel University****	36,090	37,505	47,051	48,791	3.7%
Duquesne University	30,034	31,385	32,636	33,778	3.5%
East Stroudsburg University	8,494	9,005	9,362	9,684	3.4%
Elizabethtown College	36,550	38,200	39,920	41,710	4.5%
Fairleigh Dickinson University (Main Campus)	33,792	34,878	35,880	36,910	2.9%
King's College	29,174	30,310	31,816	33,090	4.0%
Kutztown University	8,596	8,819	8,833	9,145	3.5%
Lebanon Valley College	34,470	35,700	37,470	39,030	4.2%
Lock Haven University	8,564	8,898	9,276	9,665	4.2%
Luzerne County Community College (30 cr hrs)	3,600	4,140	4,590	4,770	3.9%
Lycoming College	32,676	33,756	34,706	35,900	3.4%
Mansfield University	8,926	9,192	9,526	9,806	2.9%
Marywood University	29,380	30,690	31,695	32,692	3.1%
Millersville University*****	8,600	8,866	10,268	10,918	6.3%
Misericordia University	27,230	28,210	29,010	29,840	2.9%
Moravian College	34,484	35,518	37,572	38,832	3.4%
Penn State University- University Park***	16,444	16,992	17,502	17,514	0.1%
Penn State Wilkes-Barre***	13,238	13,354	13,588	13,598	0.1%
Rutgers University (New Brunswick)**	13,073	13,499	13,813	14,131	2.3%
Shippensburg University	9,154	9,448	9,774	10,052	2.8%
Susquehanna University	37,280	38,780	40,350	42,040	4.2%
Temple University	13,596	14,096	14,696	15,096	2.7%
University of Delaware*	28,772	29,932	30,692	31,420	2.4%
University of Pittsburgh	16,590	17,100	17,772	18,192	2.4%
University of Scranton	37,456	38,754	39,956	41,044	2.7%
University of the Sciences in Philadelphia	33,406	34,742	36,096	37,466	3.8%
West Chester University	8,620	8,850	9,144	9,462	3.5%

\* Non-resident tuition

\*\* NJ resident

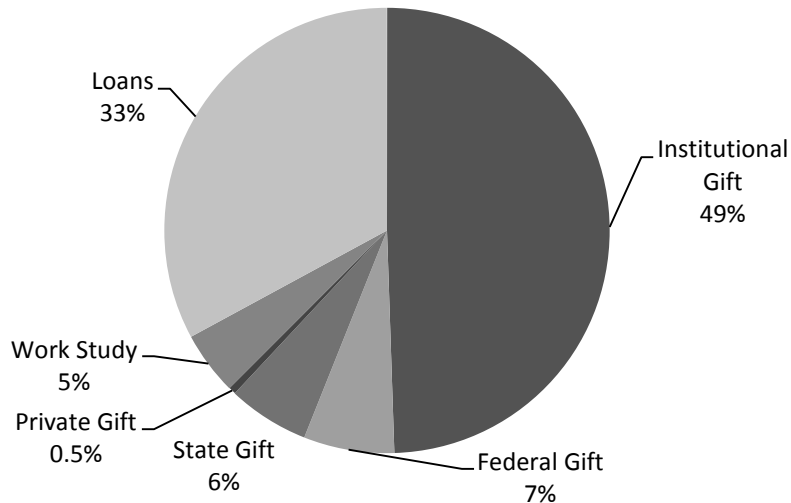
\*\*\* PA resident

\*\*\*\* Effective 2014-15 students are charged per quarter term. Cost shown is for 3 quarter terms.

\*\*\*\*\*Effective 2014-15 students charged per credit hour. Cost shown is for 12 credits.

## Student Financial Aid

### Financial Aid Awarded to Fall 2015 Full-Time Undergraduate Students\* by Source



Percentage of Full-Time Undergraduates* Awarded Some Form of Financial Aid	89.7%
Percentage of First-Time Full-Time Freshmen Awarded Some Form of Financial Aid	96.9%
Percentage of First-Time Full-Time Freshmen Receiving PELL Grant	40.4%
Average Financial Aid Package Awarded to Full-Time Undergraduate Students* (including work study and loans to students)	\$33,582
Percentage of 2015 Bachelor's Degree Recipients Who Borrowed	84%
Estimated Average Indebtedness of 2015 Bachelor's Degree Recipients Who Borrowed	\$38,049
Percentage of 2015 Doctor of Pharmacy (D.Ph.) Degree Recipients Who Borrowed	83%
Estimated Average Indebtedness of 2015 D.Ph. Degree Recipients Who Borrowed	\$89,993

\* Includes first- and second-year students in the School of Pharmacy

## ***Wilkes Alumni***

### **Alumni by Graduation Year**

<b>Graduation Year</b>	<b>Total Graduates</b>	<b>Advanced Degrees</b>	<b>Undergrad Degrees</b>	<b>Undergrad Alumni of Record*</b>	<b>% of Solicitable Undergraduates</b>
<b>1935-1939</b>	353	0	353	15	12.9%
<b>1940-1949</b>	1,183	1	1,182	158	29.5%
<b>1950-1959</b>	2,785	2	2,783	819	47.6%
<b>1960-1969</b>	3,362	20	3,342	2,093	75.2%
<b>1970-1979</b>	5,369	279	5,090	3,561	75.7%
<b>1980-1989</b>	5,437	729	4,708	3,721	82.1%
<b>1990-1999</b>	5,898	1,281	4,617	4,151	91.4%
<b>2000-2009</b>	11,208	6,975	4,233	3,876	92.1%
<b>2010-2015</b>	8,699	5,964	2,735	2,661	97.4%
<b>Total</b>	<b>44,294</b>	<b>15,251</b>	<b>29,043</b>	<b>21,055</b>	<b>81.7%</b>

\* Undergraduate Alumni of Record is comprised of solicitable alumni excluding advanced degrees, deceased, inactive home addresses & those requesting no contact or solicitation.

### ***Alumni Giving***

	<b>2010-11</b>	<b>2011-12</b>	<b>2012-13</b>	<b>2013-14</b>	<b>2014-15</b>
<b>Undergraduate Alumni of Record</b>	19,955	20,286	20,336	20,118	20,440
<b>Undergraduate Alumni Donors</b>	2,640	2,765	2,961	2,651	2,866
<b>Alumni Giving Rate</b>	13.2%	13.6%	13.2%	13.2%	14.0%

Source: Advancement Division

***Funds Raised***  
**(Cash Basis)**

<b><u>By Source</u></b>	<b><u>FY2014</u></b>	<b><u>FY2015</u></b>
Alumni	\$1,320,237	\$1,464,536
Other	1,028,167	884,922
Foundations	262,481	657,712
Corporation/Business	399,507	397,077
<b>Total</b>	<b><u><u>\$3,010,392</u></u></b>	<b><u><u>\$3,404,247</u></u></b>

<b><u>By Purpose</u></b>	<b><u>FY2014</u></b>	<b><u>FY2015</u></b>
Unrestricted	408,114	441,520
Academic Divisions	68,945	119,049
Public Service	127,958	243,000
Library	1,593	2,834
Physical Plant	8,858	56,873
Student Financial Aid	175,598	263,837
Other Restricted	260,937	574,827
Property	165,000	0
Endowment (restricted)	1,675,937	1,617,363
Endowment (unrestricted)	5,000	100
Research	300	500
Athletics	112,152	84,344
<b>Total</b>	<b><u><u>\$3,010,392</u></u></b>	<b><u><u>\$3,404,247</u></u></b>

Source: Advancement Division

## FACILITIES

### *Building Inventory – Assignable Square Footage*

<b>Buildings:</b>	<b>Admin</b>	<b>Classrooms, Labs, Galleries, Studios</b>	<b>Faculty Offices</b>	<b>Residence Halls</b>	<b>Other Aux. Buildings</b>	<b>Total</b>
Allan P. Kirby Center	1,800				1,200	3,000
Annette Evans House	1,018					1,018
Barre Hall*				7,553		7,553
Bedford Hall	1,200	2,487	848			4,535
Breiseth Hall	2,000	18,880	10,000			30,880
Capin Hall	971	450	3,756			5,177
Catlin Hall				5,097		5,097
Ceramics Studio		1,800				1,800
Chase Hall	3,973					3,973
Cohen Science Center		57,000	7,100			64,100
Conyngham Hall	1,898					1,898
Darte Center	437		661		9,000	10,098
Darte Hall	975	14,529	4,870			20,374
Doane Hall				3,353		3,353
Evans Hall				41,724	1,421	43,145
Facilities Building	14,000					14,000
Farley Library					45,282	45,282
Fortinsky Hall				11,718		11,718
Henry Student Center					48,000	48,000
Hollenback Hall	2,978					2,978
Kirby Hall	610	2,031	3,621			6,262
Marts Center	1,000	7,775			46,654	55,429
McCole House					8,300	8,300
Miner/Moat Hall	1,500					1,500
Munson Field House	400	800			38,000	39,200
O'Hop Hall					3,772	3,772
Parking Garage	4,500				104,832	109,332
Passan Hall	9,815					9,815
Pearsall Hall				6,600		6,600
Rifkin Hall				10,000		10,000
Ross Hall				2,792		2,792
Roth Center	12,340					12,340
Roth Residence Hall				18,152		18,152
Schiowitz Hall				11,356		11,356
Sidhu		8,627	5,028		67,345	81,000
Slocum Hall				6,107		6,107
Stark Learning Center	2,127	111,655	14,610			128,392
Sterling Hall				5,355		5,355
Sturdevant Hall				7,329		7,329

(Continued on following page)

**Building Inventory (continued)**

<b>Buildings:</b>	<b>Admin</b>	<b>Classrooms, Labs, Galleries, Studios</b>	<b>Faculty Offices</b>	<b>Residence Halls</b>	<b>Other Aux. Buildings</b>	<b>Total</b>
Sullivan Hall				5,852		5,852
University Towers				103,214	66,786	170,000
Waller North & South				18,771		18,771
Weckesser Hall & Annex	10,700		6,850		1,500	19,050
Weiss Hall				4,487		4,487
30 West River St.					5,802	5,802
32 W South St	3,072					3,072
186-188 South Franklin St	5,814					5,814
70-72 Wright St.					7,200	7,200
141 S Main St	17,242					17,242
245 South River St			2,500		6,875	9,375
247 South River St						N/A
258 South River St						N/A
280 South River St					17,280	17,280
321-323 South River St.*				5,400		5,400
324 South River St						N/A
325-327 South River St.*				5,965		5,965
339 South River St.*				3,164		3,164
<b>Total</b>	<b>100,370</b>	<b>226,034</b>	<b>59,844</b>	<b>283,989</b>	<b>479,249</b>	<b>1,149,486</b>

\* Building is offline

Source: Capital Projects & Planning



## ***Eugene S. Farley Library***

### **Fall 2015 Resources:**

#### **Print Collection**

Total Books	177,777
Book Additions	753
Total Bound Periodicals	9,703
Total Unbound Periodicals	3,234
Current Print Subscriptions	44
Microformats	19,499

#### **A-V Collection**

DVD's	1,132
VHS	536
CD Books	92

#### **Digital Resources**

Online Journals	50,040
Licensed Databases	54
E Books	7,870

#### **Expenditures (\$)**

Books & Monographs	31,039
Periodicals, subscriptions, electronic resources	366,202
A-V Resources	800

#### **Usage Statistics**

Total Circulations	12,160
Turnstile Count	262,325
Interlibrary Loans	2,726
Information Literacy Classes	189
Reference Questions	1,800

#### **Computers**

Desktops Available	55
Laptops Available	14
Laptop Loans	4,761
Instructional Desktops	4
Ipads	39

#### **Staff**

Professional Librarians	5
Technicians	10

Source: Library

## ***Computing Inventory***

### **Computers Available for Student Use**

Closed labs, classrooms, clubs 704

Open access labs 105

**Computers Available for Administrative & Faculty Use** 1,190

**Total** **1,999**

**Servers** 95

**Storage** 57.6 Terabytes

**Network Printers** 155

**Wireless Access Points** 560

Source: Information Technology Services

## **ACCREDITATIONS**

### **Regional:**

Middle States Association of Colleges and Schools

### **Professional:**

American Chemical Society

Commission on Collegiate Nursing Education

Engineering Accreditation Commission

ABET

Accreditation Council for Business Schools and Programs

Accreditation Council for Pharmaceutical Education

## **GLOSSARY**

### **Census Date**

The completion of six weeks of classes

### **First-Generation Student**

A student for whom neither parent graduated from a 4-year institution

### **First-Professional Program**

The First-Professional Program requires the completion of the academic requirements to begin practice in the profession; at least two years of college work prior to entering the program; and a total of at least six academic years of college work to complete the degree program, including prior required college work plus the length of the professional program itself.

### **First-Professional Student**

A student enrolled in the Pharmacy Program

### **First-Time Freshman**

An entering freshman who has never attended any college. Includes students enrolled in the fall term who attended for the first time in the prior summer term. Includes students who entered with advanced standing (college credits earned before graduation from high school).

### **FTE (Full-Time Equivalent)**

A full-time Undergraduate, Graduate, or First-Professional Student is equivalent to one FTE

Part-time Undergraduate and First-Professional FTE is calculated by dividing part-time registered credits by fifteen

Part-time Graduate FTE is calculated by dividing part-time registered credits by nine

### **Full-time Student**

Undergraduate and First-Professional - A student enrolled for twelve or more semester credits each term

Graduate - A student enrolled for nine or more semester credits

### **Graduate Student**

A student who holds a bachelor's or first-professional degree, or equivalent, and is taking courses at the post-baccalaureate level

### **Nonresident Alien**

A person who is not a citizen or national of the United States and who is in this country on a visa or temporary basis and does not have the right to remain indefinitely

### **Part-time Student**

Undergraduate and First-Professional - A student enrolled for less than twelve credits

Graduate - A student enrolled for less than nine credits

### **Tenure**

Status of a personnel position, or a person occupying a position or occupation, with respect to permanence of the position

### **Tenure Track**

Status of personnel positions that lead to consideration for tenure

### **Undergraduate Student**

A student enrolled in a four-year bachelor's degree program